

Product datasheet for **TA370318**

TIMM22 Rabbit Polyclonal Antibody

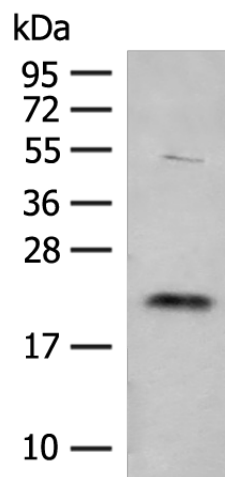
Product data:

Product Type:	Primary Antibodies
Applications:	WB
Recommended Dilution:	WB: 200-1000 WB positive control: HEPG2 cell lysate
Reactivity:	Human, Mouse, Rat
Host:	Rabbit
Isotype:	IgG
Clonality:	Polyclonal
Immunogen:	Fusion protein of human TIMM22
Formulation:	pH7.4 PBS, 0.05% NaN ₃ , 40% Glycerol
Concentration:	lot specific
Purification:	Antigen affinity purification
Conjugation:	Unconjugated
Storage:	Store at -20°C.
Stability:	1 year
Predicted Protein Size:	20 kDa
Gene Name:	translocase of inner mitochondrial membrane 22 homolog (yeast)
Database Link:	Entrez Gene 29928 Human Q9Y584
Background:	Multipass transmembrane proteins are brought into mitochondria and inserted into the mitochondrial inner membrane by way of the TIM22 complex. This complex has six subunits and is a twin-pore translocase. The protein encoded by this gene is a subunit of TIM22 and represents the voltage-activated and signal-gated channel.
Synonyms:	TEX4; TIM22



[View online »](#)

Product images:



Gel: 12%SDS-PAGE
Lysate: 40 μ g
Lane: HEPG2 cell lysate
Primary antibody: TA370318 (TIMM22 Antibody)
at dilution 1/250
Secondary antibody: Goat anti rabbit IgG at
1/8000 dilution
Exposure time: 30 seconds