

## Product datasheet for **TA370313S**

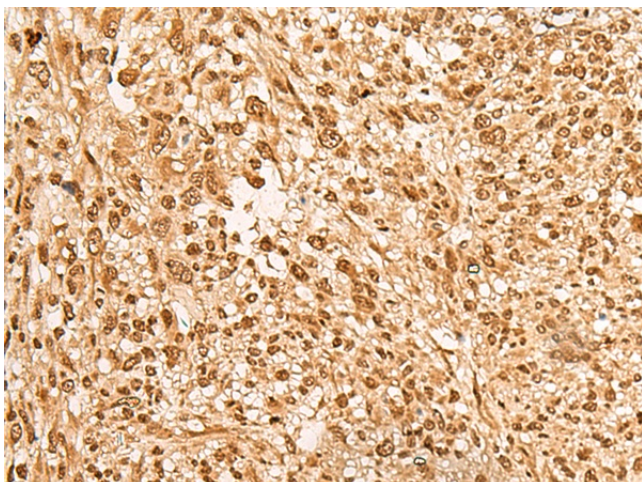
### JPT2 Rabbit Polyclonal Antibody

#### Product data:

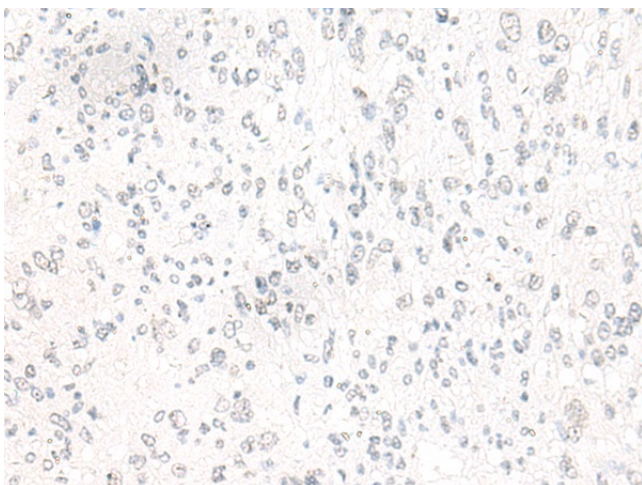
Product Type:	Primary Antibodies
Applications:	IHC
Recommended Dilution:	IHC: 50-300 Positive control: Human liver cancer Predicted cell location: Cytoplasm and Nucleus
Reactivity:	Human
Host:	Rabbit
Isotype:	IgG
Clonality:	Polyclonal
Immunogen:	Fusion protein of human JPT2
Formulation:	pH7.4 PBS, 0.05% NaN <sub>3</sub> , 40% Glycerol
Purification:	Antigen affinity purification
Conjugation:	Unconjugated
Storage:	Store at -20°C.
Stability:	1 year
Gene Name:	hematological and neurological expressed 1-like
Database Link:	<a href="#">Entrez Gene 90861 Human Q9H910</a>
Background:	The function of this protein remains unknown.
Synonyms:	C16orf34; FLJ13092; KIAA1426; L11



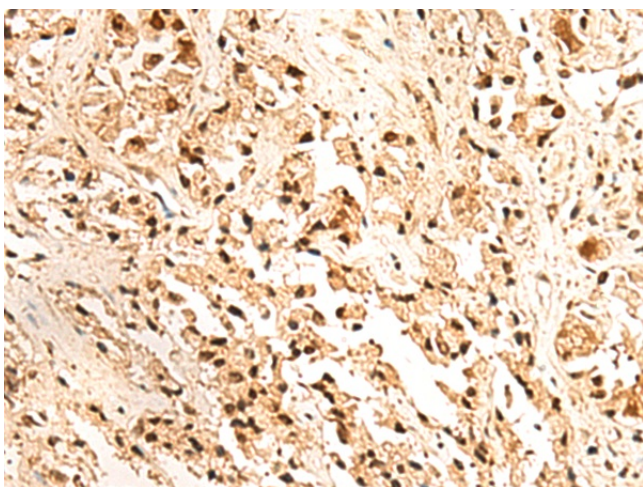
[View online »](#)

**Product images:**

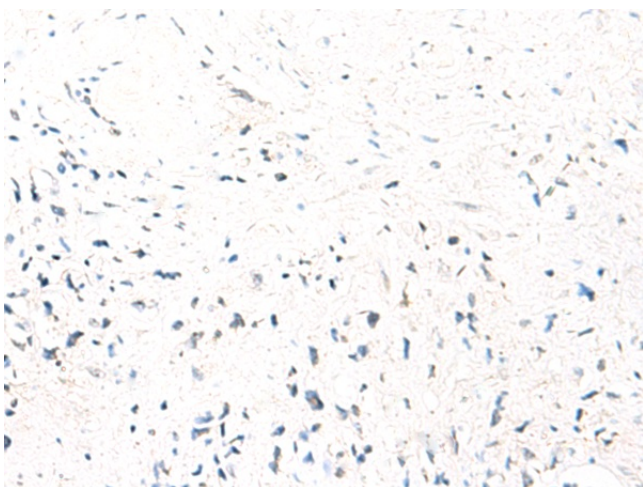
Immunohistochemistry of paraffin-embedded Human liver cancer tissue using [TA370313] (JPT2 Antibody) at dilution 1/65 (Original magnification: x200)



Immunohistochemistry of paraffin-embedded Human liver cancer tissue using [TA370313] (JPT2 Antibody) at dilution 1/65, treated with fusion protein. (Original magnification: x200)



Immunohistochemistry of paraffin-embedded Human prostate cancer tissue using [TA370313] (JPT2 Antibody) at dilution 1/65 (Original magnification: x200)



Immunohistochemistry of paraffin-embedded Human prostate cancer tissue using [TA370313] (JPT2 Antibody) at dilution 1/65, treated with fusion protein. (Original magnification: x200)