

Product datasheet for **TA370310S**

RPL17 Rabbit Polyclonal Antibody

Product data:

Product Type:	Primary Antibodies
Applications:	IHC, WB
Recommended Dilution:	WB: 1000-5000 WB positive control: 293T cell, Mouse brain tissue, Mouse testis tissue, HepG2 cell, Mouse liver tissue, A375 cell lysates IHC: 50-200 Positive control: Human tonsil Predicted cell location: Cytoplasm and Nucleus
Reactivity:	Human, Mouse, Rat
Host:	Rabbit
Isotype:	IgG
Clonality:	Polyclonal
Immunogen:	Fusion protein of human RPL17
Formulation:	pH7.4 PBS, 0.05% NaN ₃ , 40% Glycerol
Purification:	Antigen affinity purification
Conjugation:	Unconjugated
Storage:	Store at -20°C.
Stability:	1 year
Predicted Protein Size:	21 kDa
Gene Name:	ribosomal protein L17
Database Link:	Entrez Gene 6139 Human P18621



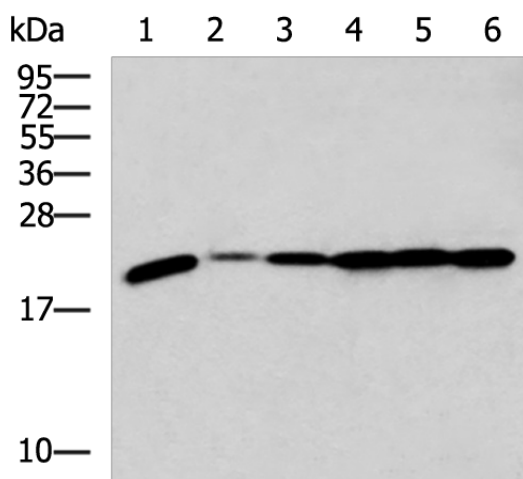
[View online »](#)

Background:

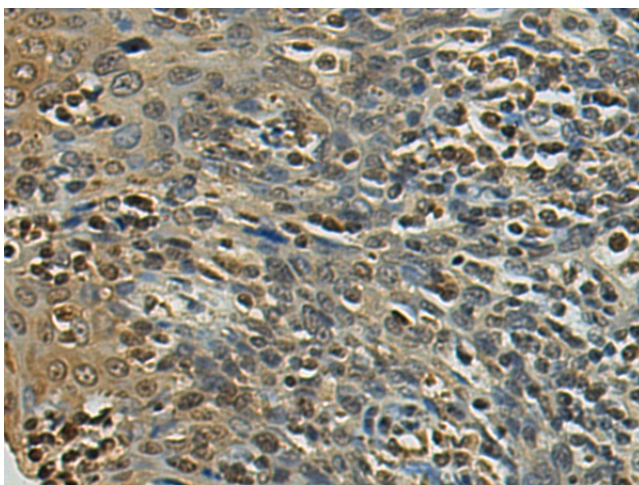
Ribosomes, the organelles that catalyze protein synthesis, consist of a small 40S subunit and a large 60S subunit. Together these subunits are composed of 4 RNA species and approximately 80 structurally distinct proteins. This gene encodes a ribosomal protein that is a component of the 60S subunit. The protein belongs to the L22P family of ribosomal proteins. It is located in the cytoplasm. This gene has been referred to as rpL23 because the encoded protein shares amino acid identity with ribosomal protein L23 from *Halobacterium marismortui*; however, its official symbol is RPL17. As is typical for genes encoding ribosomal proteins, there are multiple processed pseudogenes of this gene dispersed through the genome. Alternative splicing results in multiple transcript variants. Read-through transcription also exists between this gene and the neighboring downstream C18orf32 (chromosome 18 open reading frame 32) gene.

Synonyms:

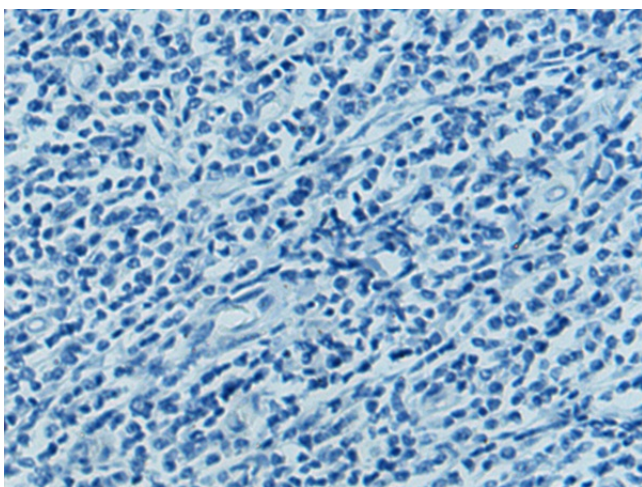
FLJ92089; MGC117162; PD-1; rpL23

Product images:


Gel: 12%SDS-PAGE
 Lysate: 40 µg
 Lane 1-6: 293T cell
 Mouse brain tissue
 Mouse testis tissue
 HepG2 cell
 Mouse liver tissue
 A375 cell lysates
 Primary antibody: [TA370310] (RPL17 Antibody) at dilution 1/800
 Secondary antibody: Goat anti rabbit IgG at 1/5000 dilution
 Exposure time: 3 seconds



Immunohistochemistry of paraffin-embedded Human tonsil tissue using [TA370310] (RPL17 Antibody) at dilution 1/110 (Original magnification: ×200)



Immunohistochemistry of paraffin-embedded Human tonsil tissue using [TA370310] (RPL17 Antibody) at dilution 1/110, treated with fusion protein. (Original magnification: $\times 200$)