

Product datasheet for **TA370298**

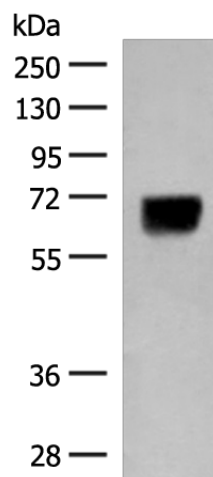
DGLUCY Rabbit Polyclonal Antibody

Product data:

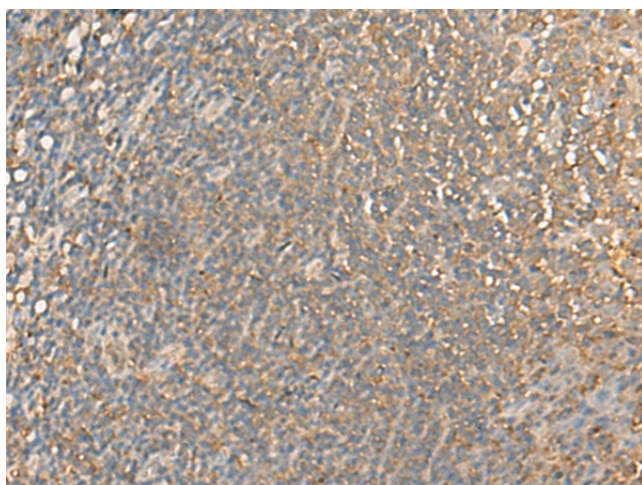
Product Type:	Primary Antibodies
Applications:	IHC, WB
Recommended Dilution:	WB: 500-2000 WB positive control: Human thyroid tissue lysate IHC: 25-100 Positive control: Human tonsil Predicted cell location: Cytoplasm and Cell membrane
Reactivity:	Human
Host:	Rabbit
Isotype:	IgG
Clonality:	Polyclonal
Immunogen:	Fusion protein of human DGLUCY
Formulation:	pH7.4 PBS, 0.05% NaN ₃ , 40% Glycerol
Concentration:	lot specific
Purification:	Antigen affinity purification
Conjugation:	Unconjugated
Storage:	Store at -20°C.
Stability:	1 year
Predicted Protein Size:	66 kDa
Gene Name:	chromosome 14 open reading frame 159
Database Link:	Entrez Gene 80017 Human Q7Z3D6
Background:	D-glutamate cyclase that converts D-glutamate to 5-oxo-D-proline.
Synonyms:	C14orf160; DKFZp686I02128; FLJ20950; FLJ39943; FLJ39975



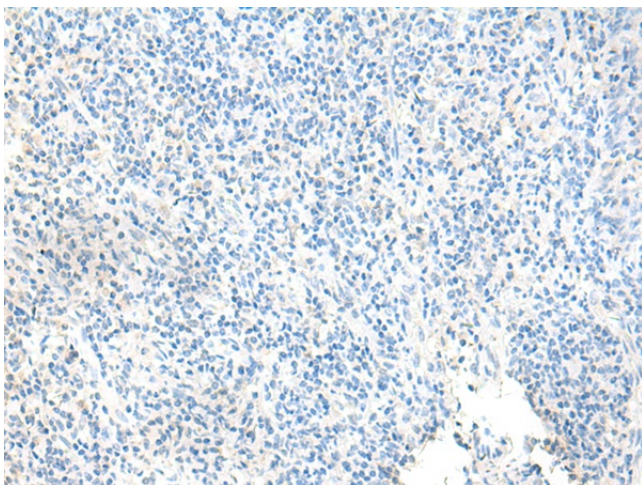
[View online »](#)

Product images:

Gel: 8%SDS-PAGE
Lysate: 40 μ g
Lane: Human thyroid tissue lysate
Primary antibody: TA370298 (DGLUCY Antibody)
at dilution 1/250
Secondary antibody: Goat anti rabbit IgG at
1/8000 dilution
Exposure time: 20 seconds



Immunohistochemistry of paraffin-embedded
Human tonsil tissue using TA370298 (DGLUCY
Antibody) at dilution 1/40 (Original magnification:
 \times 200)



Immunohistochemistry of paraffin-embedded Human tonsil tissue using TA370298 (DGLUCY Antibody) at dilution 1/40, treated with fusion protein. (Original magnification: $\times 200$)