

Product datasheet for **TA370292**

Mago nashi homolog 2 (MAGOHB) Rabbit Polyclonal Antibody

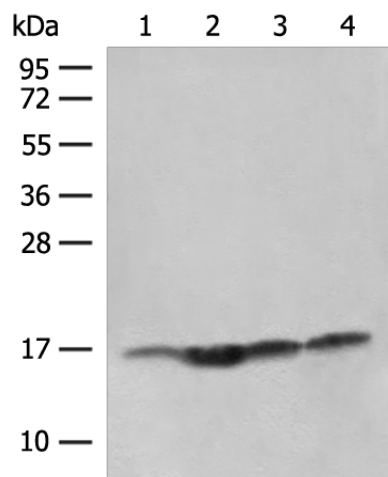
Product data:

Product Type:	Primary Antibodies
Applications:	IHC, WB
Recommended Dilution:	WB: 500-2000 WB positive control: Human prostate tissue, Jurkat cell, Hela and HL-60 cell lysates IHC: 50-300 Positive control: Human esophagus cancer Predicted cell location: Nucleus and Cytoplasm
Reactivity:	Human, Mouse
Host:	Rabbit
Isotype:	IgG
Clonality:	Polyclonal
Immunogen:	Fusion protein of human MAGOHB
Formulation:	pH7.4 PBS, 0.05% NaN ₃ , 40% Glycerol
Concentration:	lot specific
Purification:	Antigen affinity purification
Conjugation:	Unconjugated
Storage:	Store at -20°C.
Stability:	1 year
Predicted Protein Size:	17 kDa
Gene Name:	mago homolog B, exon junction complex core component
Database Link:	Entrez Gene 55110 Human Q96A72
Background:	Involved in mRNA splicing and in the nonsense-mediated decay (NMD) pathway.
Synonyms:	FLJ10292; mago; magoh; MAGOH2; MGN2

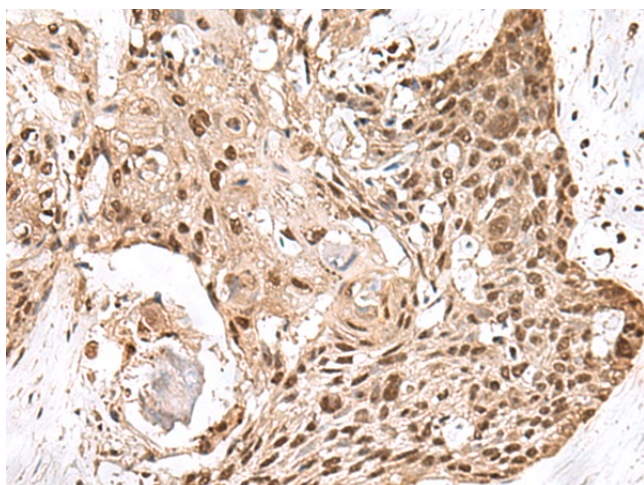


[View online »](#)

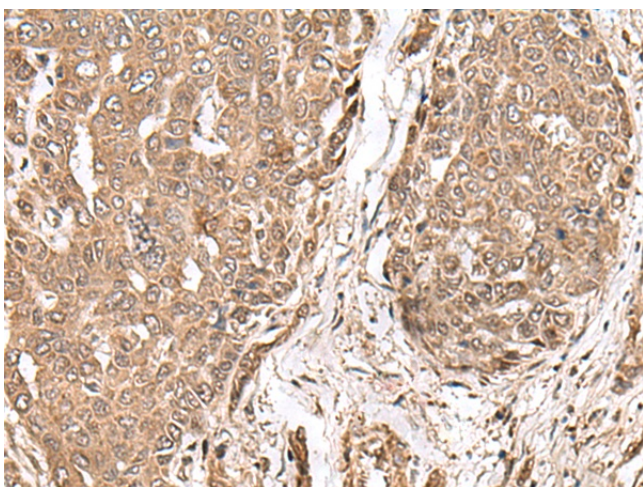
Product images:



Gel: 12%SDS-PAGE
Lysate: 40 μ g
Lane 1-4: Human prostate tissue
Jurkat cell
Hela and HL-60 cell lysates
Primary antibody: TA370292 (MAGOHB Antibody)
at dilution 1/400
Secondary antibody: Goat anti rabbit IgG at
1/8000 dilution
Exposure time: 15 seconds



Immunohistochemistry of paraffin-embedded
Human esophagus cancer tissue using TA370292
(MAGOHB Antibody) at dilution 1/70. (Original
magnification: \times 200)



Immunohistochemistry of paraffin-embedded Human liver cancer tissue using TA370292 (MAGOHB Antibody) at dilution 1/70. (Original magnification: x200)