

Product datasheet for **TA370280**

SH3BGRL Rabbit Polyclonal Antibody

Product data:

Product Type:	Primary Antibodies
Applications:	IHC
Recommended Dilution:	IHC: 50-100 Positive control: Human gastric cancer Predicted cell location: Cytoplasm
Reactivity:	Human, Mouse
Host:	Rabbit
Isotype:	IgG
Clonality:	Polyclonal
Immunogen:	Fusion protein of human SH3BGRL
Formulation:	pH7.4 PBS, 0.05% NaN ₃ , 40% Glycerol
Concentration:	lot specific
Purification:	Antigen affinity purification
Conjugation:	Unconjugated
Storage:	Store at -20°C.
Stability:	1 year
Gene Name:	SH3 domain binding glutamate rich protein like
Database Link:	Entrez Gene 6451 Human O75368

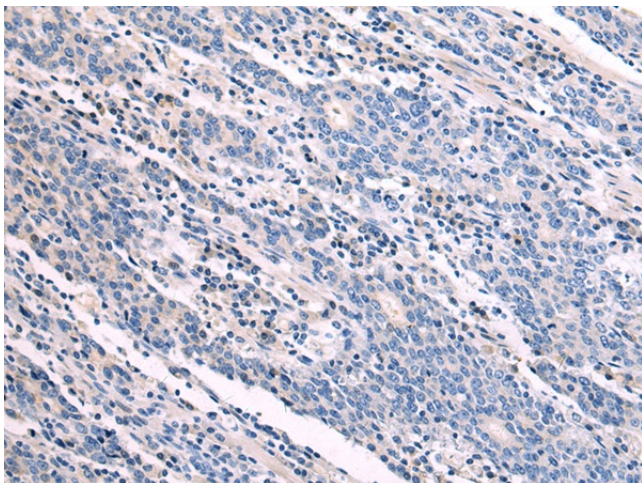
Background: SH3BGRL (SH3 domain binding glutamic acid-rich protein like), also known as SH3BGR, is a 114 amino acid protein that is ubiquitously expressed and is encoded by a gene which maps to the X chromosome of both human and mouse. Chromosome X, one of the two human sex chromosomes, contains nearly 153 million base pairs and encodes over 1,000 genes. In conjunction with chromosome Y, chromosome X is responsible for sex determination, as an X and a Y chromosome lead to normal male development, while two copies of an X chromosome lead to normal female development. There are a number of conditions related to an abnormal number and combination of sex chromosomes, some of which include Turner's syndrome, color blindness, hemophilia and Duchenne muscular dystrophy.



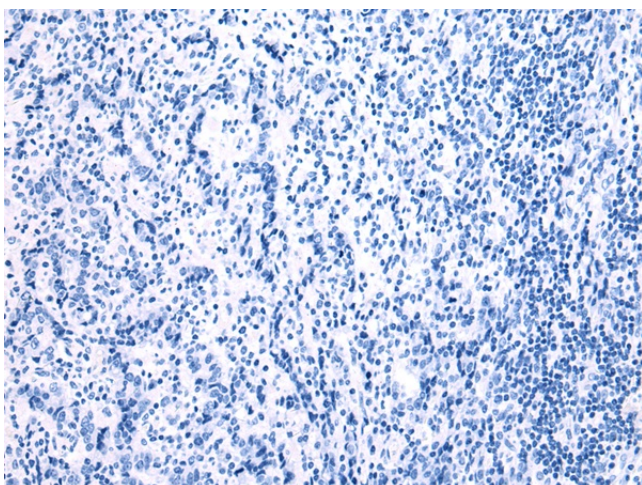
[View online »](#)

Synonyms: MGC117402; SH3BGR

Product images:



Immunohistochemistry of paraffin-embedded Human gastric cancer tissue using TA370280 (SH3BGRL Antibody) at dilution 1/90 (Original magnification: $\times 200$)



Immunohistochemistry of paraffin-embedded Human gastric cancer tissue using TA370280 (SH3BGRL Antibody) at dilution 1/90, treated with fusion protein. (Original magnification: $\times 200$)