

Product datasheet for **TA370275**

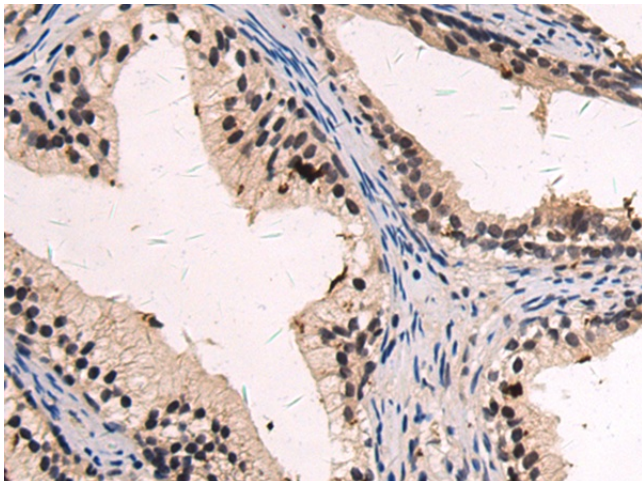
DPY30 Rabbit Polyclonal Antibody

Product data:

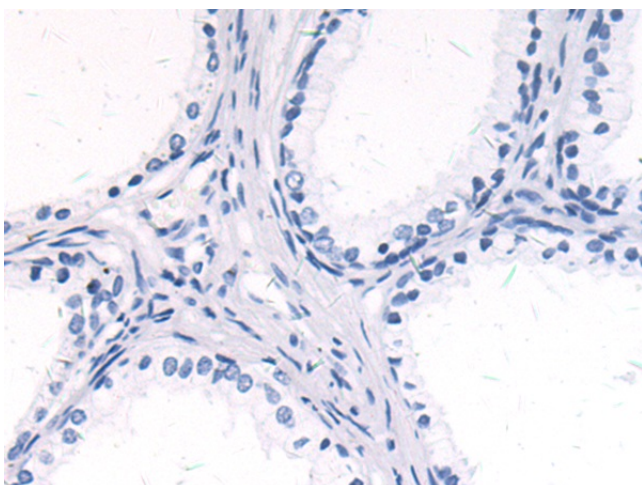
Product Type:	Primary Antibodies
Applications:	IHC
Recommended Dilution:	IHC: 50-100 Positive control: Human prostate cancer Predicted cell location: Nucleus
Reactivity:	Human, Mouse, Rat
Host:	Rabbit
Isotype:	IgG
Clonality:	Polyclonal
Immunogen:	Fusion protein of human DPY30
Formulation:	pH7.4 PBS, 0.05% NaN ₃ , 40% Glycerol
Concentration:	lot specific
Purification:	Antigen affinity purification
Conjugation:	Unconjugated
Storage:	Store at -20°C.
Stability:	1 year
Gene Name:	dpy-30, histone methyltransferase complex regulatory subunit
Database Link:	Entrez Gene 84661 Human Q9C005
Background:	This gene encodes an integral core subunit of the SET1/MLL family of H3K4 methyltransferases. The encoded protein directly controls cell cycle regulators and plays an important role in the proliferation and differentiation of human hematopoietic progenitor cells.
Synonyms:	HDPY-30; Saf19



[View online »](#)

Product images:

Immunohistochemistry of paraffin-embedded Human prostate cancer tissue using TA370275 (DPY30 Antibody) at dilution 1/70 (Original magnification: $\times 200$)



Immunohistochemistry of paraffin-embedded Human prostate cancer tissue using TA370275 (DPY30 Antibody) at dilution 1/70, treated with fusion protein. (Original magnification: $\times 200$)