

Product datasheet for **TA370274**

PLGLB1 Rabbit Polyclonal Antibody

Product data:

Product Type:	Primary Antibodies
Applications:	IHC
Recommended Dilution:	IHC: 50-300 Positive control: Human liver cancer Predicted cell location: Secreted
Reactivity:	Human
Host:	Rabbit
Isotype:	IgG
Clonality:	Polyclonal
Immunogen:	Fusion protein of human PLGLB2
Formulation:	pH7.4 PBS, 0.05% NaN ₃ , 40% Glycerol
Concentration:	lot specific
Purification:	Antigen affinity purification
Conjugation:	Unconjugated
Storage:	Store at -20°C.
Stability:	1 year
Gene Name:	plasminogen-like B1
Database Link:	Entrez Gene 5343 Human Q02325



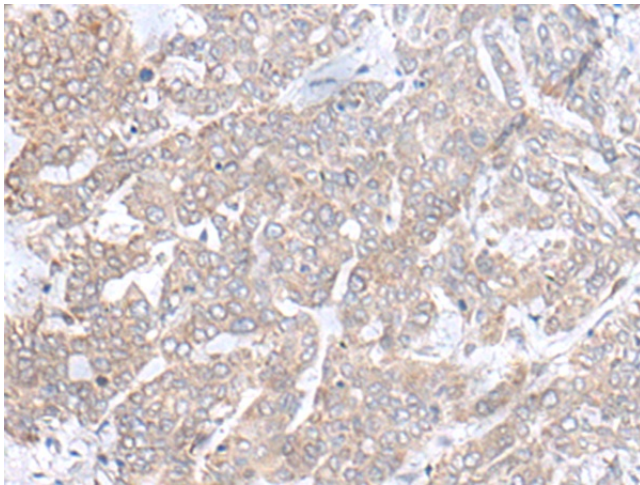
[View online »](#)

Background:

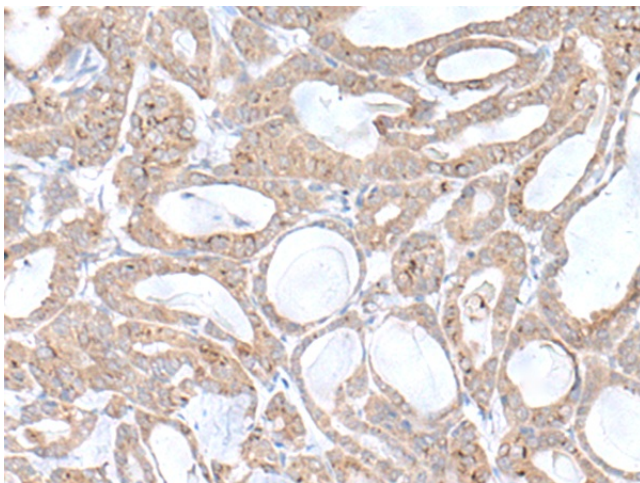
Cleavage of the serine proteinase plasminogen to form plasmin is the central event in the dissolution of blood clots by the fibrinolytic system. Within the fibrinolytic cascade, the serine proteinases urokinase-type plasminogen activator (uPA) and tissue-type plasminogen activator (tPA) activate the proenzyme plasminogen by cleaving plasminogen to form the fibrinolytically active enzyme plasmin. PLGLB2 (plasminogen-like B2), also known as PLGP1, is a 96 amino acid protein that resembles the N-terminal plasminogen activation peptide, which is released from plasminogen during conversion to plasmin. PLGLB2 may bind to lysine binding sites present in the kringle structures of plasminogen, an event that interferes with the binding of fibrin or α -2 antiplasmin to plasminogen and may result in the localization of activity at sites necessary for extracellular matrix destruction.

Synonyms:

OTTHUMP00000203509; OTTHUMP00000203511; plasminogen-like; PLGL; PLGP1; PRGB; PRP-B

Product images:

Immunohistochemistry of paraffin-embedded Human liver cancer tissue using TA370274 (PLGLB2 Antibody) at dilution 1/65. (Original magnification: $\times 200$)



Immunohistochemistry of paraffin-embedded Human thyroid cancer tissue using TA370274 (PLGLB2 Antibody) at dilution 1/65. (Original magnification: $\times 200$)