

Product datasheet for **TA370269**

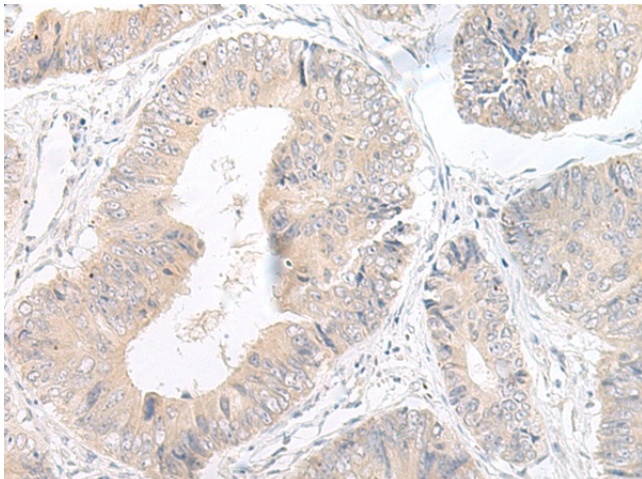
LYRM2 Rabbit Polyclonal Antibody

Product data:

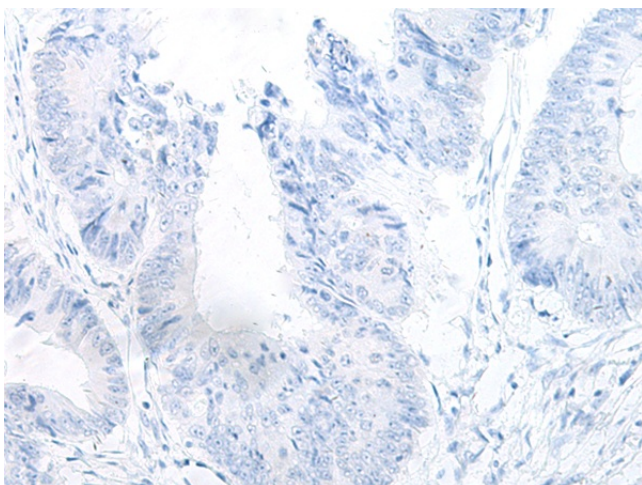
| | |
|-----------------------|--|
| Product Type: | Primary Antibodies |
| Applications: | IHC |
| Recommended Dilution: | IHC: 50-300 Positive control: Human colorectal cancer Predicted cell location: Cytoplasm |
| Reactivity: | Human, Mouse, Rat |
| Host: | Rabbit |
| Isotype: | IgG |
| Clonality: | Polyclonal |
| Immunogen: | Fusion protein of human LYRM2 |
| Formulation: | pH7.4 PBS, 0.05% NaN ₃ , 40% Glycerol |
| Concentration: | lot specific |
| Purification: | Antigen affinity purification |
| Conjugation: | Unconjugated |
| Storage: | Store at -20°C. |
| Stability: | 1 year |
| Gene Name: | LYR motif containing 2 |
| Database Link: | Entrez Gene 57226 Human Q9NU23 |
| Background: | The Lyr motif found in the LYR-motif containing protein family is similar to that found in the <i>Saccharomyces cerevisiae</i> protein ISD11, an iron-sulfur protein in the mitochondria that is thought to play a role in iron homeostasis. No known function has been assigned to LYRM2, although LYRM1 is thought to be involved in preadipocyte progression and LYRM3 has been suggested to be a candidate gene for the branchio-oto-renal (BOR) syndrome. |
| Synonyms: | DJ12208.2; FLJ18193; FLJ18317; FLJ21130; MGC104253 |



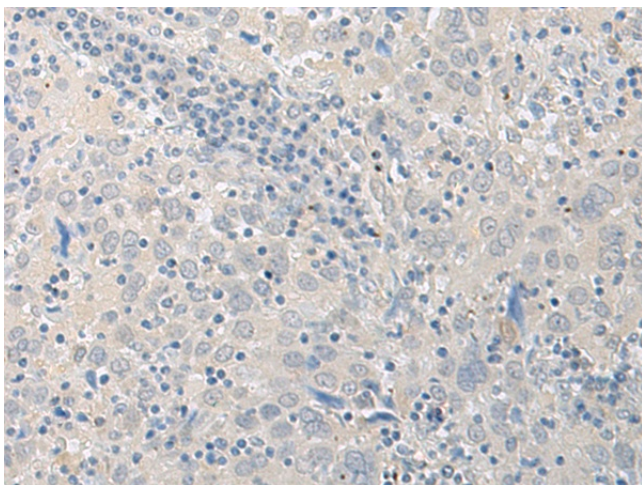
[View online »](#)

Product images:

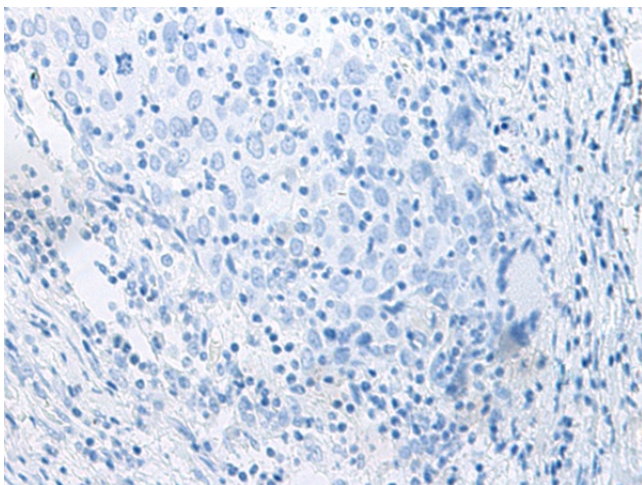
Immunohistochemistry of paraffin-embedded Human colorectal cancer tissue using TA370269 (LYRM2 Antibody) at dilution 1/50 (Original magnification: $\times 200$)



Immunohistochemistry of paraffin-embedded Human colorectal cancer tissue using TA370269 (LYRM2 Antibody) at dilution 1/50, treated with fusion protein. (Original magnification: $\times 200$)



Immunohistochemistry of paraffin-embedded Human cervical cancer tissue using TA370269 (LYRM2 Antibody) at dilution 1/50 (Original magnification: $\times 200$)



Immunohistochemistry of paraffin-embedded Human cervical cancer tissue using TA370269 (LYRM2 Antibody) at dilution 1/50, treated with fusion protein. (Original magnification: $\times 200$)