

## Product datasheet for **TA370268S**

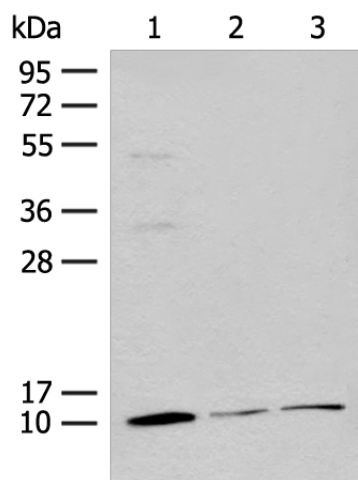
### RPS27L Rabbit Polyclonal Antibody

#### Product data:

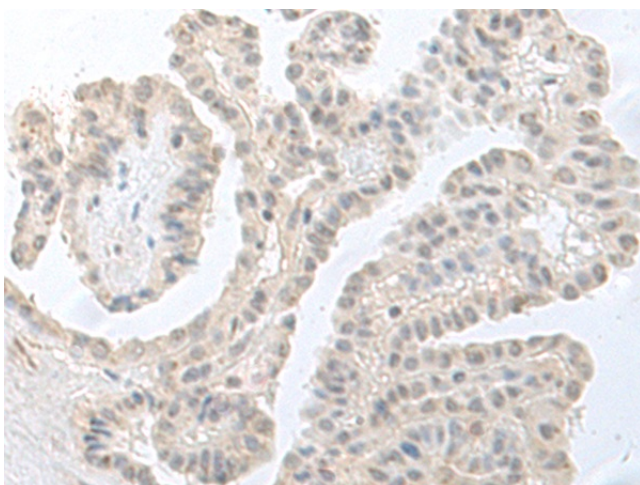
Product Type:	Primary Antibodies
Applications:	IHC, WB
Recommended Dilution:	WB: 500-2000 WB positive control: Mouse adrenal gland tissue, Rat lung tissue, 231 cell lysates IHC: 40-200 Positive control: Human thyroid cancer Predicted cell location: Nucleus
Reactivity:	Human, Mouse, Rat
Host:	Rabbit
Isotype:	IgG
Clonality:	Polyclonal
Immunogen:	Fusion protein of human RPS27L
Formulation:	pH7.4 PBS, 0.05% NaN <sub>3</sub> , 40% Glycerol
Purification:	Antigen affinity purification
Conjugation:	Unconjugated
Storage:	Store at -20°C.
Stability:	1 year
Predicted Protein Size:	9 kDa
Gene Name:	ribosomal protein S27 like
Database Link:	<a href="#">Entrez Gene 51065 Human Q71UM5</a>
Background:	This gene encodes a protein sharing 96% amino acid similarity with ribosomal protein S27, which suggests the encoded protein may be a component of the 40S ribosomal subunit.
Synonyms:	RPS27L



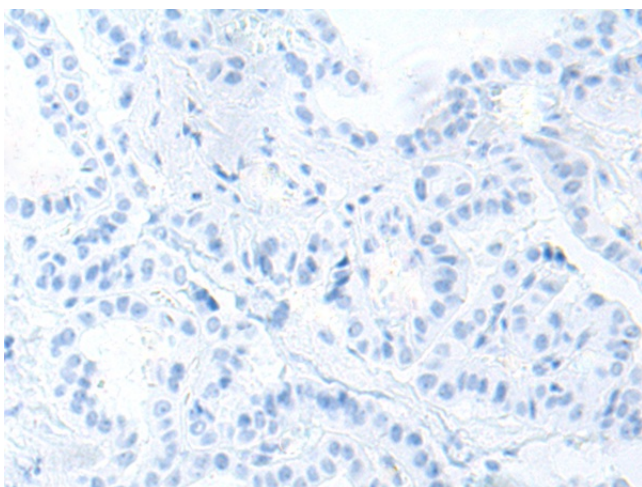
[View online »](#)

**Product images:**


Gel: 12%SDS-PAGE  
 Lysate: 40 µg  
 Lane 1-3: Mouse adrenal gland tissue  
 Rat lung tissue  
 231 cell lysates  
 Primary antibody: [TA370268] (RPS27L Antibody)  
 at dilution 1/400  
 Secondary antibody: Goat anti rabbit IgG at  
 1/8000 dilution  
 Exposure time: 10 seconds



Immunohistochemistry of paraffin-embedded  
 Human thyroid cancer tissue using [TA370268]  
 (RPS27L Antibody) at dilution 1/55 (Original  
 magnification: ×200)



Immunohistochemistry of paraffin-embedded Human thyroid cancer tissue using [TA370268] (RPS27L Antibody) at dilution 1/55, treated with fusion protein. (Original magnification: ×200)