

## Product datasheet for **TA370256S**

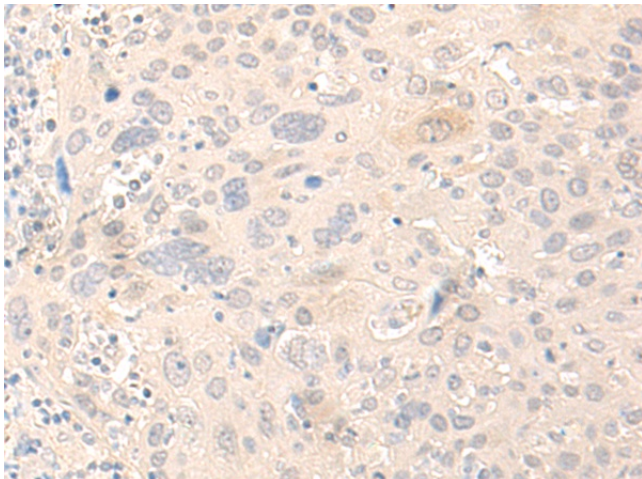
### **NLRX1 Rabbit Polyclonal Antibody**

#### **Product data:**

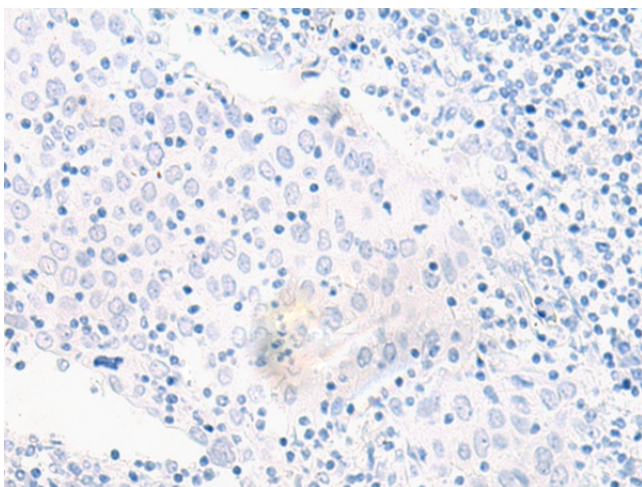
Product Type:	Primary Antibodies
Applications:	IHC
Recommended Dilution:	IHC: 30-150 Positive control: Human cervical cancer Predicted cell location: Cytoplasm
Reactivity:	Human
Host:	Rabbit
Isotype:	IgG
Clonality:	Polyclonal
Immunogen:	Fusion protein of human NLRX1
Formulation:	pH7.4 PBS, 0.05% NaN <sub>3</sub> , 40% Glycerol
Purification:	Antigen affinity purification
Conjugation:	Unconjugated
Storage:	Store at -20°C.
Stability:	1 year
Gene Name:	NLR family member X1
Database Link:	<a href="#">Entrez Gene 79671 Human Q86UT6</a>
Background:	The protein encoded by this gene is a member of the NLR family and localizes to the outer mitochondrial membrane. The encoded protein is a regulator of mitochondrial antiviral responses. Three transcript variants encoding the same protein have been found for this gene.
Synonyms:	CLR11.3; DLNB26; FLJ21478; MGC21025; MGC131937; NOD5; NOD9; NOD26; OTTHUMP00000205768; OTTHUMP00000205769



[View online »](#)

**Product images:**

Immunohistochemistry of paraffin-embedded Human cervical cancer tissue using [TA370256] (NLRX1 Antibody) at dilution 1/30 (Original magnification: ×200)



Immunohistochemistry of paraffin-embedded Human cervical cancer tissue using [TA370256] (NLRX1 Antibody) at dilution 1/30, treated with fusion protein. (Original magnification: ×200)