

## Product datasheet for **TA370252**

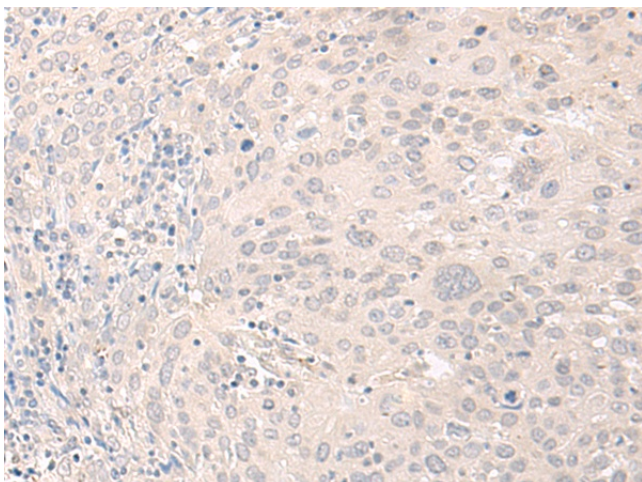
### FOXRED2 Rabbit Polyclonal Antibody

#### Product data:

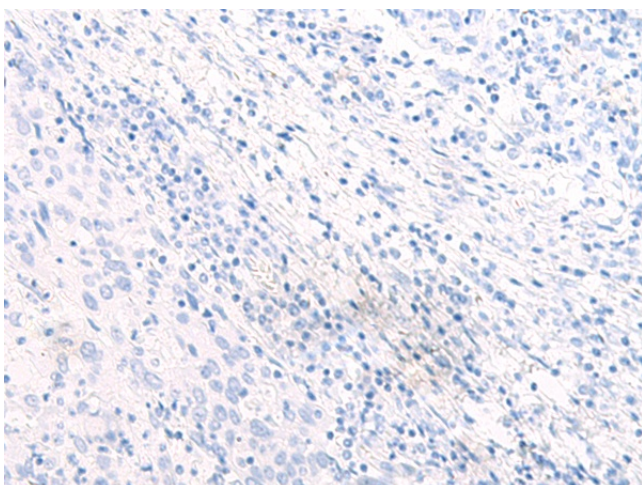
Product Type:	Primary Antibodies
Applications:	IHC
Recommended Dilution:	IHC: 40-200 Positive control: Human cervical cancer Predicted cell location: Cytoplasm
Reactivity:	Human
Host:	Rabbit
Isotype:	IgG
Clonality:	Polyclonal
Immunogen:	Fusion protein of human FOXRED2
Formulation:	pH7.4 PBS, 0.05% NaN <sub>3</sub> , 40% Glycerol
Concentration:	lot specific
Purification:	Antigen affinity purification
Conjugation:	Unconjugated
Storage:	Store at -20°C.
Stability:	1 year
Gene Name:	FAD dependent oxidoreductase domain containing 2
Database Link:	<a href="#">Entrez Gene 80020 Human</a> <a href="#">Q8IWF2</a>
Background:	Probable flavoprotein which may function in endoplasmic reticulum associated degradation (ERAD). May bind non-native proteins in the endoplasmic reticulum and target them to the ubiquitination machinery for subsequent degradation.
Synonyms:	ERFAD; FLJ23322; FLJ33734



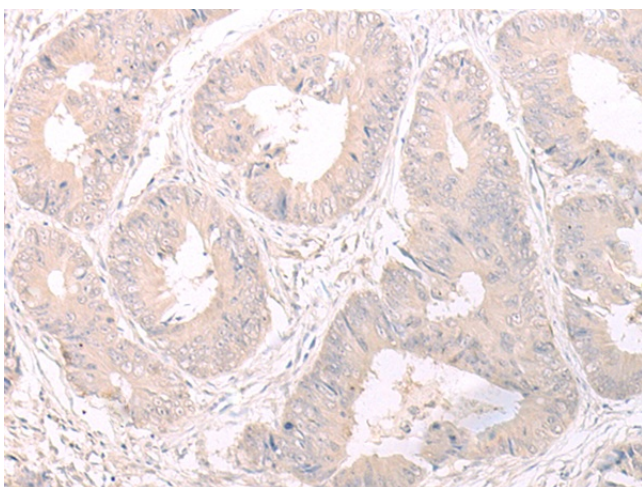
[View online »](#)

**Product images:**


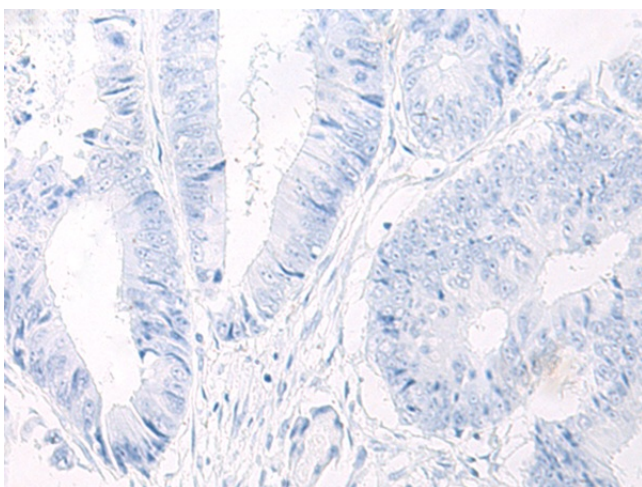
Immunohistochemistry of paraffin-embedded Human cervical cancer tissue using TA370252 (FOXRED2 Antibody) at dilution 1/35 (Original magnification: ×200)



Immunohistochemistry of paraffin-embedded Human cervical cancer tissue using TA370252 (FOXRED2 Antibody) at dilution 1/35, treated with fusion protein. (Original magnification: ×200)



Immunohistochemistry of paraffin-embedded Human colorectal cancer tissue using TA370252 (FOXRED2 Antibody) at dilution 1/35 (Original magnification: ×200)



Immunohistochemistry of paraffin-embedded Human colorectal cancer tissue using TA370252 (FOXRED2 Antibody) at dilution 1/35, treated with fusion protein. (Original magnification: ×200)