

Product datasheet for **TA370251S**

Transcription factor 25 (TCF25) Rabbit Polyclonal Antibody

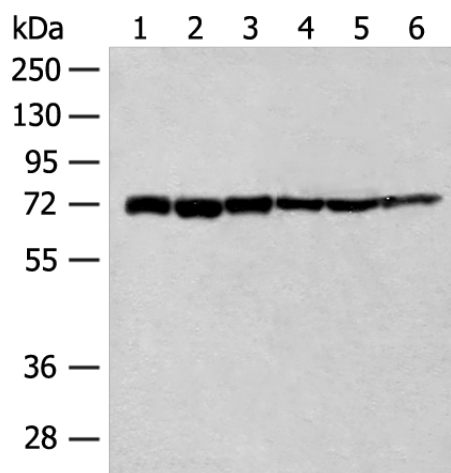
Product data:

| | |
|-------------------------|--|
| Product Type: | Primary Antibodies |
| Applications: | IHC, WB |
| Recommended Dilution: | WB: 500-2000 WB positive control: K562 cell, 293T cell, Human fetal brain tissue, Jurkat cell, Hela cell, Mouse heart tissue lysates IHC: 30-150 Positive control: Human esophagus cancer Predicted cell location: Nucleus |
| Reactivity: | Human, Mouse |
| Host: | Rabbit |
| Isotype: | IgG |
| Clonality: | Polyclonal |
| Immunogen: | Fusion protein of human TCF25 |
| Formulation: | pH7.4 PBS, 0.05% NaN ₃ , 40% Glycerol |
| Purification: | Antigen affinity purification |
| Conjugation: | Unconjugated |
| Storage: | Store at -20°C. |
| Stability: | 1 year |
| Predicted Protein Size: | 77 kDa |
| Gene Name: | transcription factor 25 |
| Database Link: | Entrez Gene 22980 Human Q9BQ70 |
| Background: | May play a role in cell death control. Acts as a transcriptional repressor. Has been shown to repress transcription of SRF in vitro and so may play a role in heart development. |
| Synonyms: | FKSG26; hKIAA1049; Hulp1; KIAA1049; NULP1; PRO2620 |

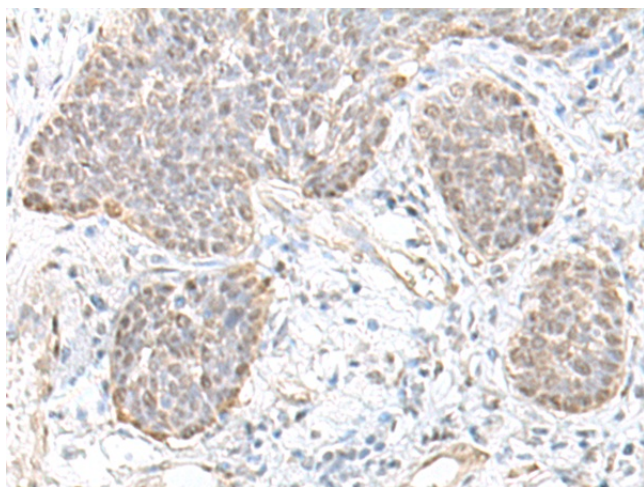


[View online »](#)

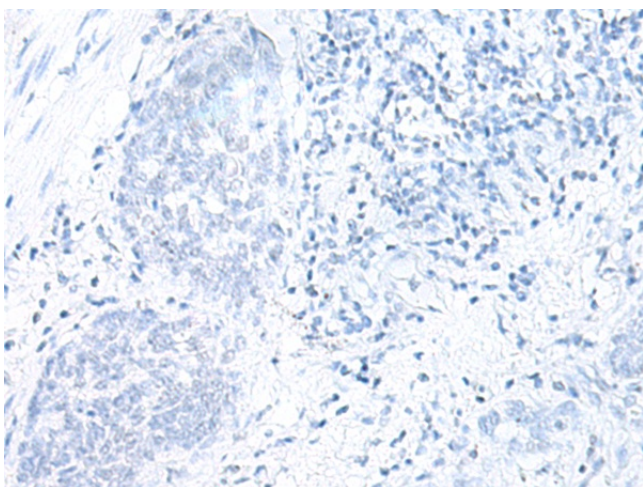
Product images:



Gel: 8%SDS-PAGE
Lysate: 40 μ g
Lane 1-6: K562 cell
293T cell
Human fetal brain tissue
Jurkat cell
Hela cell
Mouse heart tissue lysates
Primary antibody: [TA370251] (TCF25 Antibody) at dilution 1/250
Secondary antibody: Goat anti rabbit IgG at 1/8000 dilution
Exposure time: 5 seconds



Immunohistochemistry of paraffin-embedded Human esophagus cancer tissue using [TA370251] (TCF25 Antibody) at dilution 1/35 (Original magnification: $\times 200$)



Immunohistochemistry of paraffin-embedded Human esophagus cancer tissue using [TA370251] (TCF25 Antibody) at dilution 1/35, treated with fusion protein. (Original magnification: $\times 200$)