

## Product datasheet for **TA370246**

### CSRP2BP (KAT14) Rabbit Polyclonal Antibody

#### Product data:

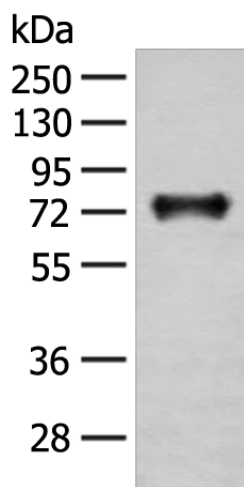
Product Type:	Primary Antibodies
Applications:	IHC, WB
Recommended Dilution:	WB: 500-2000 WB positive control: Mouse brain tissue lysate IHC: 30-150 Positive control: Human ovarian cancer Predicted cell location: Nucleus
Reactivity:	Human, Mouse
Host:	Rabbit
Isotype:	IgG
Clonality:	Polyclonal
Immunogen:	Fusion protein of human KAT14
Formulation:	pH7.4 PBS, 0.05% NaN <sub>3</sub> , 40% Glycerol
Concentration:	lot specific
Purification:	Antigen affinity purification
Conjugation:	Unconjugated
Storage:	Store at -20°C.
Stability:	1 year
Predicted Protein Size:	89 kDa
Gene Name:	lysine acetyltransferase 14
Database Link:	<a href="#">Entrez Gene 57325 Human Q9H8E8</a>



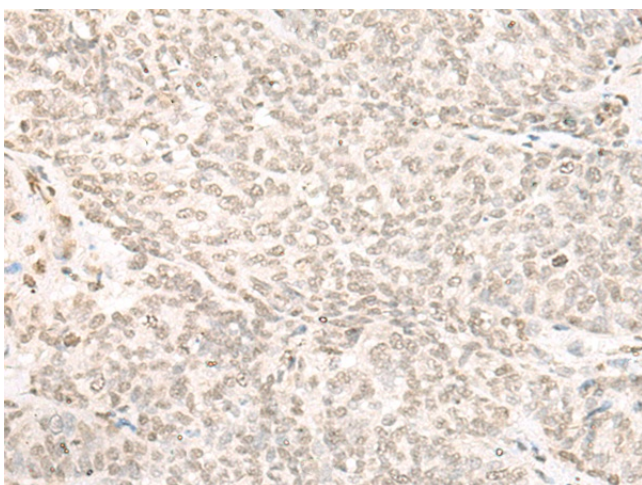
[View online »](#)

**Background:**

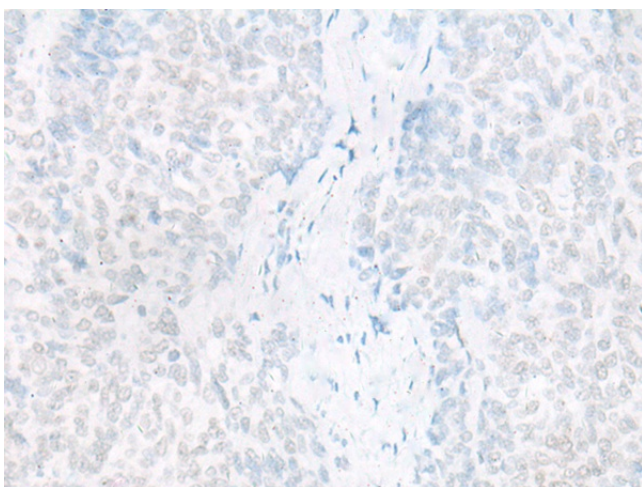
CSRP2 is a protein containing two LIM domains, which are double zinc finger motifs found in proteins of diverse function. CSRP2 and some related proteins are thought to act as protein adapters, bridging two or more proteins to form a larger protein complex. The protein encoded by this gene binds to one of the LIM domains of CSRP2 and contains an acetyltransferase domain. Although the encoded protein has been detected in the cytoplasm, it is predominantly a nuclear protein. Alternatively spliced transcript variants have been described.

**Product images:**

Gel: 8%SDS-PAGE  
Lysate: 40  $\mu$ g  
Lane: Mouse brain tissue lysate  
Primary antibody: TA370246 (KAT14 Antibody) at dilution 1/300  
Secondary antibody: Goat anti rabbit IgG at 1/8000 dilution  
Exposure time: 3 minutes



Immunohistochemistry of paraffin-embedded Human ovarian cancer tissue using TA370246 (KAT14 Antibody) at dilution 1/20 (Original magnification:  $\times$ 200)



Immunohistochemistry of paraffin-embedded Human ovarian cancer tissue using TA370246 (KAT14 Antibody) at dilution 1/20, treated with fusion protein. (Original magnification: ×200)