

Product datasheet for **TA370245**

HSPA2 Rabbit Polyclonal Antibody

Product data:

Product Type:	Primary Antibodies
Applications:	IHC, WB
Recommended Dilution:	WB: 500-2000 WB positive control: 231 cell, Hela cell, Jurkat cell, A549 cell, NIH/3T3 cell, Human cerebrum tissue, Mouse brain tissue lysates IHC: 30-150 Positive control: Human thyroid cancer Predicted cell location: Cytoplasm and Nucleus
Reactivity:	Human, Mouse, Rat
Host:	Rabbit
Isotype:	IgG
Clonality:	Polyclonal
Immunogen:	Fusion protein of human HSPA2
Formulation:	pH7.4 PBS, 0.05% NaN ₃ , 40% Glycerol
Concentration:	lot specific
Purification:	Antigen affinity purification
Conjugation:	Unconjugated
Storage:	Store at -20°C.
Stability:	1 year
Predicted Protein Size:	70 kDa
Gene Name:	heat shock protein family A (Hsp70) member 2
Database Link:	Entrez Gene 3306 Human P54652



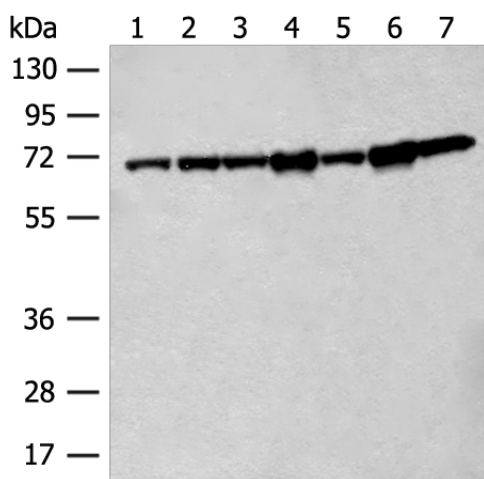
[View online »](#)

Background:

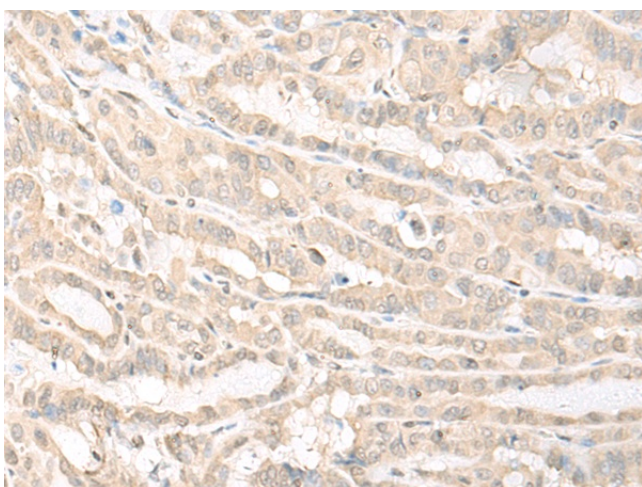
In cooperation with other chaperones, Hsp70s stabilize preexistent proteins against aggregation and mediate the folding of newly translated polypeptides in the cytosol as well as within organelles. These chaperones participate in all these processes through their ability to recognize nonnative conformations of other proteins. They bind extended peptide segments with a net hydrophobic character exposed by polypeptides during translation and membrane translocation, or following stress-induced damage. Plays a role in spermatogenesis. In association with SHCBP1L may participate in the maintenance of spindle integrity during meiosis in male germ cells.

Synonyms:

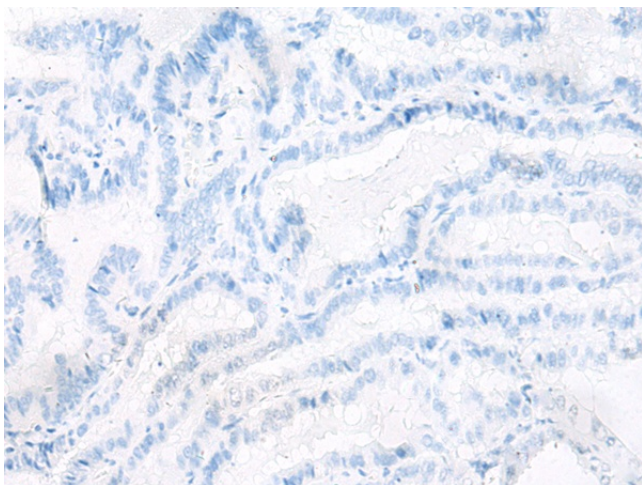
HSP70-2; HSP70-3; OTTHUMP00000180664

Product images:


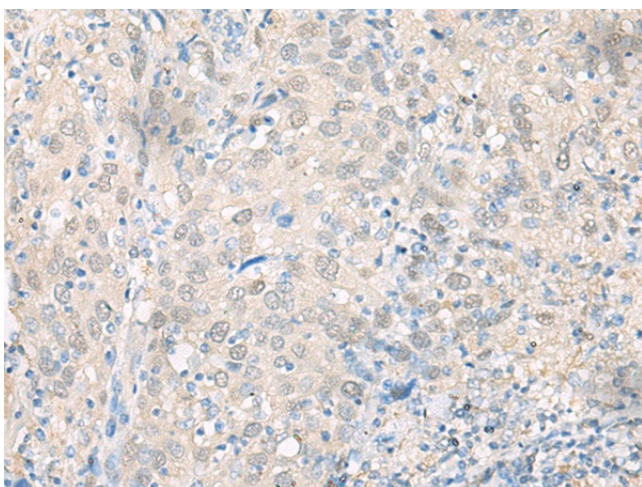
Gel: 8%SDS-PAGE
 Lysate: 40 µg
 Lane 1-7: 231 cell
 HeLa cell
 Jurkat cell
 A549 cell
 NIH/3T3 cell
 Human cerebrum tissue
 Mouse brain tissue lysates
 Primary antibody: TA370245 (HSPA2 Antibody) at dilution 1/200
 Secondary antibody: Goat anti rabbit IgG at 1/8000 dilution
 Exposure time: 5 seconds



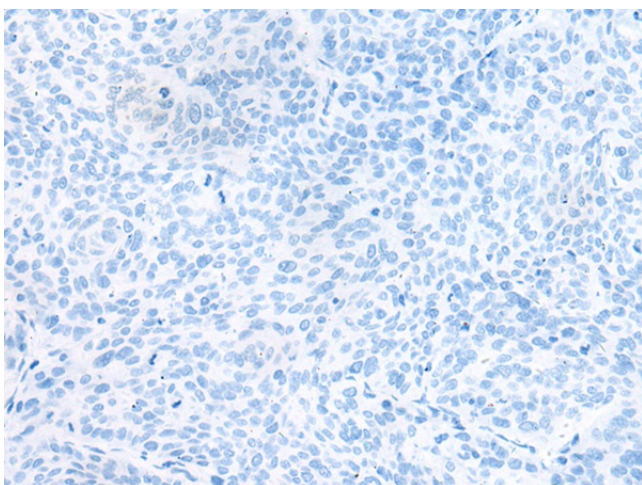
Immunohistochemistry of paraffin-embedded Human thyroid cancer tissue using TA370245 (HSPA2 Antibody) at dilution 1/20 (Original magnification: ×200)



Immunohistochemistry of paraffin-embedded Human thyroid cancer tissue using TA370245 (HSPA2 Antibody) at dilution 1/20, treated with fusion protein. (Original magnification: $\times 200$)



Immunohistochemistry of paraffin-embedded Human cervical cancer tissue using TA370245 (HSPA2 Antibody) at dilution 1/20 (Original magnification: $\times 200$)



Immunohistochemistry of paraffin-embedded Human cervical cancer tissue using TA370245 (HSPA2 Antibody) at dilution 1/20, treated with fusion protein. (Original magnification: $\times 200$)