

## Product datasheet for **TA370244**

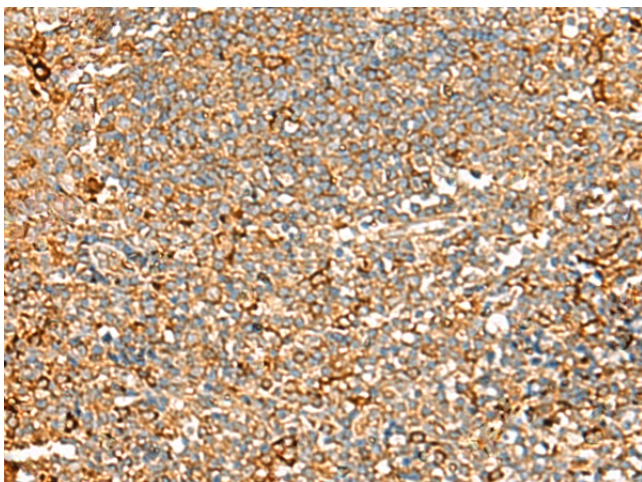
### ASMTL Rabbit Polyclonal Antibody

#### Product data:

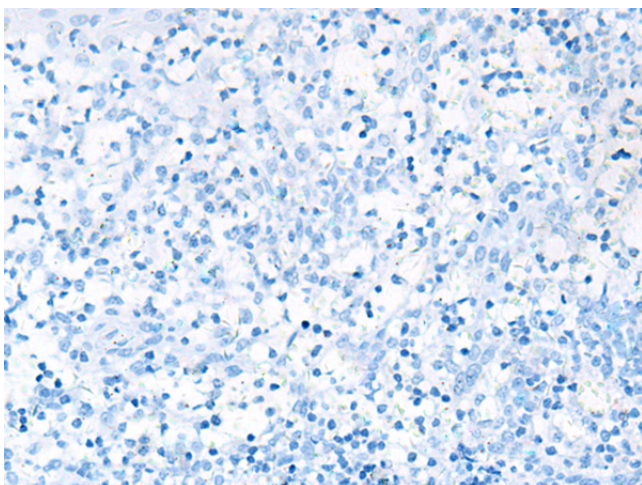
|                       |  |
|-----------------------|--|
| Product Type:         | Primary Antibodies   |
| Applications:         | IHC  |
| Recommended Dilution: | IHC: 100-300<br>Positive control: Human tonsil<br>Predicted cell location: Cytoplasm   |
| Reactivity:           | Human  |
| Host:                 | Rabbit   |
| Isotype:              | IgG  |
| Clonality:            | Polyclonal   |
| Immunogen:            | Fusion protein of human ASMTL  |
| Formulation:          | pH7.4 PBS, 0.05% NaN <sub>3</sub> , 40% Glycerol   |
| Concentration:        | lot specific   |
| Purification:         | Antigen affinity purification  |
| Conjugation:          | Unconjugated   |
| Storage:              | Store at -20°C.  |
| Stability:            | 1 year   |
| Gene Name:            | acetylserotonin O-methyltransferase-like   |
| Database Link:        | <a href="#">Entrez Gene 8623 Human O95671</a>  |
| Background:           | The protein encoded by this gene has an N-terminus that is similar to the multicopy associated filamentation (maf) protein of <i>Bacillus subtilis</i> and to orfE of <i>Escherichia coli</i> , while the C-terminus is similar to N-acetylserotonin O-methyltransferase. This gene is located in the pseudoautosomal region 1 (PAR1) of X and Y chromosomes. Three transcript variants encoding different isoforms have been found for this gene. |
| Synonyms:             | ASMTLX; ASMTLY; ASTML  |



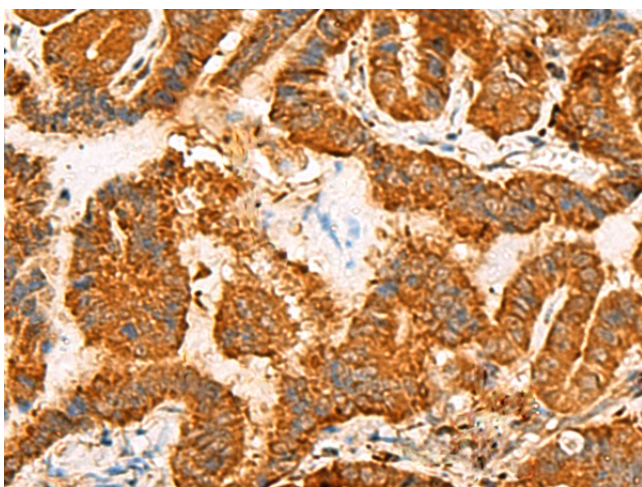
[View online »](#)

**Product images:**

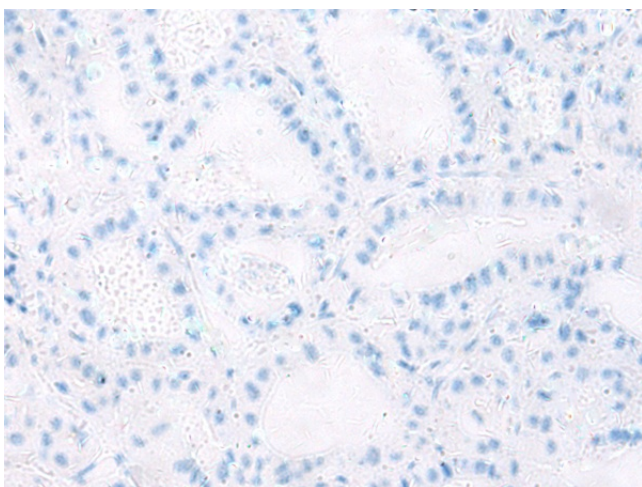
Immunohistochemistry of paraffin-embedded Human tonsil tissue using TA370244 (ASMTL Antibody) at dilution 1/100 (Original magnification:  $\times 200$ )



Immunohistochemistry of paraffin-embedded Human tonsil tissue using TA370244 (ASMTL Antibody) at dilution 1/100, treated with fusion protein. (Original magnification:  $\times 200$ )



Immunohistochemistry of paraffin-embedded Human thyroid cancer tissue using TA370244 (ASMTL Antibody) at dilution 1/100 (Original magnification:  $\times 200$ )



Immunohistochemistry of paraffin-embedded Human thyroid cancer tissue using TA370244 (ASMTL Antibody) at dilution 1/100, treated with fusion protein. (Original magnification:  $\times 200$ )