

## Product datasheet for **TA370233**

### PTBP1 Rabbit Polyclonal Antibody

#### Product data:

Product Type:	Primary Antibodies
Applications:	IHC, WB
Recommended Dilution:	WB: 500-2000 WB positive control: A549 and HepG2 cell lysates IHC: 50-200 Positive control: Human colorectal cancer Predicted cell location: Nucleus
Reactivity:	Human, Mouse, Rat
Host:	Rabbit
Isotype:	IgG
Clonality:	Polyclonal
Immunogen:	Fusion protein of human PTBP1
Formulation:	pH7.4 PBS, 0.05% NaN <sub>3</sub> , 40% Glycerol
Concentration:	lot specific
Purification:	Antigen affinity purification
Conjugation:	Unconjugated
Storage:	Store at -20°C.
Stability:	1 year
Predicted Protein Size:	57 kDa
Gene Name:	polypyrimidine tract binding protein 1
Database Link:	<a href="#">Entrez Gene 5725 Human P26599</a>



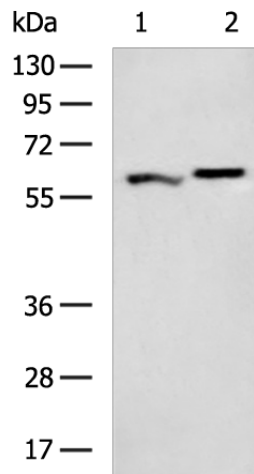
[View online »](#)

**Background:**

This gene belongs to the subfamily of ubiquitously expressed heterogeneous nuclear ribonucleoproteins (hnRNPs). The hnRNPs are RNA-binding proteins and they complex with heterogeneous nuclear RNA (hnRNA). These proteins are associated with pre-mRNAs in the nucleus and appear to influence pre-mRNA processing and other aspects of mRNA metabolism and transport. While all of the hnRNPs are present in the nucleus, some seem to shuttle between the nucleus and the cytoplasm. The hnRNP proteins have distinct nucleic acid binding properties. The protein encoded by this gene has four repeats of quasi-RNA recognition motif (RRM) domains that bind RNAs. This protein binds to the intronic polypyrimidine tracts that requires pre-mRNA splicing and acts via the protein degradation ubiquitin-proteasome pathway. It may also promote the binding of U2 snRNP to pre-mRNAs. This protein is localized in the nucleoplasm and it is also detected in the perinucleolar structure. Alternatively spliced transcript variants encoding different isoforms have been described.

**Synonyms:**

HNRNP-I; HNRNPI; HNRPI; MGC8461; MGC10830; pPTB; PTB; PTB-1; PTB-T; PTB2; PTB3; PTB4

**Product images:**

Gel: 8%SDS-PAGE

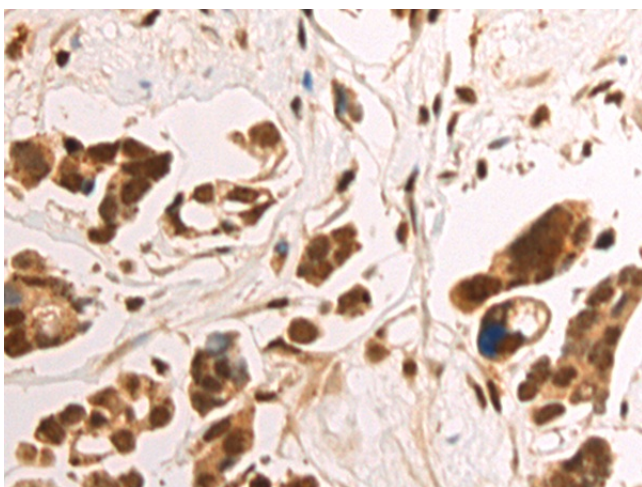
Lysate: 40 µg

Lane 1-2: A549 and HepG2 cell lysates

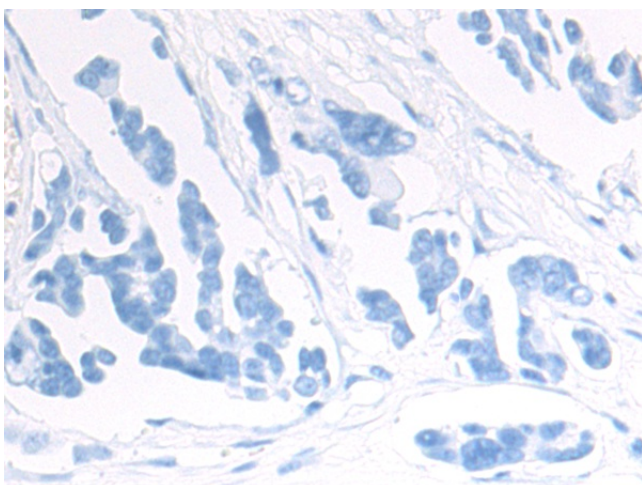
Primary antibody: TA370233 (PTBP1 Antibody) at dilution 1/1000

Secondary antibody: Goat anti rabbit IgG at 1/5000 dilution

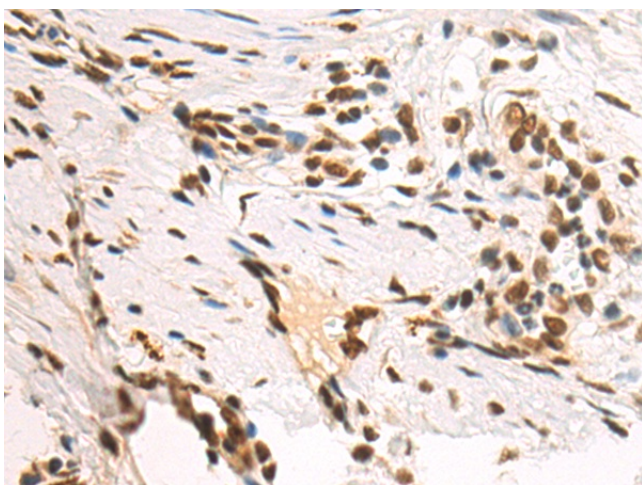
Exposure time: 30 seconds



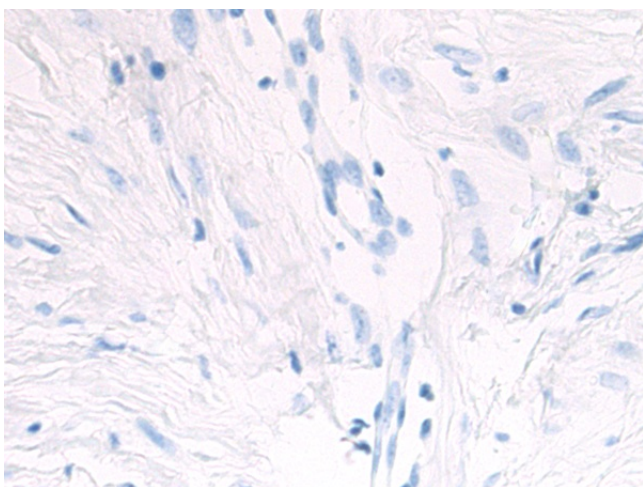
Immunohistochemistry of paraffin-embedded Human colorectal cancer tissue using TA370233 (PTBP1 Antibody) at dilution 1/70 (Original magnification: ×200)



Immunohistochemistry of paraffin-embedded Human colorectal cancer tissue using TA370233 (PTBP1 Antibody) at dilution 1/70, treated with fusion protein. (Original magnification: ×200)



Immunohistochemistry of paraffin-embedded Human breast cancer tissue using TA370233 (PTBP1 Antibody) at dilution 1/70 (Original magnification: ×200)



Immunohistochemistry of paraffin-embedded Human breast cancer tissue using TA370233 (PTBP1 Antibody) at dilution 1/70, treated with fusion protein. (Original magnification: ×200)