

## Product datasheet for **TA370231**

### **CORO2A Rabbit Polyclonal Antibody**

#### **Product data:**

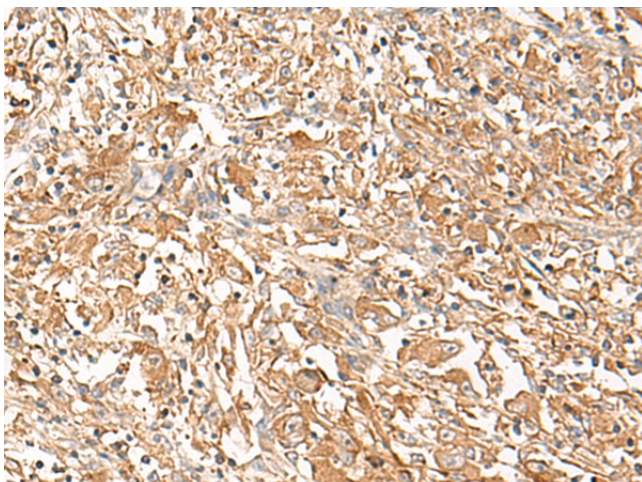
Product Type:	Primary Antibodies
Applications:	IHC
Recommended Dilution:	IHC: 40-200 Positive control: Human liver cancer Predicted cell location: Cytoplasm and Cell membrane
Reactivity:	Human
Host:	Rabbit
Isotype:	IgG
Clonality:	Polyclonal
Immunogen:	Fusion protein of human CORO2A
Formulation:	pH7.4 PBS, 0.05% NaN <sub>3</sub> , 40% Glycerol
Concentration:	lot specific
Purification:	Antigen affinity purification
Conjugation:	Unconjugated
Storage:	Store at -20°C.
Stability:	1 year
Gene Name:	coronin 2A
Database Link:	<a href="#">Entrez Gene 7464 Human Q92828</a>

**Background:** This gene encodes a member of the WD repeat protein family. WD repeats are minimally conserved regions of approximately 40 amino acids typically bracketed by gly-his and trp-aspartate (GH-WD), which may facilitate formation of heterotrimeric or multiprotein complexes. Members of this family are involved in a variety of cellular processes, including cell cycle progression, signal transduction, apoptosis, and gene regulation. This protein contains 5 WD repeats, and has a structural similarity with actin-binding proteins: the D. discoideum coronin and the human p57 protein, suggesting that this protein may also be an actin-binding protein that regulates cell motility. Alternative splicing of this gene generates 2 transcript variants.

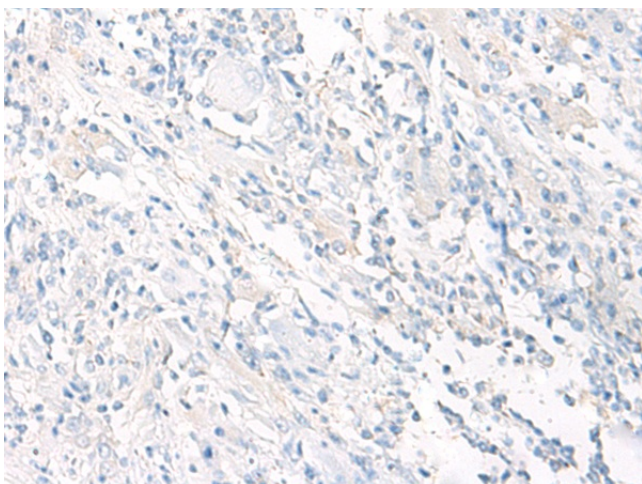
**Synonyms:** CLIPINB; coronin-2A; DKFZp686G19226; IR10; WDR2



[View online »](#)

**Product images:**

Immunohistochemistry of paraffin-embedded Human liver cancer tissue using TA370231 (CORO2A Antibody) at dilution 1/50 (Original magnification:  $\times 200$ )



Immunohistochemistry of paraffin-embedded Human liver cancer tissue using TA370231 (CORO2A Antibody) at dilution 1/50, treated with fusion protein. (Original magnification:  $\times 200$ )