

## Product datasheet for **TA370226S**

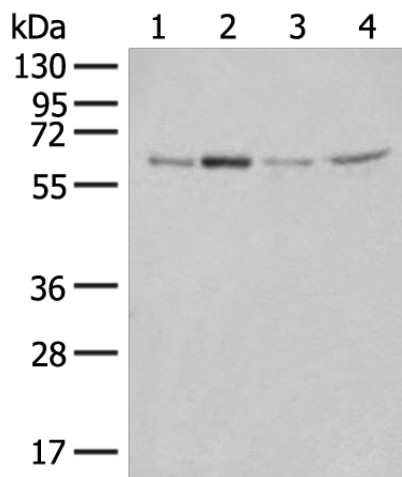
### ZGPAT Rabbit Polyclonal Antibody

#### Product data:

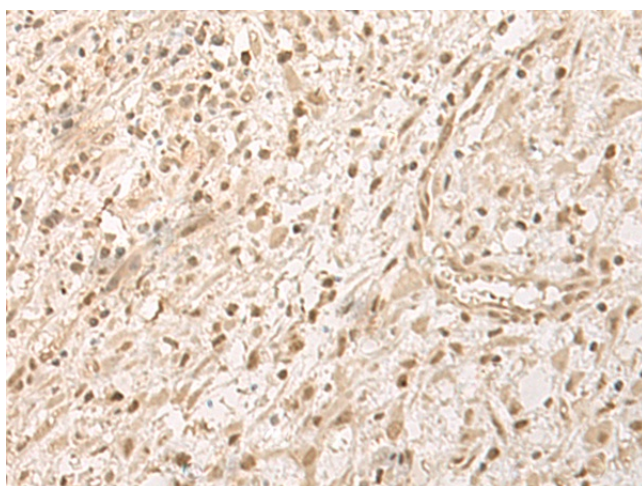
Product Type:	Primary Antibodies
Applications:	IHC, WB
Recommended Dilution:	WB: 200-1000 WB positive control: Human fetal liver tissue, LO2 cell, PC-3 cell, HEPG2 cell lysates IHC: 50-300 Positive control: Human ovarian cancer Predicted cell location: Nucleus
Reactivity:	Human
Host:	Rabbit
Isotype:	IgG
Clonality:	Polyclonal
Immunogen:	Fusion protein of human ZGPAT
Formulation:	pH7.4 PBS, 0.05% NaN <sub>3</sub> , 40% Glycerol
Purification:	Antigen affinity purification
Conjugation:	Unconjugated
Storage:	Store at -20°C.
Stability:	1 year
Predicted Protein Size:	57 kDa
Gene Name:	zinc finger CCCH-type and G-patch domain containing
Database Link:	<a href="#">Entrez Gene 84619 Human Q8N5A5</a>
Background:	Transcription repressor that specifically binds the 5'-GGAG[GA]A[GA]A-3' consensus sequence. Represses transcription by recruiting the chromatin multiprotein complex NuRD to target promoters. Negatively regulates expression of EGFR, a gene involved in cell proliferation, survival and migration. Its ability to repress genes of the EGFR pathway suggest it may act as a tumor suppressor. Able to suppress breast carcinogenesis.
Synonyms:	dJ583P15.3; FLJ14972; GPATC6; GPATCH6; KIAA1847; MGC44880; ZC3H9; ZC3HDC9; ZIP



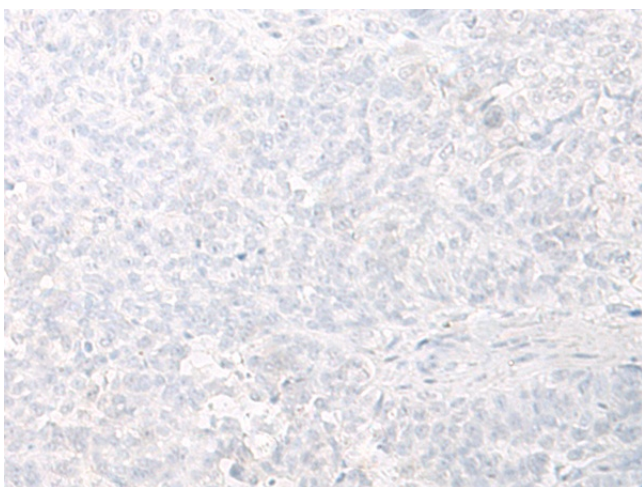
[View online »](#)

**Product images:**


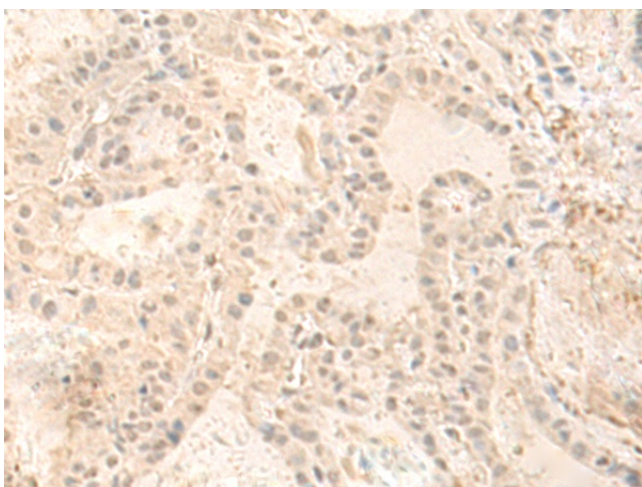
Gel: 8%SDS-PAGE  
 Lysate: 40 µg  
 Lane 1-4: Human fetal liver tissue  
 LO2 cell  
 PC-3 cell  
 HEPG2 cell lysates  
 Primary antibody: [TA370226] (ZGPAT Antibody)  
 at dilution 1/400  
 Secondary antibody: Goat anti rabbit IgG at  
 1/8000 dilution  
 Exposure time: 2 minutes



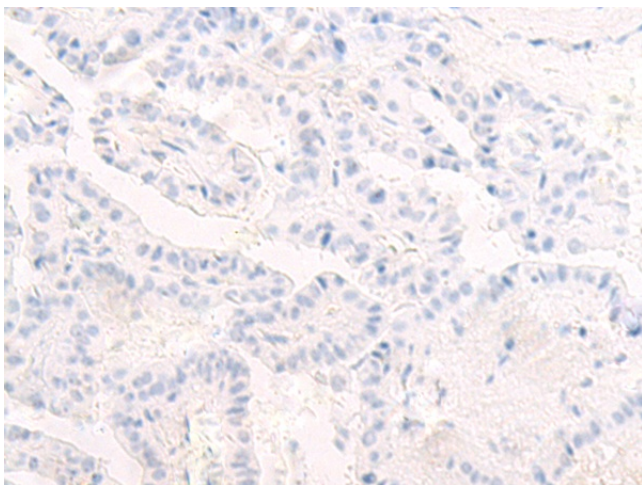
Immunohistochemistry of paraffin-embedded  
 Human ovarian cancer tissue using [TA370226]  
 (ZGPAT Antibody) at dilution 1/55 (Original  
 magnification: ×200)



Immunohistochemistry of paraffin-embedded Human ovarian cancer tissue using [TA370226] (ZGPAT Antibody) at dilution 1/55, treated with fusion protein. (Original magnification:  $\times 200$ )



Immunohistochemistry of paraffin-embedded Human thyroid cancer tissue using [TA370226] (ZGPAT Antibody) at dilution 1/55 (Original magnification:  $\times 200$ )



Immunohistochemistry of paraffin-embedded Human thyroid cancer tissue using [TA370226] (ZGPAT Antibody) at dilution 1/55, treated with fusion protein. (Original magnification:  $\times 200$ )