

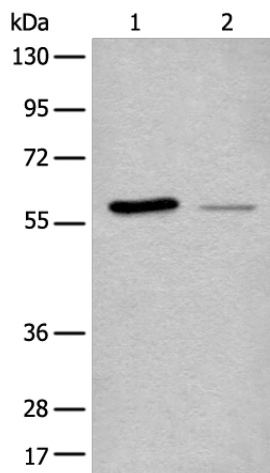
Product datasheet for TA370223S

DUS2L (DUS2) Rabbit Polyclonal Antibody

Product data:

Product Type:	Primary Antibodies
Applications:	IHC, WB
Recommended Dilution:	WB: 200-1000 WB positive control: HEPG2 cell and Human Bladder transitional cell carcinoma grade 2-3 tissue lysates IHC: 30-150 Positive control: Human thyroid cancer Predicted cell location: Cytoplasm
Reactivity:	Human, Mouse
Host:	Rabbit
Isotype:	IgG
Clonality:	Polyclonal
Immunogen:	Fusion protein of human DUS2
Formulation:	pH7.4 PBS, 0.05% NaN ₃ , 40% Glycerol
Purification:	Antigen affinity purification
Conjugation:	Unconjugated
Storage:	Store at -20°C.
Stability:	1 year
Predicted Protein Size:	55 kDa
Gene Name:	dihydrouridine synthase 2
Database Link:	Entrez Gene 54920 Human Q9NX74
Background:	This gene encodes a cytoplasmic protein that catalyzes the conversion of uridine residues to dihydrouridine in the D-loop of tRNA. The resulting modified bases confer enhanced regional flexibility to tRNA. The encoded protein may increase the rate of translation by inhibiting an interferon-induced protein kinase. This gene has been implicated in pulmonary carcinogenesis. Alternatively spliced transcript variants have been described for this gene.


[View online »](#)

Product images:


Gel: 8%SDS-PAGE

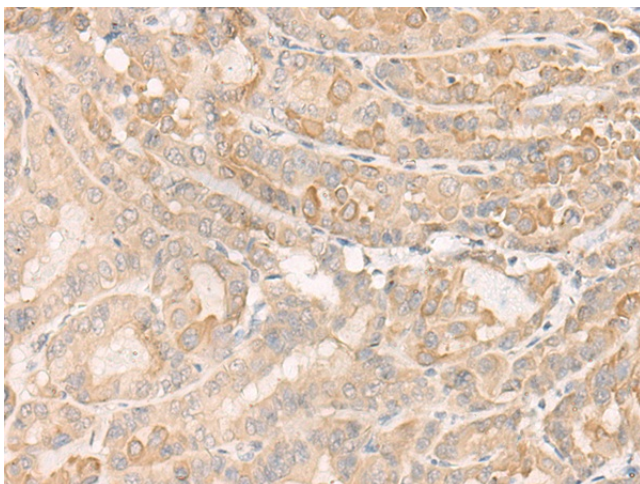
Lysate: 40 µg

Lane 1-2: HEPG2 cell and Human Bladder transitional cell carcinoma grade 2-3 tissue lysates

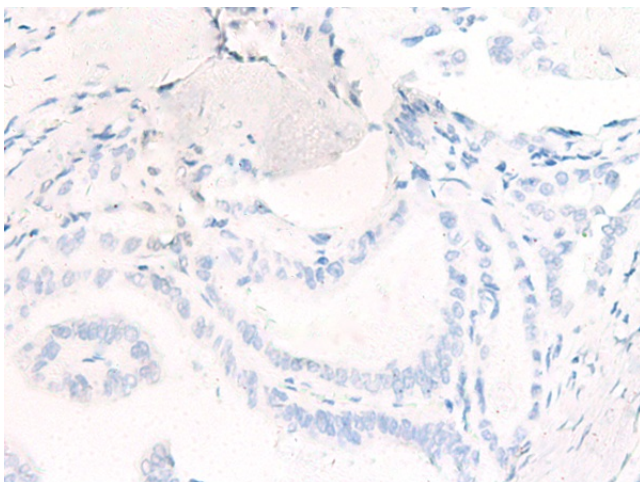
Primary antibody: [TA370223] (DUS2 Antibody) at dilution 1/200

Secondary antibody: Goat anti rabbit IgG at 1/8000 dilution

Exposure time: 5 seconds



Immunohistochemistry of paraffin-embedded Human thyroid cancer tissue using [TA370223] (DUS2 Antibody) at dilution 1/20 (Original magnification: ×200)



Immunohistochemistry of paraffin-embedded Human thyroid cancer tissue using [TA370223] (DUS2 Antibody) at dilution 1/20, treated with fusion protein. (Original magnification: ×200)

