

## Product datasheet for **TA370218S**

### CCDC47 Rabbit Polyclonal Antibody

#### Product data:

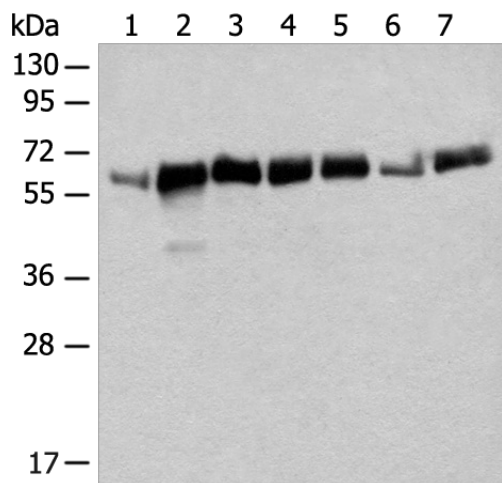
Product Type:	Primary Antibodies
Applications:	IHC, WB
Recommended Dilution:	WB: 500-2000 WB positive control: Mouse heart tissue, Mouse liver tissue, NIH/3T3 cell, Human bladder transitional cell carcinoma grade 2-3 tissue, A172 cell, Human placenta tissue, K562 cell lysates IHC: 30-150 Positive control: Human cervical cancer Predicted cell location: Cytoplasm
Reactivity:	Human, Mouse, Rat
Host:	Rabbit
Isotype:	IgG
Clonality:	Polyclonal
Immunogen:	Fusion protein of human CCDC47
Formulation:	pH7.4 PBS, 0.05% NaN <sub>3</sub> , 40% Glycerol
Purification:	Antigen affinity purification
Conjugation:	Unconjugated
Storage:	Store at -20°C.
Stability:	1 year
Predicted Protein Size:	56 kDa
Gene Name:	coiled-coil domain containing 47
Database Link:	<a href="#">Entrez Gene 57003 Human Q96A33</a>
Background:	The coiled-coil domain is a common protein motif that is often involved in protein oligomerization and is found in proteins such as transcription factors and intermediate filaments. The CCDC47 gene maps to chromosome 17 at 17q23.3. Little is known about this single-pass membrane protein except that the coiled-coil domain is within the cytosolic domain near the carboxy terminus.



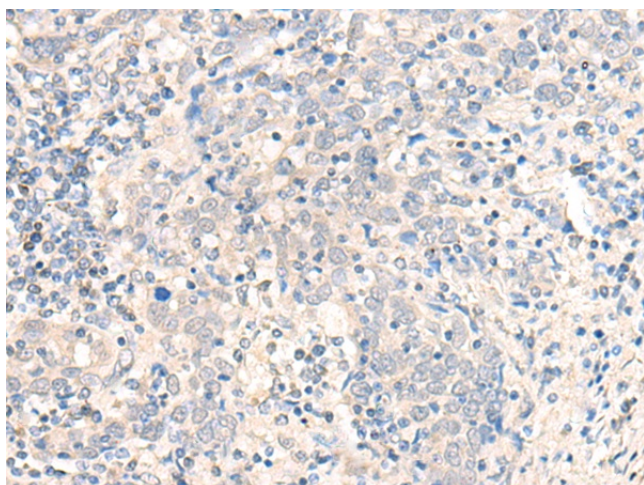
[View online »](#)

Synonyms: GK001; MSTP041

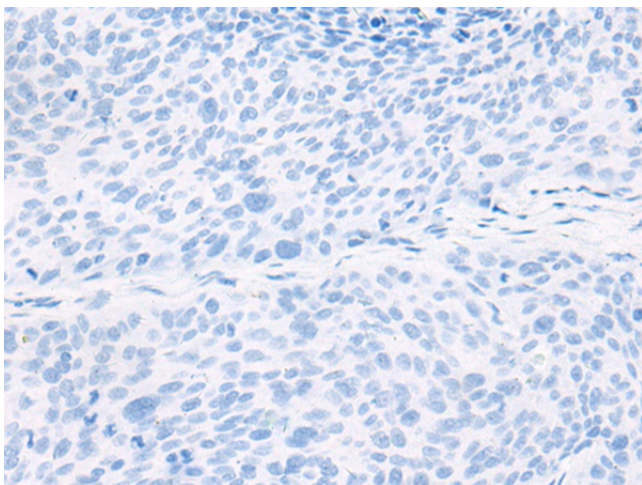
### Product images:



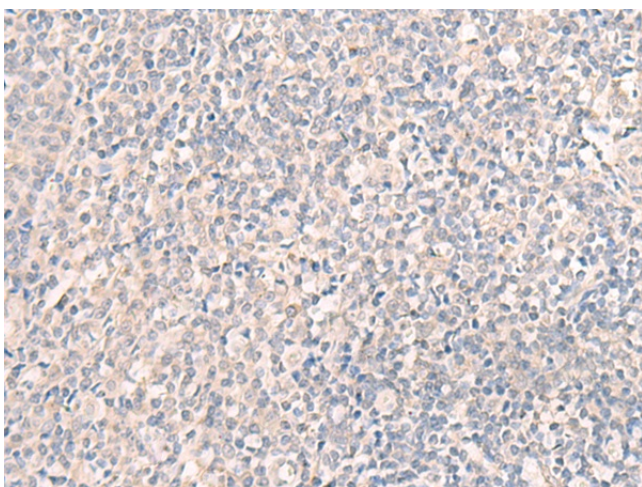
Gel: 8%SDS-PAGE  
Lysate: 40  $\mu$ g  
Lane 1-7: Mouse heart tissue  
Mouse liver tissue  
NIH/3T3 cell  
Human bladder transitional cell carcinoma grade 2-3 tissue  
A172 cell  
Human placenta tissue  
K562 cell lysates  
Primary antibody: [TA370218] (CCDC47 Antibody) at dilution 1/350  
Secondary antibody: Goat anti rabbit IgG at 1/8000 dilution  
Exposure time: 5 seconds



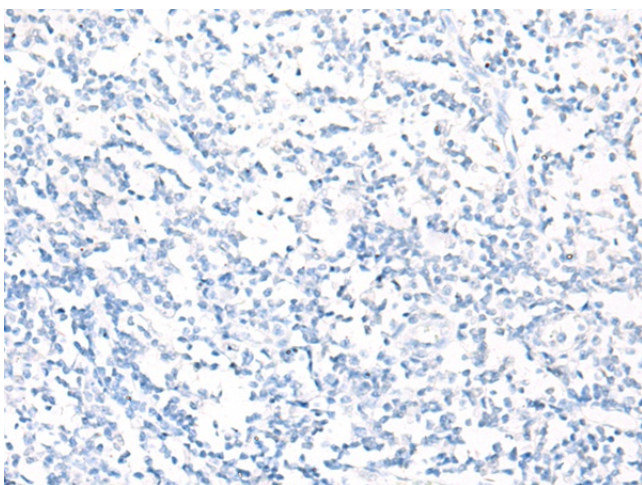
Immunohistochemistry of paraffin-embedded Human cervical cancer tissue using [TA370218] (CCDC47 Antibody) at dilution 1/25 (Original magnification:  $\times$ 200)



Immunohistochemistry of paraffin-embedded Human cervical cancer tissue using [TA370218] (CCDC47 Antibody) at dilution 1/25, treated with fusion protein. (Original magnification: ×200)



Immunohistochemistry of paraffin-embedded Human tonsil tissue using [TA370218] (CCDC47 Antibody) at dilution 1/25 (Original magnification: ×200)



Immunohistochemistry of paraffin-embedded Human tonsil tissue using [TA370218] (CCDC47 Antibody) at dilution 1/25, treated with fusion protein. (Original magnification: ×200)