

Product datasheet for **TA370216**

SHC (SHC1) Rabbit Polyclonal Antibody

Product data:

Product Type:	Primary Antibodies
Applications:	IHC, WB
Recommended Dilution:	WB: 200-1000 WB positive control: Hela, HEPG2, NIH/3T3, 293T, Jurkat, RAW264.7 and 231 cell lysates IHC: 25-100 Positive control: Human cervical cancer Predicted cell location: Cytoplasm
Reactivity:	Human, Mouse, Rat
Host:	Rabbit
Isotype:	IgG
Clonality:	Polyclonal
Immunogen:	Fusion protein of human SHC1
Formulation:	pH7.4 PBS, 0.05% NaN ₃ , 40% Glycerol
Concentration:	lot specific
Purification:	Antigen affinity purification
Conjugation:	Unconjugated
Storage:	Store at -20°C.
Stability:	1 year
Predicted Protein Size:	63 kDa
Gene Name:	SHC adaptor protein 1
Database Link:	Entrez Gene 6464 Human P29353



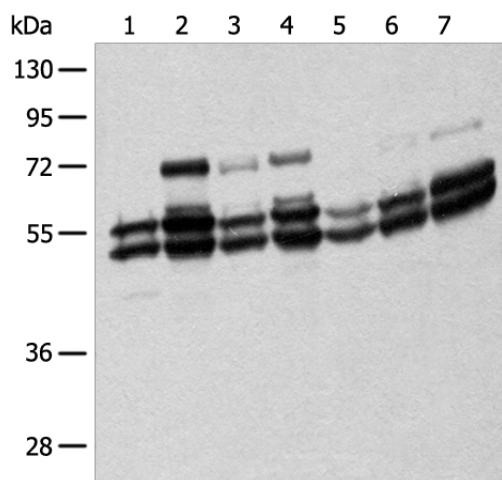
[View online »](#)

Background:

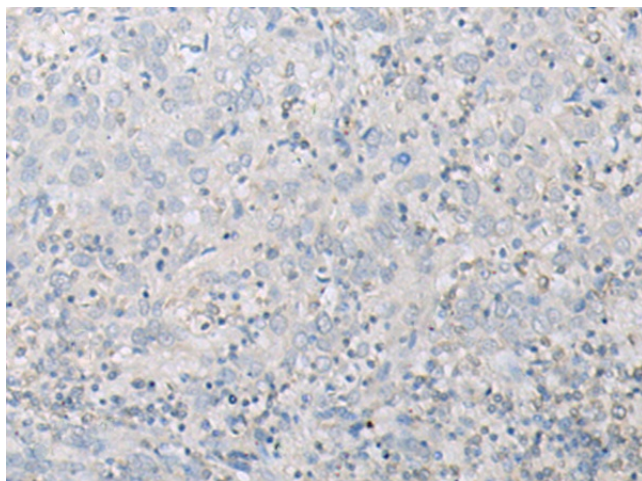
This gene encodes three main isoforms that differ in activities and subcellular location. While all three are adapter proteins in signal transduction pathways, the longest (p66Shc) may be involved in regulating life span and the effects of reactive oxygen species. The other two isoforms, p52Shc and p46Shc, link activated receptor tyrosine kinases to the Ras pathway by recruitment of the GRB2/SOS complex. p66Shc is not involved in Ras activation. Unlike the other two isoforms, p46Shc is targeted to the mitochondrial matrix. Several transcript variants encoding different isoforms have been found for this gene.

Synonyms:

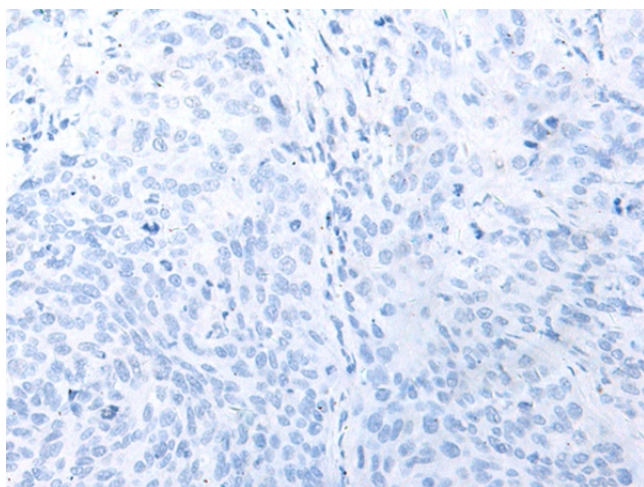
FLJ26504; OTTHUMP00000035472; p66; SHC; SHCA

Product images:


Gel: 8%SDS-PAGE
 Lysate: 40 µg
 Lane 1-7: HeLa
 HEPG2
 NIH/3T3
 293T
 Jurkat
 RAW264.7 and 231 cell lysates
 Primary antibody: TA370216 (SHC1 Antibody) at dilution 1/250
 Secondary antibody: Goat anti rabbit IgG at 1/8000 dilution
 Exposure time: 30 seconds



Immunohistochemistry of paraffin-embedded Human cervical cancer tissue using TA370216 (SHC1 Antibody) at dilution 1/20 (Original magnification: ×200)



Immunohistochemistry of paraffin-embedded Human cervical cancer tissue using TA370216 (SHC1 Antibody) at dilution 1/20, treated with fusion protein. (Original magnification: $\times 200$)