

## Product datasheet for **TA370215**

### GPBP1L1 Rabbit Polyclonal Antibody

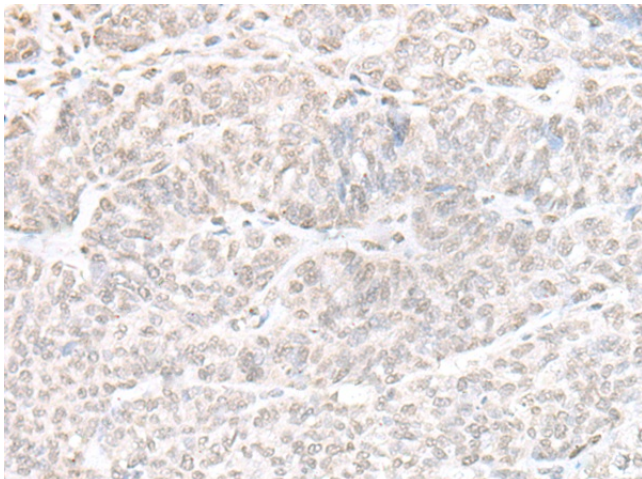
#### Product data:

Product Type:	Primary Antibodies
Applications:	IHC
Recommended Dilution:	IHC: 30-150 Positive control: Human ovarian cancer Predicted cell location: Nucleus
Reactivity:	Human, Mouse, Rat
Host:	Rabbit
Isotype:	IgG
Clonality:	Polyclonal
Immunogen:	Fusion protein of human GPBP1L1
Formulation:	pH7.4 PBS, 0.05% NaN <sub>3</sub> , 40% Glycerol
Concentration:	lot specific
Purification:	Antigen affinity purification
Conjugation:	Unconjugated
Storage:	Store at -20°C.
Stability:	1 year
Gene Name:	GC-rich promoter binding protein 1 like 1
Database Link:	<a href="#">Entrez Gene 60313 Human</a> <a href="#">Q9HC44</a>
Background:	Possible transcription factor.
Synonyms:	OTTHUMP00000038560; RP11-767N6.1; SP192

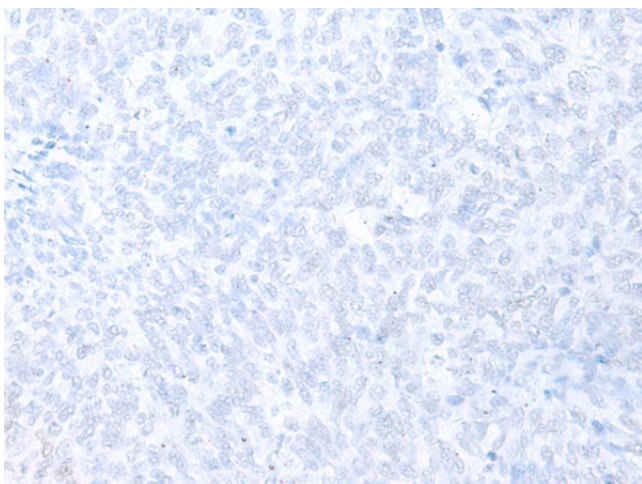


[View online »](#)

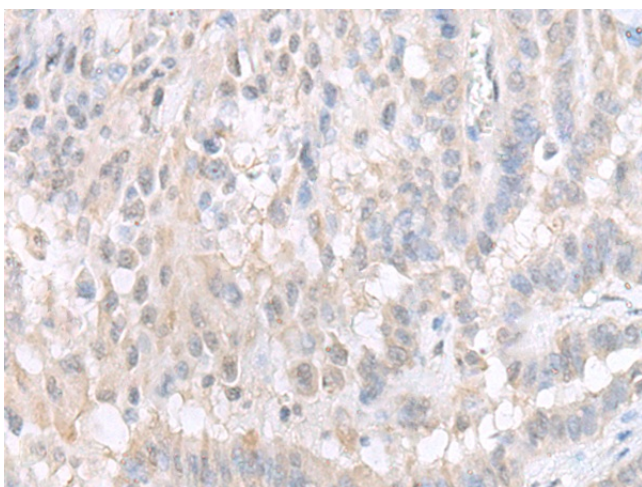
## Product images:



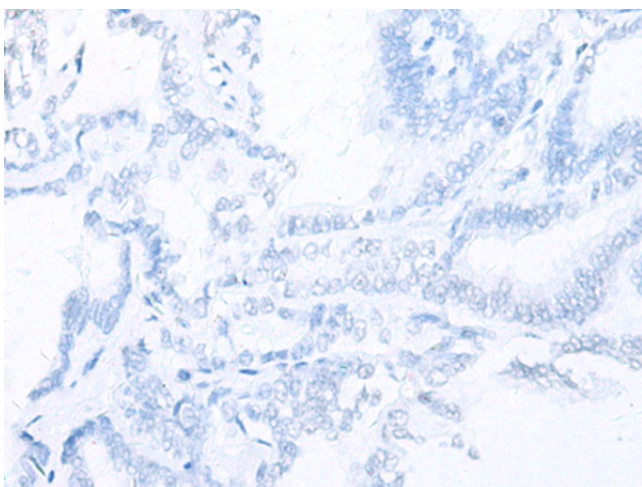
Immunohistochemistry of paraffin-embedded Human ovarian cancer tissue using TA370215 (GPBP1L1 Antibody) at dilution 1/20 (Original magnification: ×200)



Immunohistochemistry of paraffin-embedded Human ovarian cancer tissue using TA370215 (GPBP1L1 Antibody) at dilution 1/20, treated with fusion protein. (Original magnification: ×200)



Immunohistochemistry of paraffin-embedded Human thyroid cancer tissue using TA370215 (GPBP1L1 Antibody) at dilution 1/20 (Original magnification: ×200)



Immunohistochemistry of paraffin-embedded Human thyroid cancer tissue using TA370215 (GPBP1L1 Antibody) at dilution 1/20, treated with fusion protein. (Original magnification: ×200)