

Product datasheet for **TA370209**

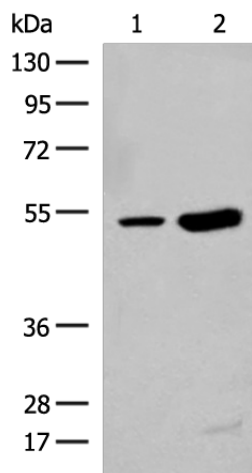
ZBTB43 Rabbit Polyclonal Antibody

Product data:

| | |
|-------------------------|--|
| Product Type: | Primary Antibodies |
| Applications: | IHC, WB |
| Recommended Dilution: | WB: 500-2000 WB positive control: Human left thymus tissue and Mouse kidney tissue lysates IHC: 40-200 Positive control: Human gastric cancer Predicted cell location: Nucleus |
| Reactivity: | Human, Mouse |
| Host: | Rabbit |
| Isotype: | IgG |
| Clonality: | Polyclonal |
| Immunogen: | Fusion protein of human ZBTB43 |
| Formulation: | pH7.4 PBS, 0.05% NaN ₃ , 40% Glycerol |
| Concentration: | lot specific |
| Purification: | Antigen affinity purification |
| Conjugation: | Unconjugated |
| Storage: | Store at -20°C. |
| Stability: | 1 year |
| Predicted Protein Size: | 53 kDa |
| Gene Name: | zinc finger and BTB domain containing 43 |
| Database Link: | Entrez Gene 23099 Human O43298 |
| Background: | May be involved in transcriptional regulation. |
| Synonyms: | FLJ22470; KIAA0414; OTTHUMP00000022157; ZBTB22B; ZNF-X; ZNF297B |



[View online »](#)

Product images:

Gel: 8%SDS-PAGE

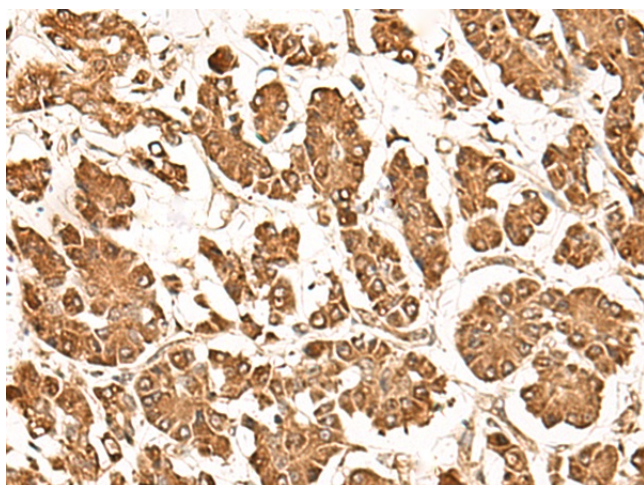
Lysate: 40 μ g

Lane 1-2: Human left thymus tissue and Mouse kidney tissue lysates

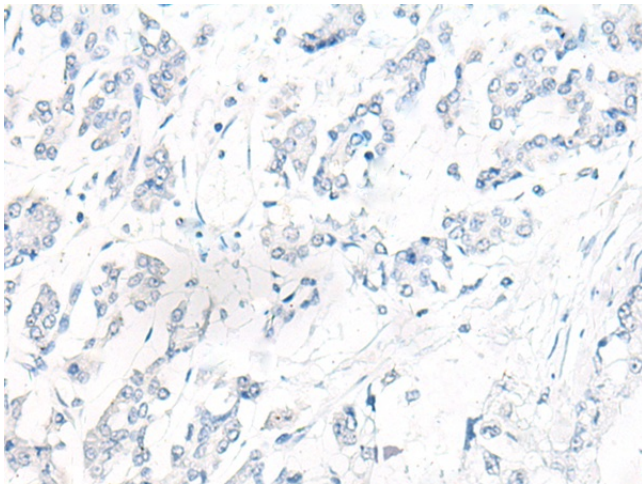
Primary antibody: TA370209 (ZBTB43 Antibody) at dilution 1/250

Secondary antibody: Goat anti rabbit IgG at 1/8000 dilution

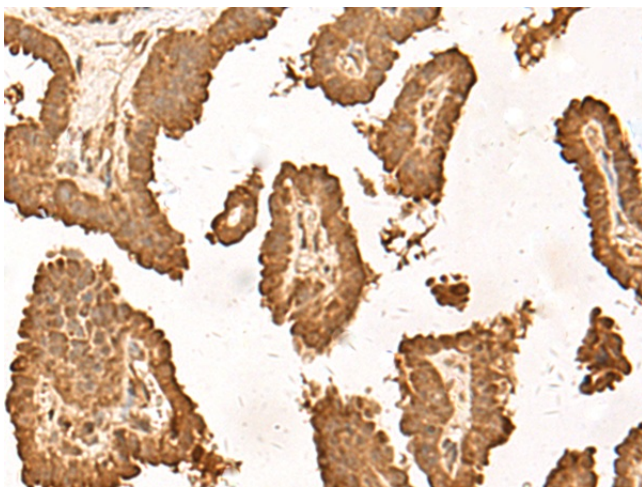
Exposure time: 1 minute



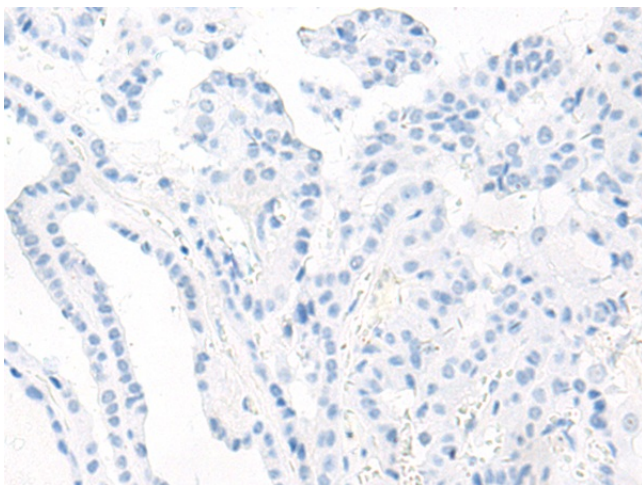
Immunohistochemistry of paraffin-embedded Human gastric cancer tissue using TA370209 (ZBTB43 Antibody) at dilution 1/40 (Original magnification: \times 200)



Immunohistochemistry of paraffin-embedded Human gastric cancer tissue using TA370209 (ZBTB43 Antibody) at dilution 1/40, treated with fusion protein. (Original magnification: ×200)



Immunohistochemistry of paraffin-embedded Human thyroid cancer tissue using TA370209 (ZBTB43 Antibody) at dilution 1/40 (Original magnification: ×200)



Immunohistochemistry of paraffin-embedded Human thyroid cancer tissue using TA370209 (ZBTB43 Antibody) at dilution 1/40, treated with fusion protein. (Original magnification: ×200)