

Product datasheet for **TA370205**

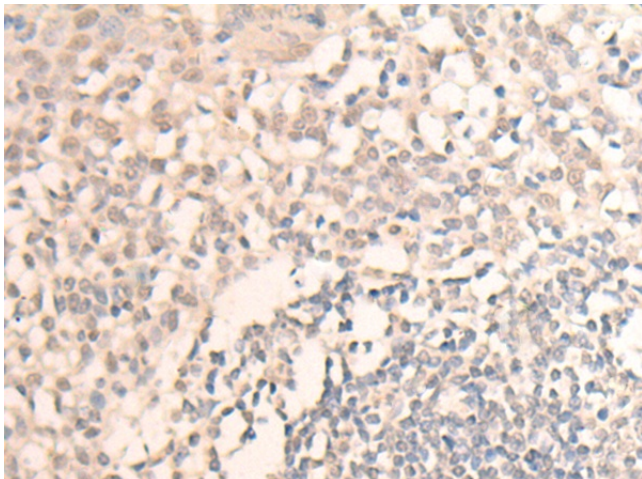
MLLT6 Rabbit Polyclonal Antibody

Product data:

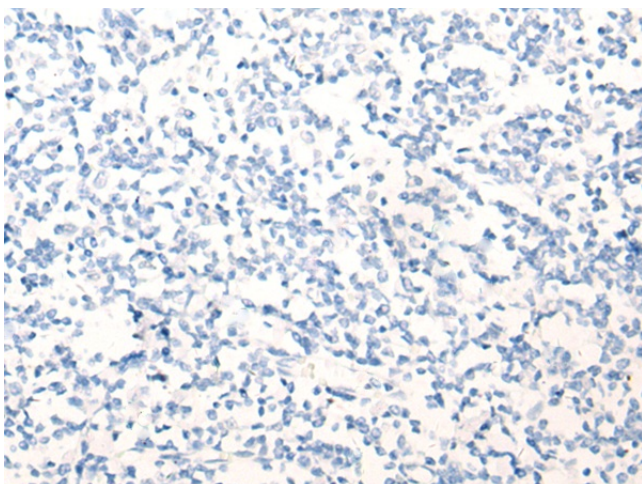
Product Type:	Primary Antibodies
Applications:	IHC
Recommended Dilution:	IHC: 30-150 Positive control: Human tonsil Predicted cell location: Nucleus
Reactivity:	Human
Host:	Rabbit
Isotype:	IgG
Clonality:	Polyclonal
Immunogen:	Fusion protein of human MLLT6
Formulation:	pH7.4 PBS, 0.05% NaN ₃ , 40% Glycerol
Concentration:	lot specific
Purification:	Antigen affinity purification
Conjugation:	Unconjugated
Storage:	Store at -20°C.
Stability:	1 year
Gene Name:	myeloid/lymphoid or mixed-lineage leukemia; translocated to, 6
Database Link:	Entrez Gene 4302 Human P55198
Background:	AF17 was discovered as part of a genetic rearrangement in the MLL (mixed lineage leukemia) gene associated with acute myeloid leukemia. AF17 is also known as MLLT6.
Synonyms:	AF17; FLJ23480



[View online »](#)

Product images:

Immunohistochemistry of paraffin-embedded Human tonsil tissue using TA370205 (MLLT6 Antibody) at dilution 1/40 (Original magnification: ×200)



Immunohistochemistry of paraffin-embedded Human tonsil tissue using TA370205 (MLLT6 Antibody) at dilution 1/40, treated with fusion protein. (Original magnification: ×200)