

## Product datasheet for **TA370204**

### RRP1 like protein (RRP1) Rabbit Polyclonal Antibody

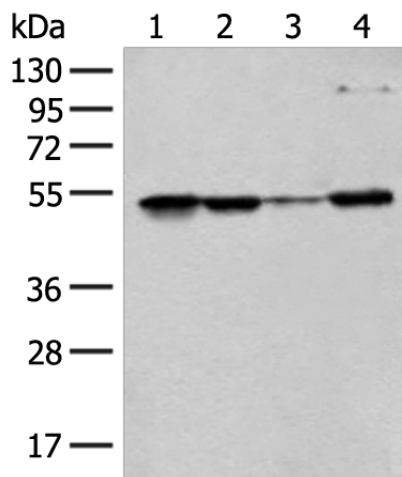
#### Product data:

Product Type:	Primary Antibodies
Applications:	IHC, WB
Recommended Dilution:	WB: 500-2000 WB positive control: Jurkat, 293T, Hela and HEPG2 cell lysates IHC: 40-200 Positive control: Human lung cancer Predicted cell location: Nucleus
Reactivity:	Human
Host:	Rabbit
Isotype:	IgG
Clonality:	Polyclonal
Immunogen:	Fusion protein of human RRP1
Formulation:	pH7.4 PBS, 0.05% NaN <sub>3</sub> , 40% Glycerol
Concentration:	lot specific
Purification:	Antigen affinity purification
Conjugation:	Unconjugated
Storage:	Store at -20°C.
Stability:	1 year
Predicted Protein Size:	53 kDa
Gene Name:	ribosomal RNA processing 1
Database Link:	<a href="#">Entrez Gene 8568 Human P56182</a>
Background:	The protein encoded by this gene is the putative homolog of the yeast ribosomal RNA processing protein RRP1. The encoded protein is involved in the late stages of nucleogenesis at the end of mitosis, and may be required for the generation of 28S rRNA.
Synonyms:	D21S2056E; NNP-1; NNP1; NOP52; RRP1A



[View online »](#)

## Product images:



Gel: 8%SDS-PAGE

Lysate: 40  $\mu$ g

Lane 1-4: Jurkat

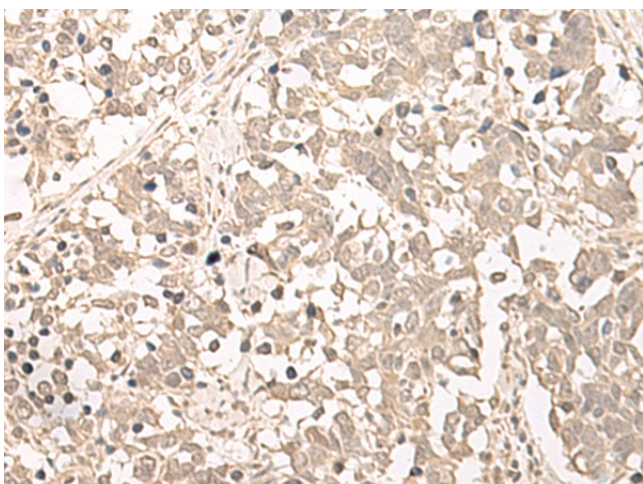
293T

HeLa and HEPG2 cell lysates

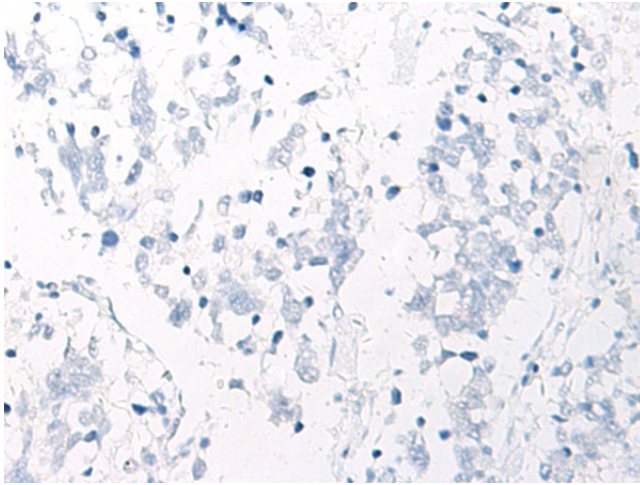
Primary antibody: TA370204 (RRP1 Antibody) at dilution 1/400

Secondary antibody: Goat anti rabbit IgG at 1/8000 dilution

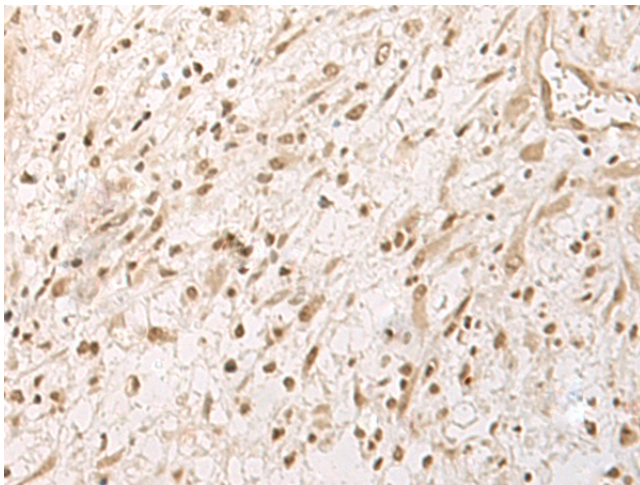
Exposure time: 30 seconds



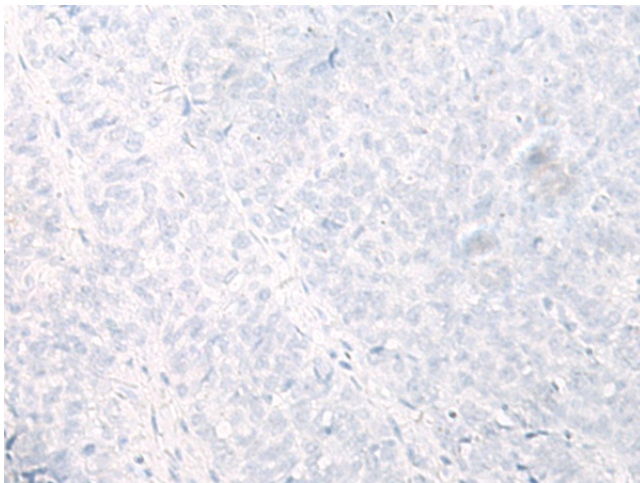
Immunohistochemistry of paraffin-embedded Human lung cancer tissue using TA370204 (RRP1 Antibody) at dilution 1/45 (Original magnification:  $\times$ 200)



Immunohistochemistry of paraffin-embedded Human lung cancer tissue using TA370204 (RRP1 Antibody) at dilution 1/45, treated with fusion protein. (Original magnification: x200)



Immunohistochemistry of paraffin-embedded Human ovarian cancer tissue using TA370204 (RRP1 Antibody) at dilution 1/45 (Original magnification: x200)



Immunohistochemistry of paraffin-embedded Human ovarian cancer tissue using TA370204 (RRP1 Antibody) at dilution 1/45, treated with fusion protein. (Original magnification: x200)