

## Product datasheet for **TA370200**

### SEPTIN10 Rabbit Polyclonal Antibody

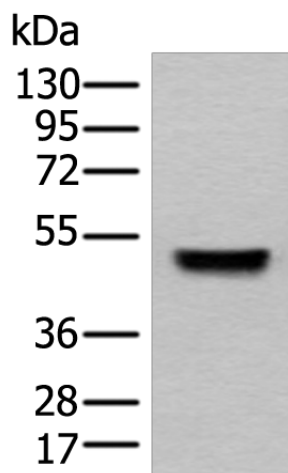
#### Product data:

Product Type:	Primary Antibodies
Applications:	IHC, WB
Recommended Dilution:	WB: 200-1000 WB positive control: Human fetal liver tissue lysate IHC: 50-300 Positive control: Human cervical cancer Predicted cell location: Cytoplasm
Reactivity:	Human, Mouse, Rat
Host:	Rabbit
Isotype:	IgG
Clonality:	Polyclonal
Immunogen:	Fusion protein of human SEPTIN10
Formulation:	pH7.4 PBS, 0.05% NaN <sub>3</sub> , 40% Glycerol
Concentration:	lot specific
Purification:	Antigen affinity purification
Conjugation:	Unconjugated
Storage:	Store at -20°C.
Stability:	1 year
Predicted Protein Size:	53 kDa
Gene Name:	septin 10
Database Link:	<a href="#">Entrez Gene 151011 Human Q9P0V9</a>
Background:	This gene encodes a member of the septin family of cytoskeletal proteins with GTPase activity. This protein localizes to the cytoplasm and nucleus and displays GTP-binding and GTPase activity. A pseudogene for this gene is located on chromosome 8. Alternative splicing results in multiple transcript variants. [provided by RefSeq, Apr 2012]
Synonyms:	FLJ11619; sept1-like

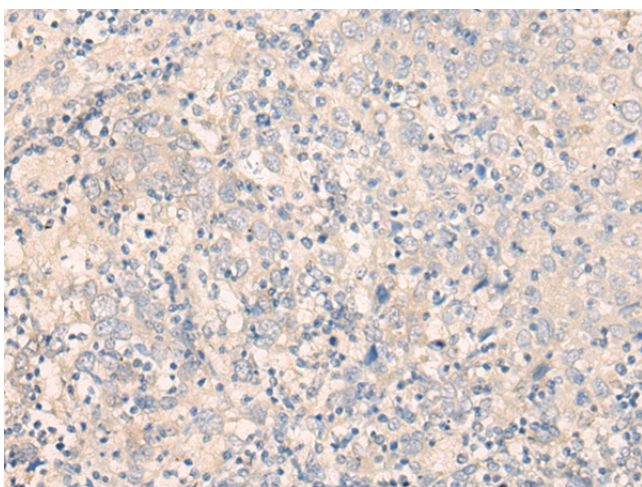


[View online »](#)

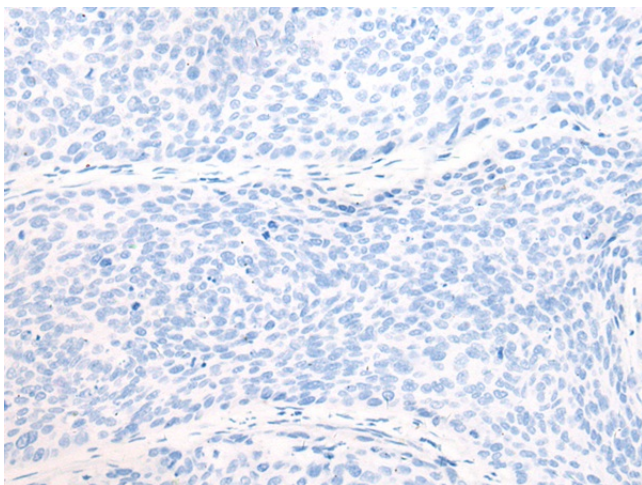
## Product images:



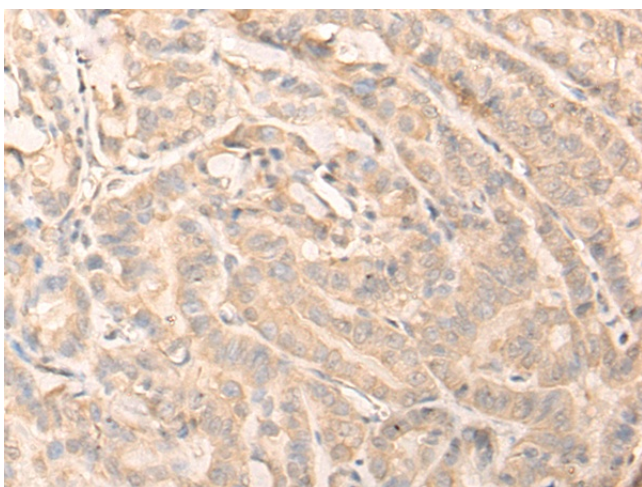
Gel: 8%SDS-PAGE  
Lysate: 40  $\mu$ g  
Lane: Human fetal liver tissue lysate  
Primary antibody: TA370200 (SEPTIN10 Antibody) at dilution 1/350  
Secondary antibody: Goat anti rabbit IgG at 1/8000 dilution  
Exposure time: 80 seconds



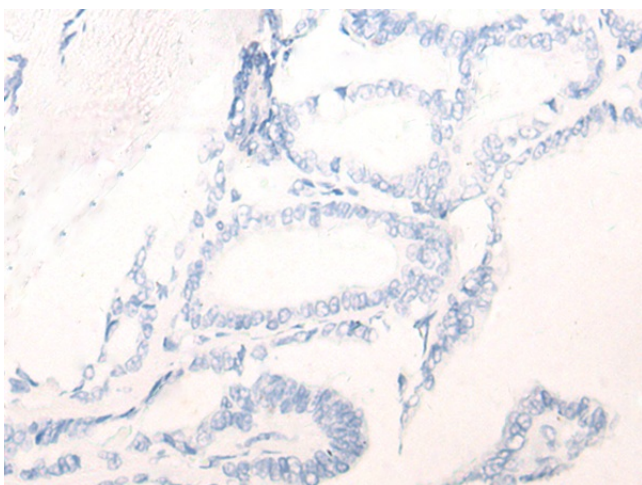
Immunohistochemistry of paraffin-embedded Human cervical cancer tissue using TA370200 (SEPTIN10 Antibody) at dilution 1/45 (Original magnification:  $\times$ 200)



Immunohistochemistry of paraffin-embedded Human cervical cancer tissue using TA370200 (SEPTIN10 Antibody) at dilution 1/45, treated with fusion protein. (Original magnification:  $\times 200$ )



Immunohistochemistry of paraffin-embedded Human thyroid cancer tissue using TA370200 (SEPTIN10 Antibody) at dilution 1/45 (Original magnification:  $\times 200$ )



Immunohistochemistry of paraffin-embedded Human thyroid cancer tissue using TA370200 (SEPTIN10 Antibody) at dilution 1/45, treated with fusion protein. (Original magnification:  $\times 200$ )