

Product datasheet for **TA370198S**

Tubulin (TUBA1B) Rabbit Polyclonal Antibody

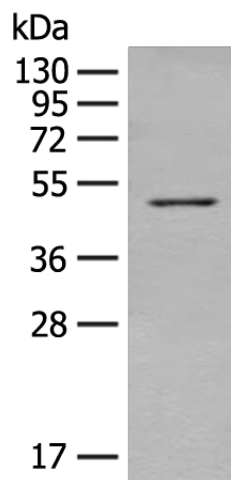
Product data:

| | |
|-------------------------|---|
| Product Type: | Primary Antibodies |
| Applications: | IHC, WB |
| Recommended Dilution: | WB: 200-1000 WB positive control: NIH/3T3 cell lysate IHC: 50-300 Positive control: Human thyroid cancer Predicted cell location: Cytoplasm |
| Reactivity: | Human, Mouse, Rat |
| Host: | Rabbit |
| Isotype: | IgG |
| Clonality: | Polyclonal |
| Immunogen: | Fusion protein of human TUBA1B |
| Formulation: | pH7.4 PBS, 0.05% NaN ₃ , 40% Glycerol |
| Purification: | Antigen affinity purification |
| Conjugation: | Unconjugated |
| Storage: | Store at -20°C. |
| Stability: | 1 year |
| Predicted Protein Size: | 50 kDa |
| Gene Name: | tubulin alpha 1b |
| Database Link: | Entrez Gene 10376 Human P68363 |
| Background: | Tubulin is the major constituent of microtubules. It binds two moles of GTP, one at an exchangeable site on the beta chain and one at a non-exchangeable site on the alpha chain. |
| Synonyms: | K-ALPHA-1 |

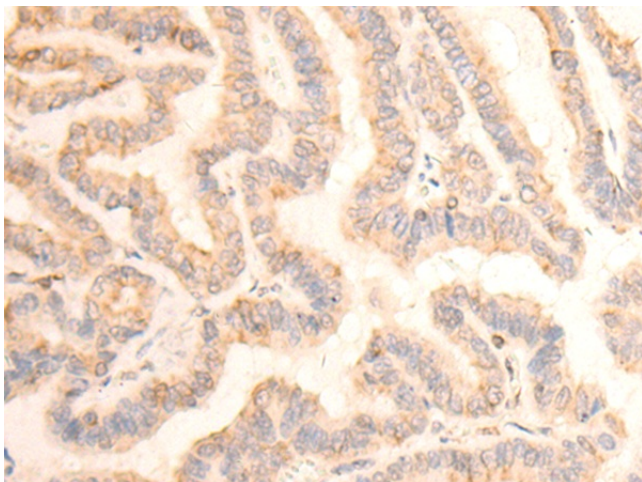


[View online »](#)

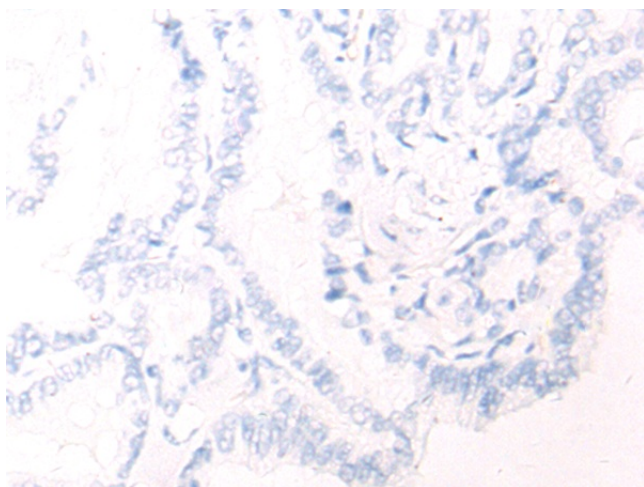
Product images:



Gel: 8%SDS-PAGE
Lysate: 40 µg
Lane: NIH/3T3 cell lysate
Primary antibody: [TA370198] (TUBA1B Antibody) at dilution 1/350
Secondary antibody: Goat anti rabbit IgG at 1/8000 dilution
Exposure time: 90 seconds



Immunohistochemistry of paraffin-embedded Human thyroid cancer tissue using [TA370198] (TUBA1B Antibody) at dilution 1/45 (Original magnification: ×200)



Immunohistochemistry of paraffin-embedded Human thyroid cancer tissue using [TA370198] (TUBA1B Antibody) at dilution 1/45, treated with fusion protein. (Original magnification: ×200)