

Product datasheet for **TA370198**

Tubulin (TUBA1B) Rabbit Polyclonal Antibody

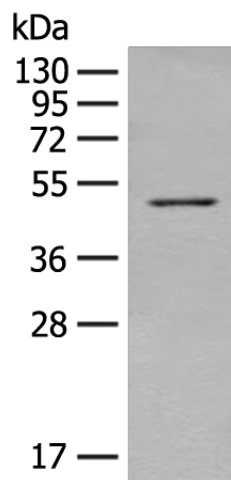
Product data:

Product Type:	Primary Antibodies
Applications:	IHC, WB
Recommended Dilution:	WB: 200-1000 WB positive control: NIH/3T3 cell lysate IHC: 50-300 Positive control: Human thyroid cancer Predicted cell location: Cytoplasm
Reactivity:	Human, Mouse, Rat
Host:	Rabbit
Isotype:	IgG
Clonality:	Polyclonal
Immunogen:	Fusion protein of human TUBA1B
Formulation:	pH7.4 PBS, 0.05% NaN ₃ , 40% Glycerol
Concentration:	lot specific
Purification:	Antigen affinity purification
Conjugation:	Unconjugated
Storage:	Store at -20°C.
Stability:	1 year
Predicted Protein Size:	50 kDa
Gene Name:	tubulin alpha 1b
Database Link:	Entrez Gene 10376 Human P68363
Background:	Tubulin is the major constituent of microtubules. It binds two moles of GTP, one at an exchangeable site on the beta chain and one at a non-exchangeable site on the alpha chain.
Synonyms:	K-ALPHA-1

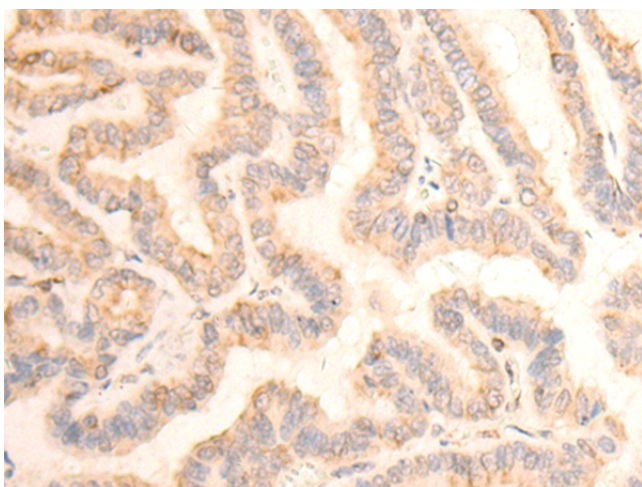


[View online »](#)

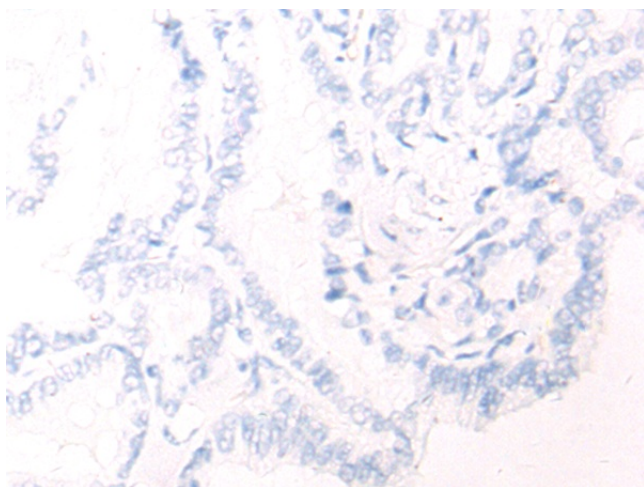
Product images:



Gel: 8%SDS-PAGE
Lysate: 40 μ g
Lane: NIH/3T3 cell lysate
Primary antibody: TA370198 (TUBA1B Antibody) at dilution 1/350
Secondary antibody: Goat anti rabbit IgG at 1/8000 dilution
Exposure time: 90 seconds



Immunohistochemistry of paraffin-embedded Human thyroid cancer tissue using TA370198 (TUBA1B Antibody) at dilution 1/45 (Original magnification: \times 200)



Immunohistochemistry of paraffin-embedded Human thyroid cancer tissue using TA370198 (TUBA1B Antibody) at dilution 1/45, treated with fusion protein. (Original magnification: ×200)