

Product datasheet for **TA370195S**

CRMP4 (DPYSL3) Rabbit Polyclonal Antibody

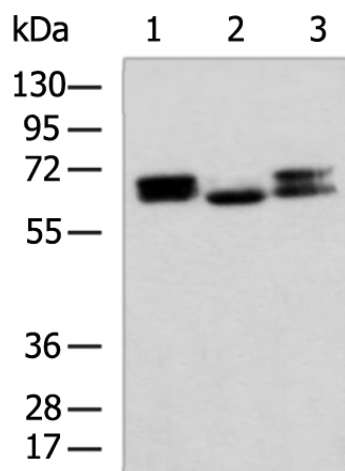
Product data:

| | |
|-------------------------|---|
| Product Type: | Primary Antibodies |
| Applications: | IHC, WB |
| Recommended Dilution: | WB: 1000-5000 WB positive control: Mouse brain tissue, Human cerebella tissue, Human cerebrum tissue lysates IHC: 50-100 Positive control: Human breast cancer Predicted cell location: Cytoplasm |
| Reactivity: | Human, Mouse, Rat |
| Host: | Rabbit |
| Isotype: | IgG |
| Clonality: | Polyclonal |
| Immunogen: | Fusion protein of human DPYSL3 |
| Formulation: | pH7.4 PBS, 0.05% NaN ₃ , 40% Glycerol |
| Purification: | Antigen affinity purification |
| Conjugation: | Unconjugated |
| Storage: | Store at -20°C. |
| Stability: | 1 year |
| Predicted Protein Size: | 62 kDa |
| Gene Name: | dihydropyrimidinase like 3 |
| Database Link: | Entrez Gene 1809 Human Q14195 |
| Background: | Necessary for signaling by class 3 semaphorins and subsequent remodeling of the cytoskeleton. Plays a role in axon guidance, neuronal growth cone collapse and cell migration (By similarity). |
| Synonyms: | CRMP-4; CRMP4; DRP-3; DRP3; LCRMP; ULIP |

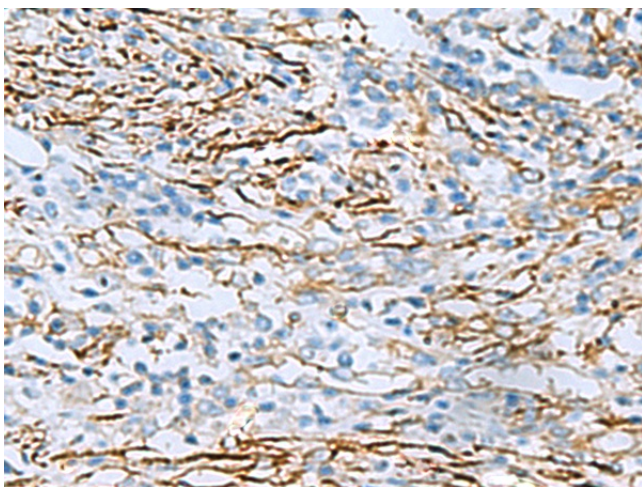


[View online »](#)

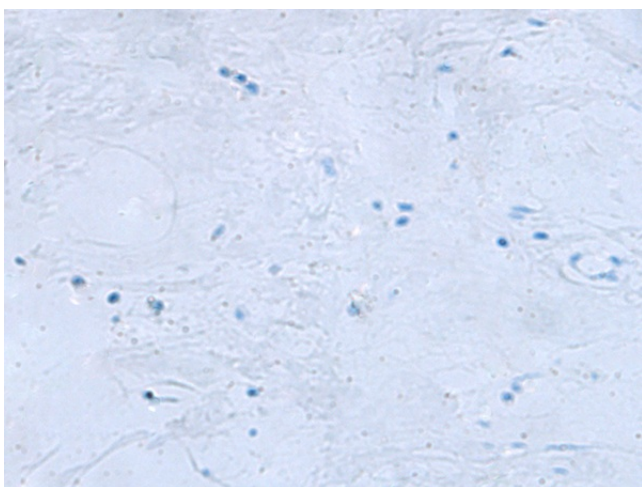
Product images:



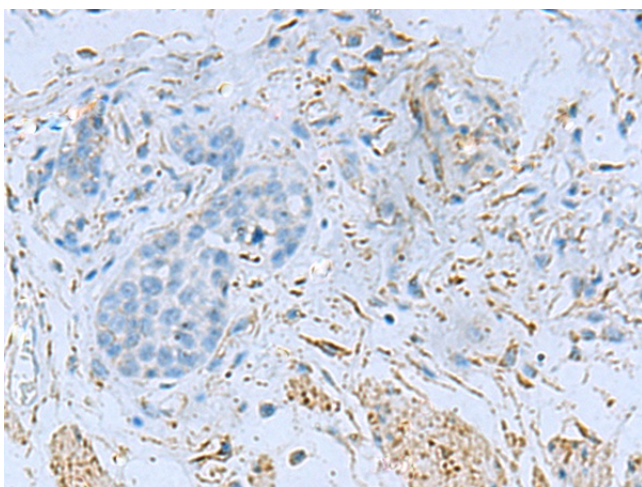
Gel: 8%SDS-PAGE
Lysate: 40 μ g
Lane 1-3: Mouse brain tissue
Human cerebella tissue
Human cerebrum tissue lysates
Primary antibody: [TA370195] (DPYSL3 Antibody)
at dilution 1/800
Secondary antibody: Goat anti rabbit IgG at
1/5000 dilution
Exposure time: 10 seconds



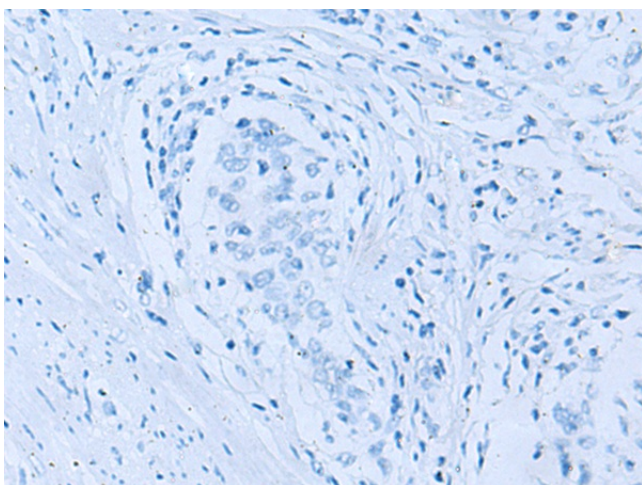
Immunohistochemistry of paraffin-embedded
Human breast cancer tissue using [TA370195]
(DPYSL3 Antibody) at dilution 1/55 (Original
magnification: \times 200)



Immunohistochemistry of paraffin-embedded Human breast cancer tissue using [TA370195] (DPYSL3 Antibody) at dilution 1/55, treated with fusion protein. (Original magnification: $\times 200$)



Immunohistochemistry of paraffin-embedded Human esophagus cancer tissue using [TA370195] (DPYSL3 Antibody) at dilution 1/55 (Original magnification: $\times 200$)



Immunohistochemistry of paraffin-embedded Human esophagus cancer tissue using [TA370195] (DPYSL3 Antibody) at dilution 1/55, treated with fusion protein. (Original magnification: $\times 200$)