

## Product datasheet for **TA370195**

### CRMP4 (DPYSL3) Rabbit Polyclonal Antibody

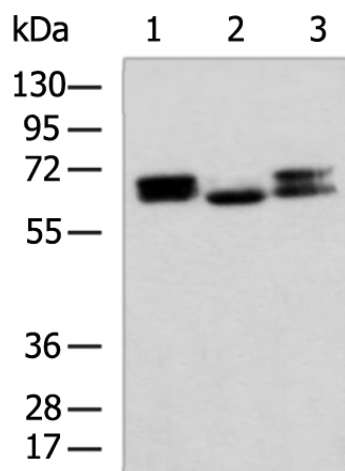
#### Product data:

Product Type:	Primary Antibodies
Applications:	IHC, WB
Recommended Dilution:	WB: 1000-5000 WB positive control: Mouse brain tissue, Human cerebella tissue, Human cerebrum tissue lysates IHC: 50-100 Positive control: Human breast cancer Predicted cell location: Cytoplasm
Reactivity:	Human, Mouse, Rat
Host:	Rabbit
Isotype:	IgG
Clonality:	Polyclonal
Immunogen:	Fusion protein of human DPYSL3
Formulation:	pH7.4 PBS, 0.05% NaN <sub>3</sub> , 40% Glycerol
Concentration:	lot specific
Purification:	Antigen affinity purification
Conjugation:	Unconjugated
Storage:	Store at -20°C.
Stability:	1 year
Predicted Protein Size:	62 kDa
Gene Name:	dihydropyrimidinase like 3
Database Link:	<a href="#">Entrez Gene 1809 Human Q14195</a>
Background:	Necessary for signaling by class 3 semaphorins and subsequent remodeling of the cytoskeleton. Plays a role in axon guidance, neuronal growth cone collapse and cell migration (By similarity).
Synonyms:	CRMP-4; CRMP4; DRP-3; DRP3; LCRMP; ULIP

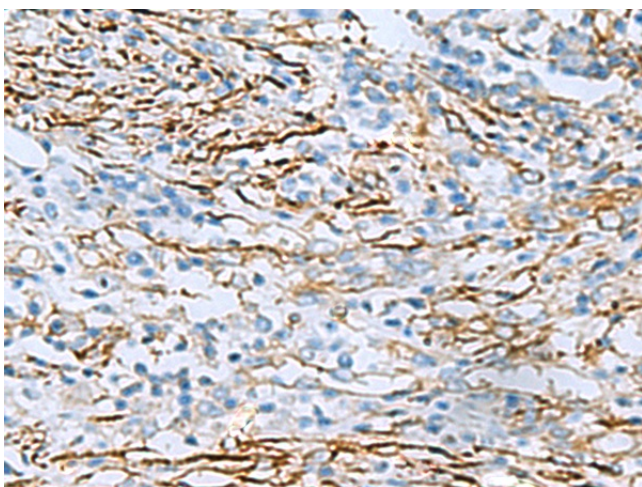


[View online »](#)

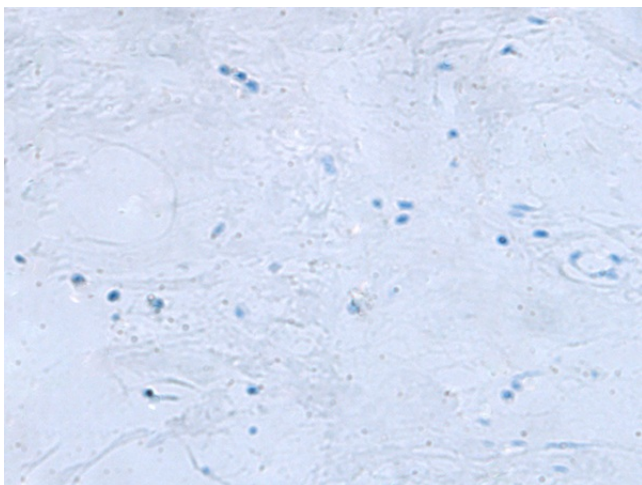
## Product images:



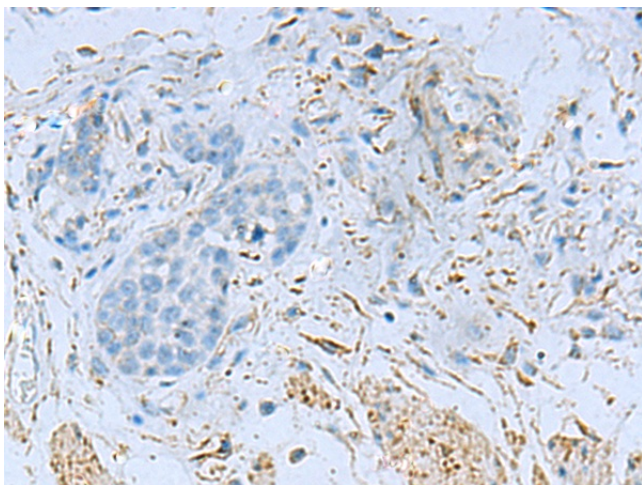
Gel: 8%SDS-PAGE  
Lysate: 40  $\mu$ g  
Lane 1-3: Mouse brain tissue  
Human cerebella tissue  
Human cerebrum tissue lysates  
Primary antibody: TA370195 (DPYSL3 Antibody)  
at dilution 1/800  
Secondary antibody: Goat anti rabbit IgG at  
1/5000 dilution  
Exposure time: 10 seconds



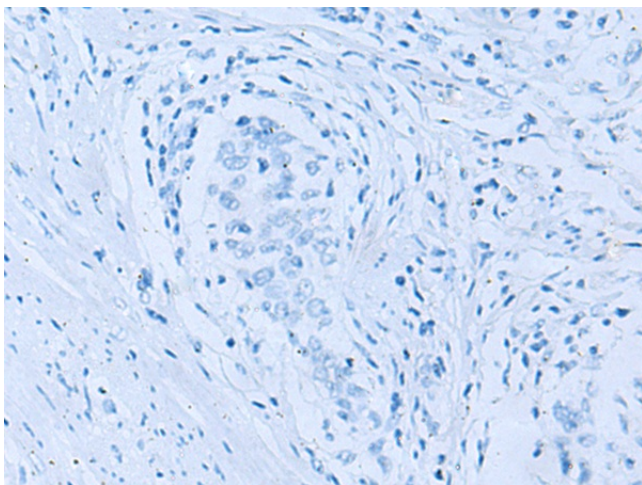
Immunohistochemistry of paraffin-embedded  
Human breast cancer tissue using TA370195  
(DPYSL3 Antibody) at dilution 1/55 (Original  
magnification:  $\times$ 200)



Immunohistochemistry of paraffin-embedded Human breast cancer tissue using TA370195 (DPYSL3 Antibody) at dilution 1/55, treated with fusion protein. (Original magnification: ×200)



Immunohistochemistry of paraffin-embedded Human esophagus cancer tissue using TA370195 (DPYSL3 Antibody) at dilution 1/55 (Original magnification: ×200)



Immunohistochemistry of paraffin-embedded Human esophagus cancer tissue using TA370195 (DPYSL3 Antibody) at dilution 1/55, treated with fusion protein. (Original magnification: ×200)