

Product datasheet for **TA370180**

EIF4A3 Rabbit Polyclonal Antibody

Product data:

Product Type:	Primary Antibodies
Applications:	IHC, WB
Recommended Dilution:	WB: 500-2000 WB positive control: Raji, HeLa, A549, HEPG2 and 231 cell lysates IHC: 50-300 Positive control: Human esophagus cancer Predicted cell location: Nucleus and Cytoplasm
Reactivity:	Human, Mouse, Rat
Host:	Rabbit
Isotype:	IgG
Clonality:	Polyclonal
Immunogen:	Fusion protein of human EIF4A3
Formulation:	pH7.4 PBS, 0.05% NaN ₃ , 40% Glycerol
Concentration:	lot specific
Purification:	Antigen affinity purification
Conjugation:	Unconjugated
Storage:	Store at -20°C.
Stability:	1 year
Predicted Protein Size:	47 kDa
Gene Name:	eukaryotic translation initiation factor 4A3
Database Link:	Entrez Gene 9775 Human P38919



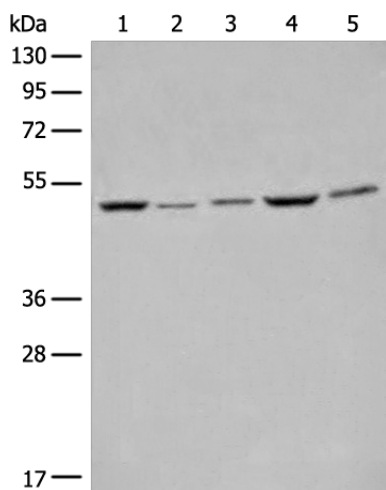
[View online »](#)

Background:

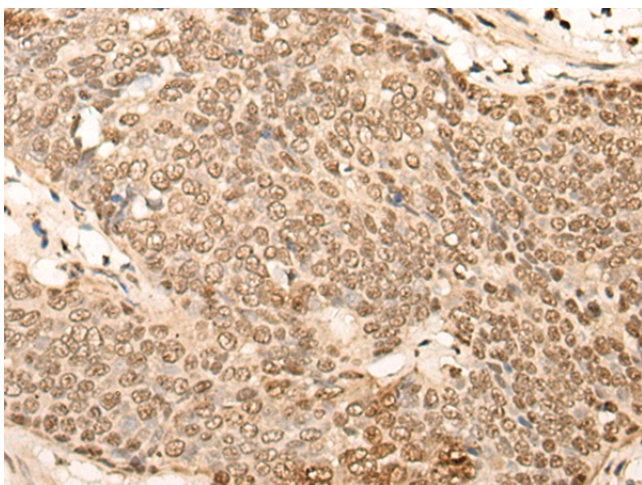
This gene encodes a member of the DEAD box protein family. DEAD box proteins, characterized by the conserved motif Asp-Glu-Ala-Asp (DEAD), are putative RNA helicases. They are implicated in a number of cellular processes involving alteration of RNA secondary structure, such as translation initiation, nuclear and mitochondrial splicing, and ribosome and spliceosome assembly. Based on their distribution patterns, some members of this family are believed to be involved in embryogenesis, spermatogenesis, and cellular growth and division. The protein encoded by this gene is a nuclear matrix protein. Its amino acid sequence is highly similar to the amino acid sequences of the translation initiation factors eIF4A1 and eIF4A2, two other members of the DEAD box protein family.

Synonyms:

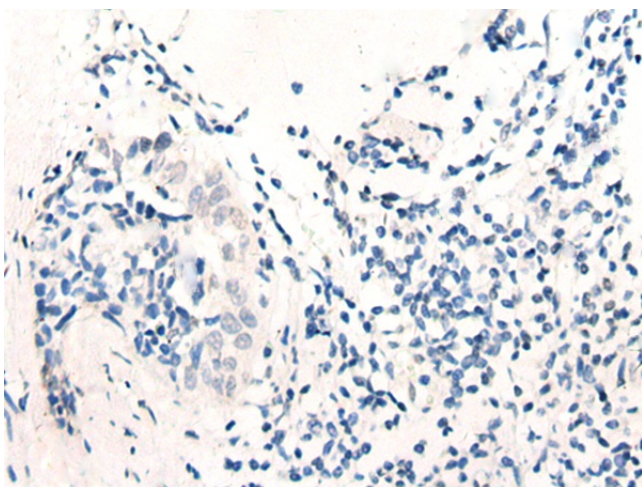
DDX48; EIF4AIII; hNMP265; KIAA0111; MGC10862; NMP265; NUK-34

Product images:


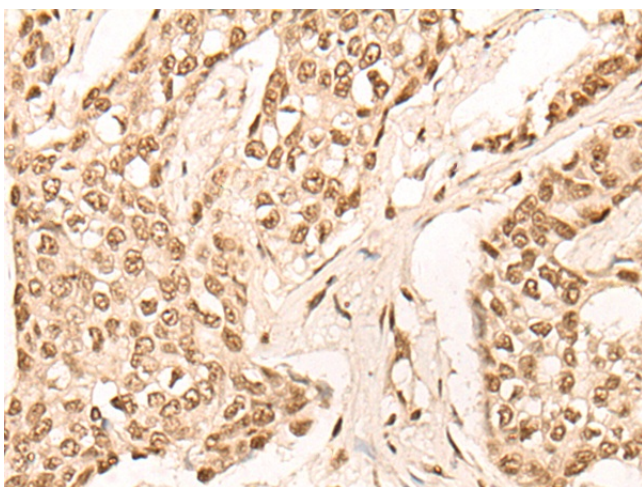
Gel: 8%SDS-PAGE
 Lysate: 40 µg
 Lane 1-5: Raji
 HeLa
 A549
 HEPG2 and 231 cell lysates
 Primary antibody: TA370180 (EIF4A3 Antibody) at dilution 1/500
 Secondary antibody: Goat anti rabbit IgG at 1/8000 dilution
 Exposure time: 15 seconds



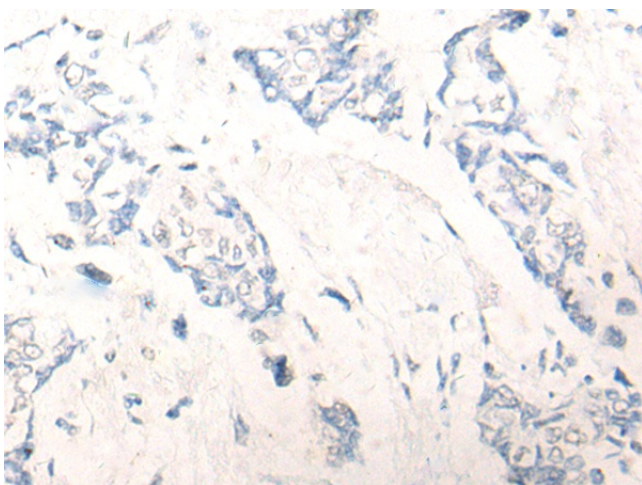
Immunohistochemistry of paraffin-embedded Human esophagus cancer tissue using TA370180 (EIF4A3 Antibody) at dilution 1/45 (Original magnification: ×200)



Immunohistochemistry of paraffin-embedded Human esophagus cancer tissue using TA370180 (EIF4A3 Antibody) at dilution 1/45, treated with fusion protein. (Original magnification: $\times 200$)



Immunohistochemistry of paraffin-embedded Human breast cancer tissue using TA370180 (EIF4A3 Antibody) at dilution 1/45 (Original magnification: $\times 200$)



Immunohistochemistry of paraffin-embedded Human breast cancer tissue using TA370180 (EIF4A3 Antibody) at dilution 1/45, treated with fusion protein. (Original magnification: $\times 200$)