

Product datasheet for **TA370177**

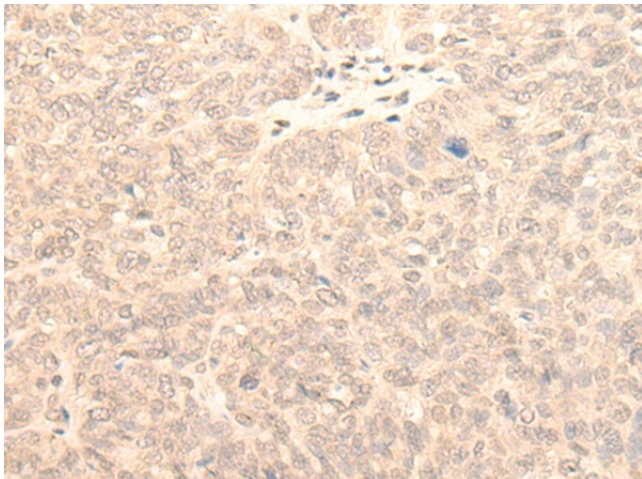
KLHDC2 Rabbit Polyclonal Antibody

Product data:

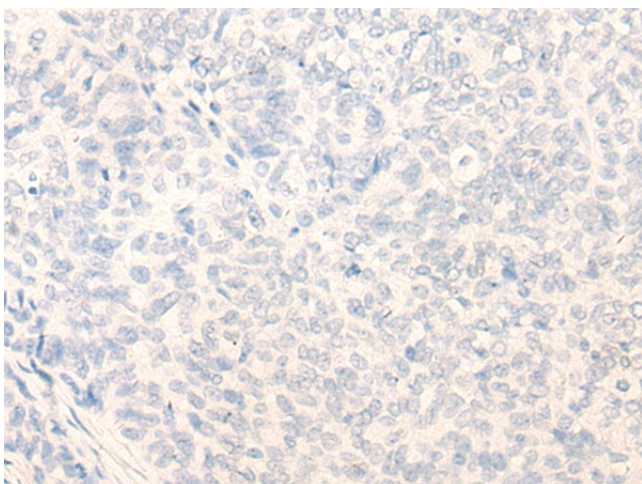
Product Type:	Primary Antibodies
Applications:	IHC
Recommended Dilution:	IHC: 30-150 Positive control: Human ovarian cancer Predicted cell location: Nucleus
Reactivity:	Human, Mouse, Rat
Host:	Rabbit
Isotype:	IgG
Clonality:	Polyclonal
Immunogen:	Fusion protein of human KLHDC2
Formulation:	pH7.4 PBS, 0.05% NaN ₃ , 40% Glycerol
Concentration:	lot specific
Purification:	Antigen affinity purification
Conjugation:	Unconjugated
Storage:	Store at -20°C.
Stability:	1 year
Gene Name:	kelch domain containing 2
Database Link:	Entrez Gene 23588 Human Q9Y2U9
Background:	Represses CREB3-mediated transcription by interfering with CREB3-DNA binding.
Synonyms:	HCA33; HCLP-1; LCP



[View online »](#)

Product images:

Immunohistochemistry of paraffin-embedded Human ovarian cancer tissue using TA370177 (KLHDC2 Antibody) at dilution 1/20 (Original magnification: $\times 200$)



Immunohistochemistry of paraffin-embedded Human ovarian cancer tissue using TA370177 (KLHDC2 Antibody) at dilution 1/20, treated with fusion protein. (Original magnification: $\times 200$)