

## Product datasheet for **TA370172**

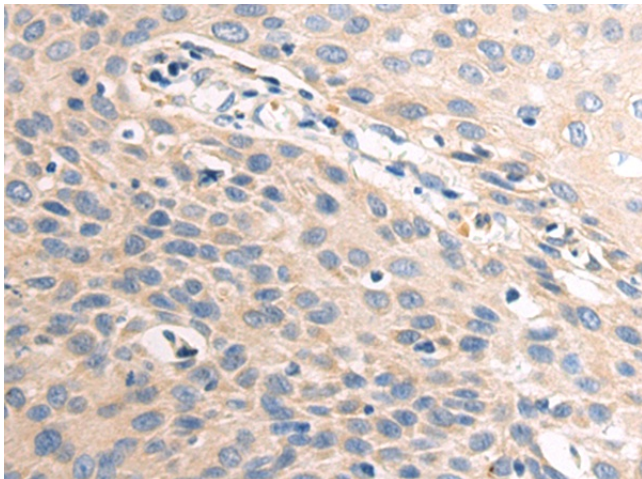
### TCN2 Rabbit Polyclonal Antibody

#### Product data:

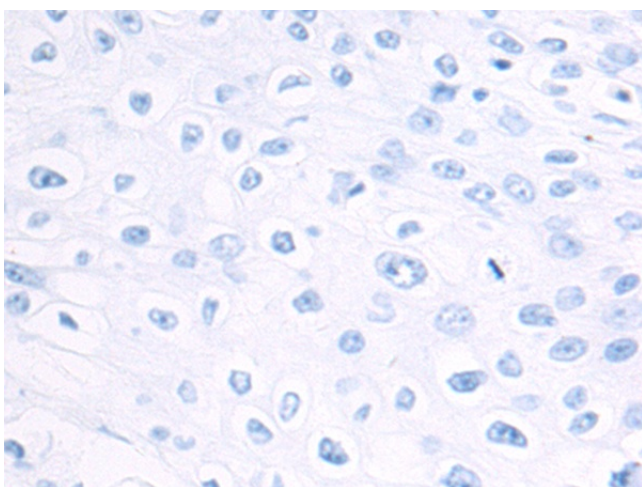
Product Type:	Primary Antibodies
Applications:	IHC
Recommended Dilution:	IHC: 50-200 Positive control: Human esophagus cancer Predicted cell location: Secreted
Reactivity:	Human
Host:	Rabbit
Isotype:	IgG
Clonality:	Polyclonal
Immunogen:	Fusion protein of human TCN2
Formulation:	pH7.4 PBS, 0.05% NaN <sub>3</sub> , 40% Glycerol
Concentration:	lot specific
Purification:	Antigen affinity purification
Conjugation:	Unconjugated
Storage:	Store at -20°C.
Stability:	1 year
Gene Name:	transcobalamin 2
Database Link:	<a href="#">Entrez Gene 6948 Human P20062</a>
Background:	This gene encodes a member of the vitamin B12-binding protein family. This family of proteins, alternatively referred to as R binders, is expressed in various tissues and secretions. This plasma protein binds cobalamin and mediates the transport of cobalamin into cells. This protein and other mammalian cobalamin-binding proteins, such as transcobalamin I and gastric intrinsic factor, may have evolved by duplication of a common ancestral gene. Alternative splicing results in multiple transcript variants.
Synonyms:	D22S676; D22S750; TC-2; TC2; TCII



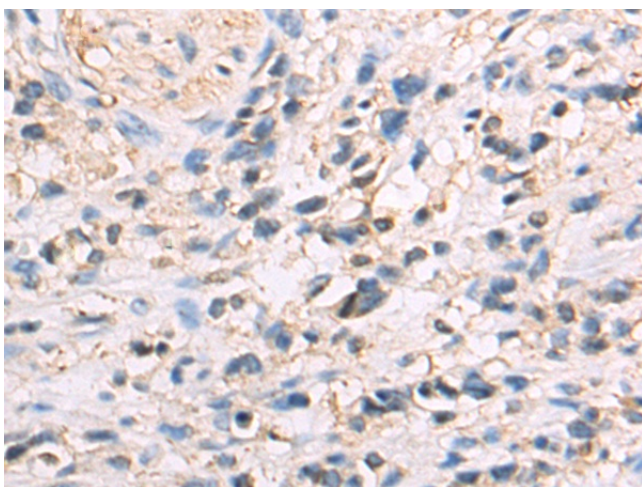
[View online »](#)

**Product images:**

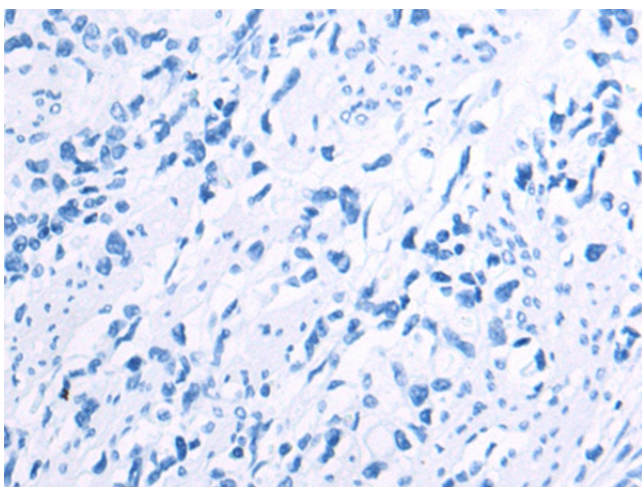
Immunohistochemistry of paraffin-embedded Human esophagus cancer tissue using TA370172 (TCN2 Antibody) at dilution 1/80 (Original magnification:  $\times 200$ )



Immunohistochemistry of paraffin-embedded Human esophagus cancer tissue using TA370172 (TCN2 Antibody) at dilution 1/80, treated with fusion protein. (Original magnification:  $\times 200$ )



Immunohistochemistry of paraffin-embedded Human gastric cancer tissue using TA370172 (TCN2 Antibody) at dilution 1/80 (Original magnification:  $\times 200$ )



Immunohistochemistry of paraffin-embedded Human gastric cancer tissue using TA370172 (TCN2 Antibody) at dilution 1/80, treated with fusion protein. (Original magnification:  $\times 200$ )