

## Product datasheet for **TA370169S**

### **HENMT1 Rabbit Polyclonal Antibody**

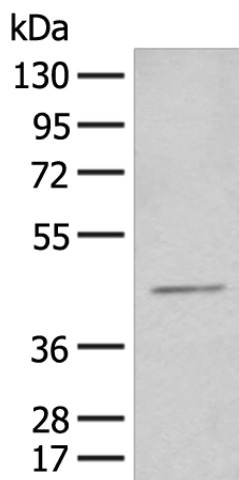
#### **Product data:**

Product Type:	Primary Antibodies
Applications:	IHC, WB
Recommended Dilution:	WB: 500-2000 WB positive control: HEPG2 cell lysate IHC: 30-150 Positive control: Human kidney cancer Predicted cell location: Nucleus
Reactivity:	Human
Host:	Rabbit
Isotype:	IgG
Clonality:	Polyclonal
Immunogen:	Fusion protein of human HENMT1
Formulation:	pH7.4 PBS, 0.05% NaN <sub>3</sub> , 40% Glycerol
Purification:	Antigen affinity purification
Conjugation:	Unconjugated
Storage:	Store at -20°C.
Stability:	1 year
Predicted Protein Size:	45 kDa
Gene Name:	HEN1 methyltransferase homolog 1
Database Link:	<a href="#">Entrez Gene 113802 Human Q5T8I9</a>
Background:	Methyltransferase that adds a 2'-O-methyl group at the 3'-end of piRNAs, a class of 24 to 30 nucleotide RNAs that are generated by a Dicer-independent mechanism and are primarily derived from transposons and other repeated sequence elements. This probably protects the 3'-end of piRNAs from uridylation activity and subsequent degradation. Stabilization of piRNAs is essential for gametogenesis.
Synonyms:	C1orf59; HEN1; RP11-256E16.2

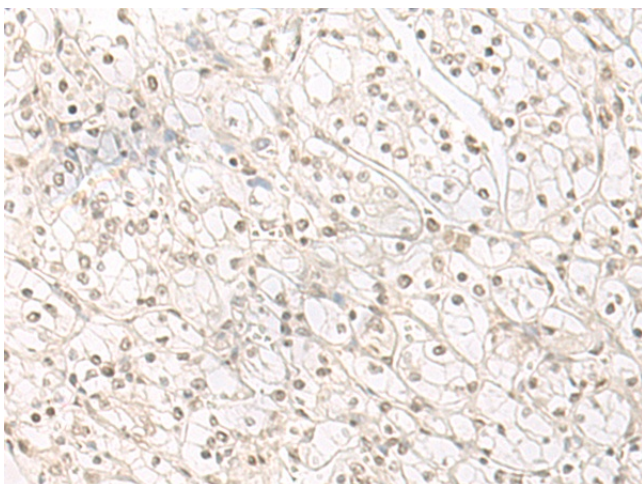


[View online »](#)

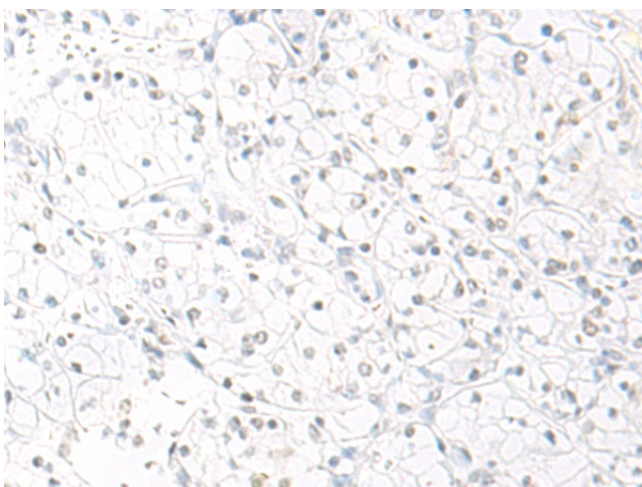
## Product images:



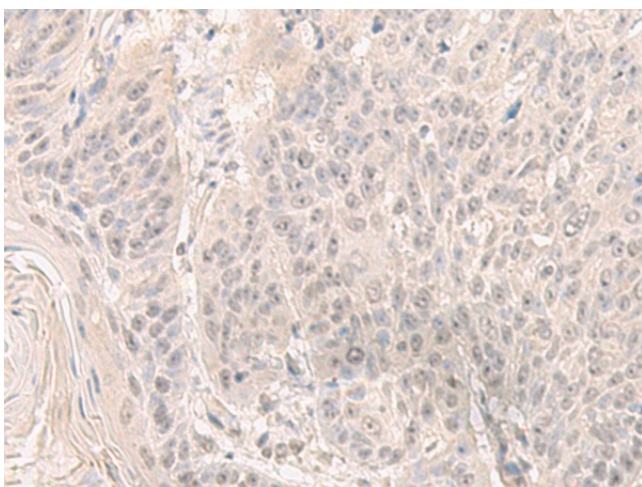
Gel: 8%SDS-PAGE  
 Lysate: 40 µg  
 Lane: HEPG2 cell lysate  
 Primary antibody: [TA370169] (HENMT1 Antibody) at dilution 1/500  
 Secondary antibody: Goat anti rabbit IgG at 1/8000 dilution  
 Exposure time: 1 minute



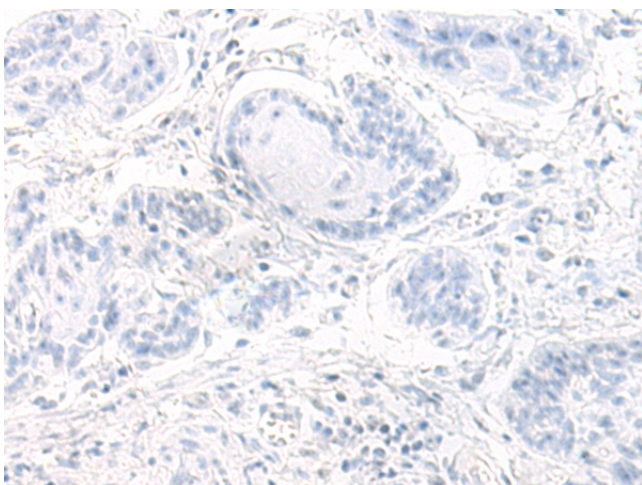
Immunohistochemistry of paraffin-embedded Human kidney cancer tissue using [TA370169] (HENMT1 Antibody) at dilution 1/30 (Original magnification: ×200)



Immunohistochemistry of paraffin-embedded Human kidney cancer tissue using [TA370169] (HENMT1 Antibody) at dilution 1/30, treated with fusion protein. (Original magnification: ×200)



Immunohistochemistry of paraffin-embedded Human esophagus cancer tissue using [TA370169] (HENMT1 Antibody) at dilution 1/30, treated with fusion protein. (Original magnification: ×200)



Immunohistochemistry of paraffin-embedded Human esophagus cancer tissue using [TA370169] (HENMT1 Antibody) at dilution 1/30, treated with fusion protein. (Original magnification: ×200)