

Product datasheet for **TA370169**

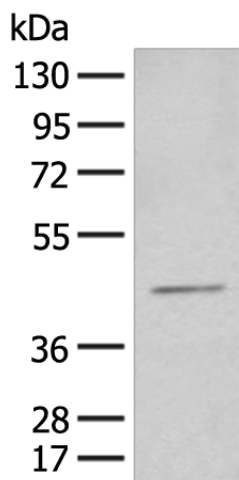
HENMT1 Rabbit Polyclonal Antibody

Product data:

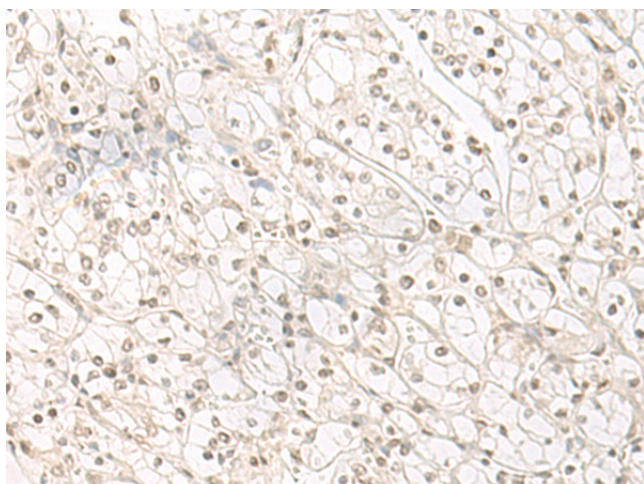
| | |
|--------------------------------|---|
| Product Type: | Primary Antibodies |
| Applications: | IHC, WB |
| Recommended Dilution: | WB: 500-2000 WB positive control: HEPG2 cell lysate IHC: 30-150 Positive control: Human kidney cancer Predicted cell location: Nucleus |
| Reactivity: | Human |
| Host: | Rabbit |
| Isotype: | IgG |
| Clonality: | Polyclonal |
| Immunogen: | Fusion protein of human HENMT1 |
| Formulation: | pH7.4 PBS, 0.05% NaN ₃ , 40% Glycerol |
| Concentration: | lot specific |
| Purification: | Antigen affinity purification |
| Conjugation: | Unconjugated |
| Storage: | Store at -20°C. |
| Stability: | 1 year |
| Predicted Protein Size: | 45 kDa |
| Gene Name: | HEN1 methyltransferase homolog 1 |
| Database Link: | Entrez Gene 113802 Human Q5T8I9 |
| Background: | Methyltransferase that adds a 2'-O-methyl group at the 3'-end of piRNAs, a class of 24 to 30 nucleotide RNAs that are generated by a Dicer-independent mechanism and are primarily derived from transposons and other repeated sequence elements. This probably protects the 3'-end of piRNAs from uridylation activity and subsequent degradation. Stabilization of piRNAs is essential for gametogenesis. |
| Synonyms: | C1orf59; HEN1; RP11-256E16.2 |



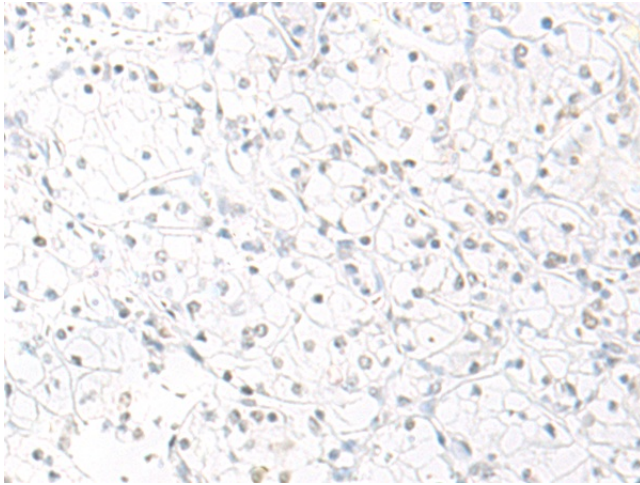
[View online »](#)

Product images:

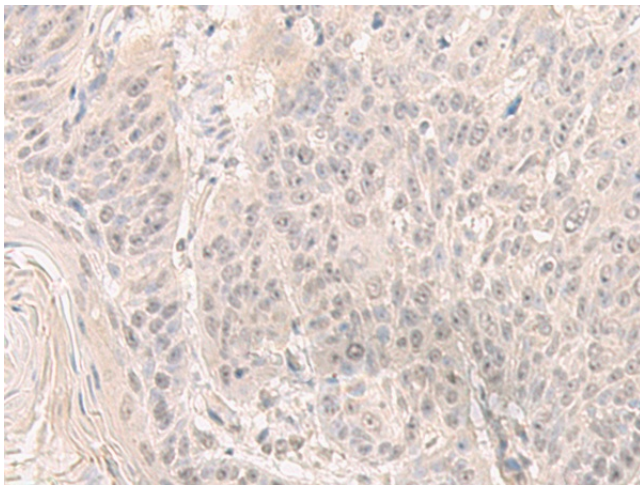
Gel: 8%SDS-PAGE
Lysate: 40 μ g
Lane: HEPG2 cell lysate
Primary antibody: TA370169 (HENMT1 Antibody) at dilution 1/500
Secondary antibody: Goat anti rabbit IgG at 1/8000 dilution
Exposure time: 1 minute



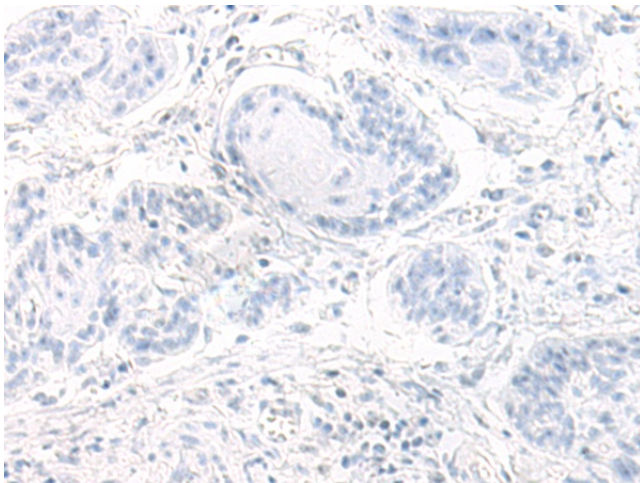
Immunohistochemistry of paraffin-embedded Human kidney cancer tissue using TA370169 (HENMT1 Antibody) at dilution 1/30 (Original magnification: \times 200)



Immunohistochemistry of paraffin-embedded Human kidney cancer tissue using TA370169 (HENMT1 Antibody) at dilution 1/30, treated with fusion protein. (Original magnification: $\times 200$)



Immunohistochemistry of paraffin-embedded Human esophagus cancer tissue using TA370169 (HENMT1 Antibody) at dilution 1/30 (Original magnification: $\times 200$)



Immunohistochemistry of paraffin-embedded Human esophagus cancer tissue using TA370169 (HENMT1 Antibody) at dilution 1/30, treated with fusion protein. (Original magnification: $\times 200$)