

Product datasheet for **TA370159**

ARMC8 Rabbit Polyclonal Antibody

Product data:

Product Type:	Primary Antibodies
Applications:	IHC
Recommended Dilution:	IHC: 40-200 Positive control: Human esophagus cancer Predicted cell location: Cytoplasm and Nucleus
Reactivity:	Human, Mouse
Host:	Rabbit
Isotype:	IgG
Clonality:	Polyclonal
Immunogen:	Fusion protein of human ARMC8
Formulation:	pH7.4 PBS, 0.05% NaN ₃ , 40% Glycerol
Concentration:	lot specific
Purification:	Antigen affinity purification
Conjugation:	Unconjugated
Storage:	Store at -20°C.
Stability:	1 year
Gene Name:	armadillo repeat containing 8
Database Link:	Entrez Gene 25852 Human Q8IUR7



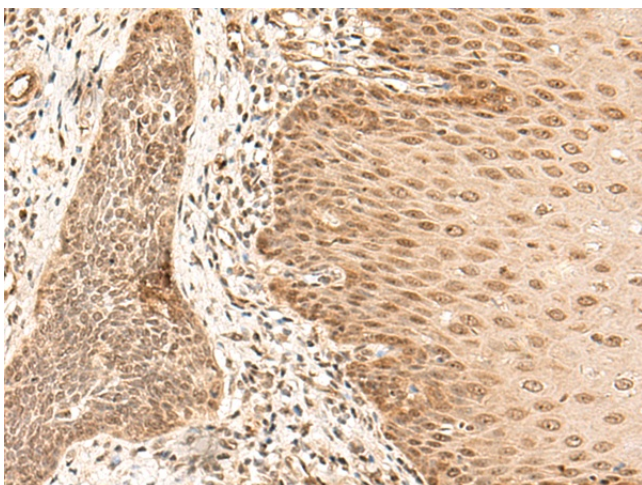
[View online »](#)

Background:

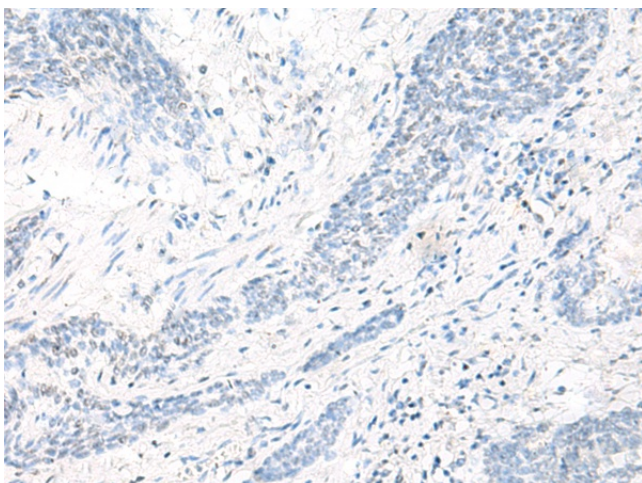
The armadillo (ARM) repeat family of proteins are related to the *Drosophila melanogaster* armadillo protein, a protein essential for wingless signal transduction. ARM proteins are involved in a variety of processes such as cell migration, cell proliferation, tissue maintenance and tumorigenesis, and they also function in signal transduction and the maintenance of overall cell structure. ARMC8 (armadillo repeat containing 8), also known as S863-2, is a 673 amino acid protein that contains 14 ARM repeats, suggesting a role in signal transduction events throughout the cell. Six isoforms of ARMC8 are expressed due to alternative splicing events. The gene encoding ARMC8 maps to human chromosome 3, which houses over 1,100 genes, including a chemokine receptor (CKR) gene cluster and a variety of human cancer-related gene loci.

Synonyms:

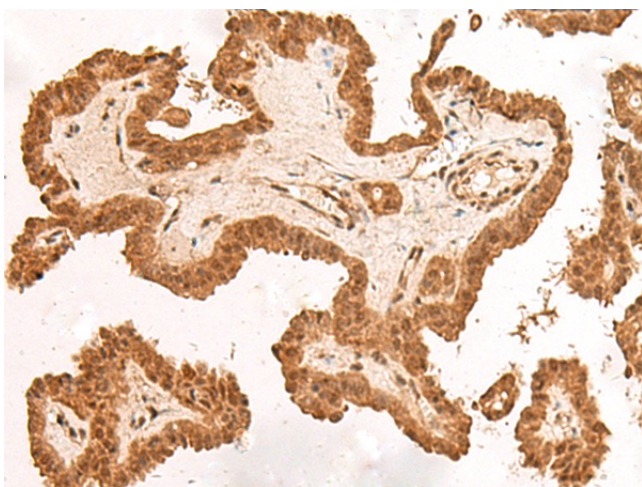
DKFZP434A043; HSPC056; MGC4880; MGC10058; S863-2

Product images:

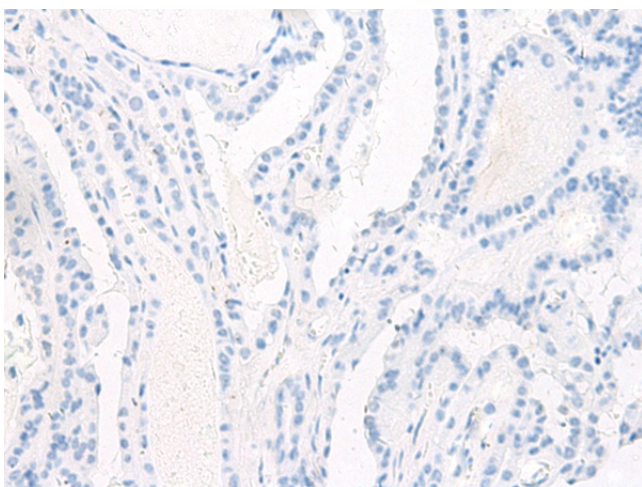
Immunohistochemistry of paraffin-embedded Human esophagus cancer tissue using TA370159 (ARMC8 Antibody) at dilution 1/40 (Original magnification: $\times 200$)



Immunohistochemistry of paraffin-embedded Human esophagus cancer tissue using TA370159 (ARMC8 Antibody) at dilution 1/40, treated with fusion protein. (Original magnification: $\times 200$)



Immunohistochemistry of paraffin-embedded Human thyroid cancer tissue using TA370159 (ARMC8 Antibody) at dilution 1/40 (Original magnification: $\times 200$)



Immunohistochemistry of paraffin-embedded Human thyroid cancer tissue using TA370159 (ARMC8 Antibody) at dilution 1/40, treated with fusion protein. (Original magnification: $\times 200$)