

## Product datasheet for **TA370158S**

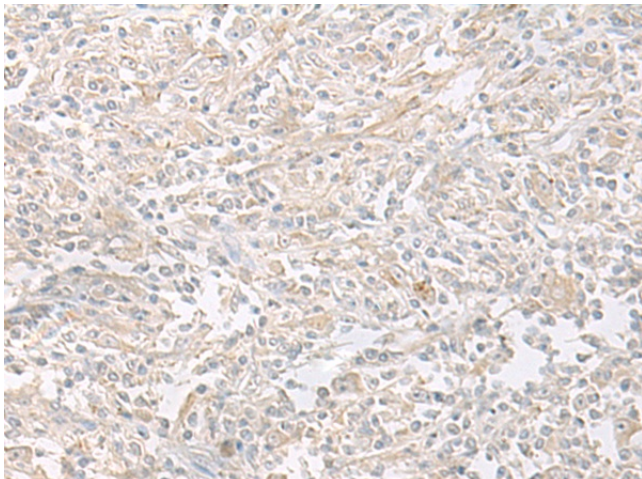
### ERGIC3 Rabbit Polyclonal Antibody

#### Product data:

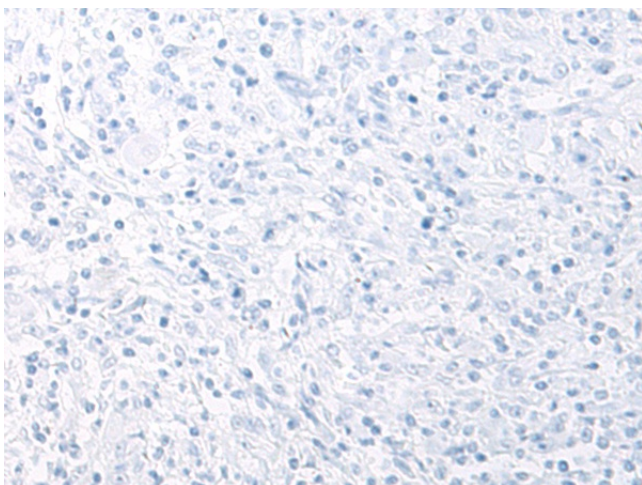
Product Type:	Primary Antibodies
Applications:	IHC
Recommended Dilution:	IHC: 30-150 Positive control: Human liver cancer Predicted cell location: Cytoplasm
Reactivity:	Human, Mouse
Host:	Rabbit
Isotype:	IgG
Clonality:	Polyclonal
Immunogen:	Fusion protein of human ERGIC3
Formulation:	pH7.4 PBS, 0.05% NaN <sub>3</sub> , 40% Glycerol
Purification:	Antigen affinity purification
Conjugation:	Unconjugated
Storage:	Store at -20°C.
Stability:	1 year
Gene Name:	ERGIC and golgi 3
Database Link:	<a href="#">Entrez Gene 51614 Human Q9Y282</a>
Background:	Possible role in transport between endoplasmic reticulum and Golgi.
Synonyms:	C20orf47; CGI-54; dj477O4.2; Erv46; NY-BR-84; PRO0989; SDBCAG84



[View online »](#)

**Product images:**

Immunohistochemistry of paraffin-embedded Human liver cancer tissue using [TA370158] (ERGIC3 Antibody) at dilution 1/35 (Original magnification:  $\times 200$ )



Immunohistochemistry of paraffin-embedded Human liver cancer tissue using [TA370158] (ERGIC3 Antibody) at dilution 1/35, treated with fusion protein. (Original magnification:  $\times 200$ )