

## Product datasheet for **TA370156**

### PISD Rabbit Polyclonal Antibody

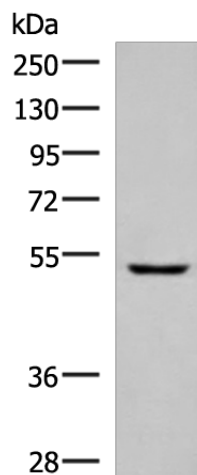
#### Product data:

|                         |   |
|-------------------------|---|
| Product Type:           | Primary Antibodies  |
| Applications:           | WB  |
| Recommended Dilution:   | WB: 500-2000<br>WB positive control: Human fetal liver tissue lysate  |
| Reactivity:             | Human, Mouse, Rat   |
| Host:                   | Rabbit  |
| Isotype:                | IgG   |
| Clonality:              | Polyclonal  |
| Immunogen:              | Fusion protein of human PISD  |
| Formulation:            | pH7.4 PBS, 0.05% NaN <sub>3</sub> , 40% Glycerol  |
| Concentration:          | lot specific  |
| Purification:           | Antigen affinity purification   |
| Conjugation:            | Unconjugated  |
| Storage:                | Store at -20°C.   |
| Stability:              | 1 year  |
| Predicted Protein Size: | 47 kDa  |
| Gene Name:              | phosphatidylserine decarboxylase  |
| Database Link:          | <a href="#">Entrez Gene 23761 Human Q9UG56</a>  |
| Background:             | The protein encoded by this gene catalyzes the conversion of phosphatidylserine to phosphatidylethanolamine in the inner mitochondrial membrane. The encoded protein is active in phospholipid metabolism and interorganelle trafficking of phosphatidylserine. |
| Synonyms:               | DJ858B16; dj858B16.2; DKFZp566G2246; OTTHUMP00000063301; PSD; PSDC; PSSC  |



[View online »](#)

## Product images:



Gel: 8%SDS-PAGE  
Lysate: 40  $\mu$ g  
Lane: Human fetal liver tissue lysate  
Primary antibody: TA370156 (PISD Antibody) at dilution 1/600  
Secondary antibody: Goat anti rabbit IgG at 1/5000 dilution  
Exposure time: 3 minutes