

## Product datasheet for **TA370143S**

### ROM1 Rabbit Polyclonal Antibody

#### Product data:

Product Type:	Primary Antibodies
Applications:	IHC, WB
Recommended Dilution:	WB: 500-2000 WB positive control: TM4, 293T, 231 and Hela cell lysates IHC: 30-150 Positive control: Human liver cancer Predicted cell location: Cell membrane
Reactivity:	Human, Mouse
Host:	Rabbit
Isotype:	IgG
Clonality:	Polyclonal
Immunogen:	Fusion protein of human ROM1
Formulation:	pH7.4 PBS, 0.05% NaN <sub>3</sub> , 40% Glycerol
Purification:	Antigen affinity purification
Conjugation:	Unconjugated
Storage:	Store at -20°C.
Stability:	1 year
Predicted Protein Size:	37 kDa
Gene Name:	retinal outer segment membrane protein 1
Database Link:	<a href="#">Entrez Gene 6094 Human Q03395</a>

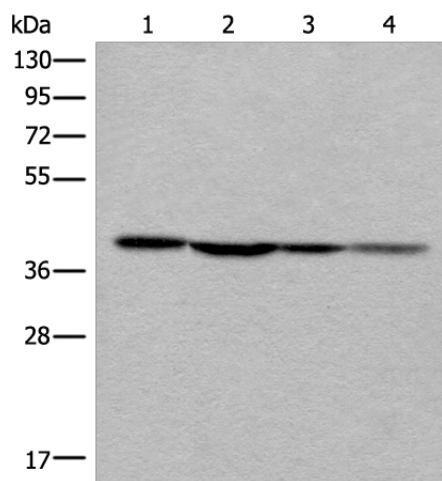
**Background:** This gene is a member of a photoreceptor-specific gene family and encodes an integral membrane protein found in the photoreceptor disk rim of the eye. This protein can form homodimers or can heterodimerize with another photoreceptor, retinal degeneration slow (RDS). It is essential for disk morphogenesis, and may also function as an adhesion molecule involved in the stabilization and compaction of outer segment disks or in the maintenance of the curvature of the rim. Certain defects in this gene have been associated with the degenerative eye disease retinitis pigmentosa.



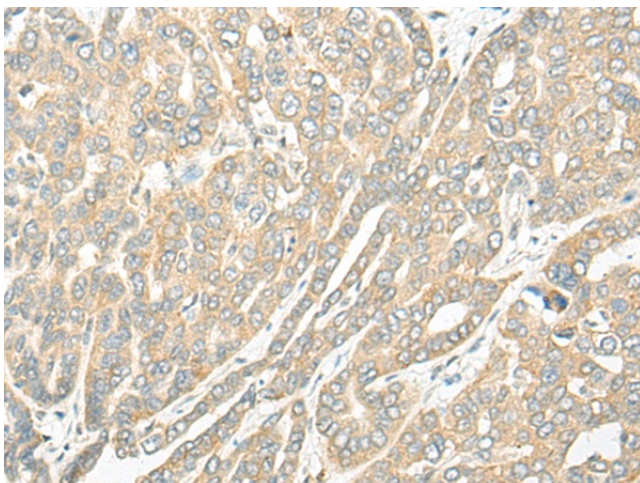
[View online »](#)

**Synonyms:** ROM; ROSP1; RP7; Tetraspanin-23; Tspan-23; TSPAN23

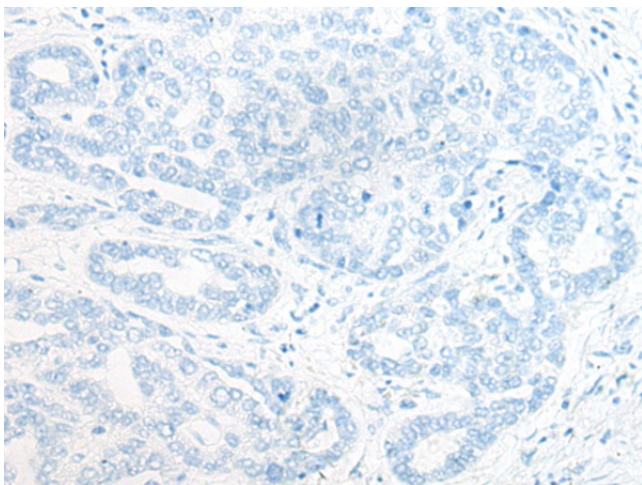
**Product images:**



Gel: 8%SDS-PAGE  
Lysate: 40 µg  
Lane 1-4: TM4  
293T  
231 and Hela cell lysates  
Primary antibody: [TA370143] (ROM1 Antibody)  
at dilution 1/400  
Secondary antibody: Goat anti rabbit IgG at  
1/8000 dilution  
Exposure time: 5 seconds



Immunohistochemistry of paraffin-embedded  
Human liver cancer tissue using [TA370143]  
(ROM1 Antibody) at dilution 1/25 (Original  
magnification: ×200)



Immunohistochemistry of paraffin-embedded Human liver cancer tissue using [TA370143] (ROM1 Antibody) at dilution 1/25, treated with fusion protein. (Original magnification: ×200)