

## Product datasheet for **TA370140S**

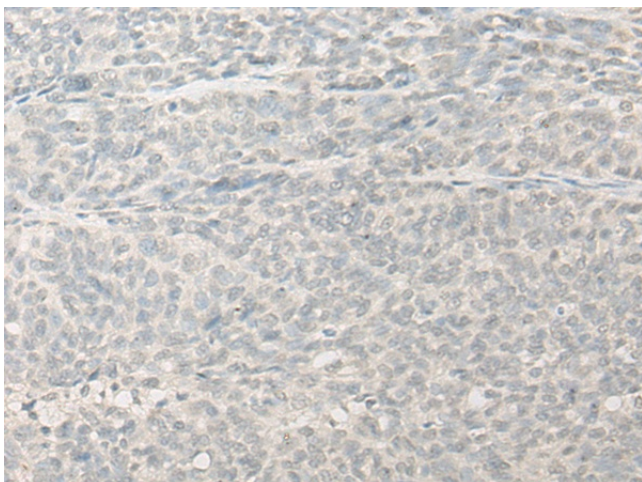
### RTDR1 (RSPH14) Rabbit Polyclonal Antibody

#### Product data:

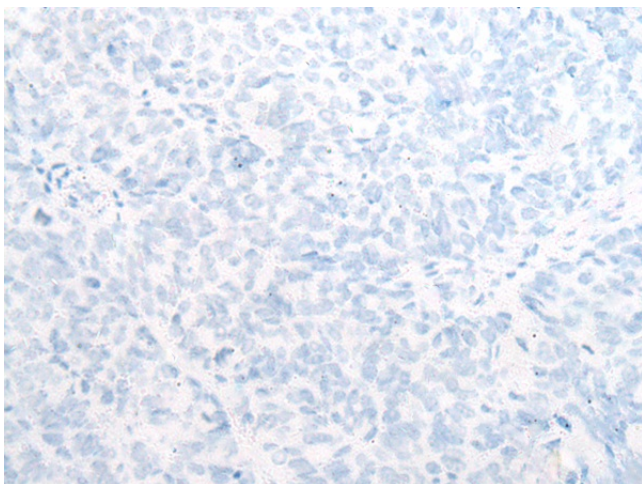
|                       |  |
|-----------------------|--|
| Product Type:         | Primary Antibodies   |
| Applications:         | IHC  |
| Recommended Dilution: | IHC: 25-100<br>Positive control: Human ovarian cancer<br>Predicted cell location: Cytoplasm and Nucleus  |
| Reactivity:           | Human  |
| Host:                 | Rabbit   |
| Isotype:              | IgG  |
| Clonality:            | Polyclonal   |
| Immunogen:            | Fusion protein of human RSPH14   |
| Formulation:          | pH7.4 PBS, 0.05% NaN <sub>3</sub> , 40% Glycerol   |
| Purification:         | Antigen affinity purification  |
| Conjugation:          | Unconjugated   |
| Storage:              | Store at -20°C.  |
| Stability:            | 1 year   |
| Gene Name:            | radial spoke head 14 homolog   |
| Database Link:        | <a href="#">Entrez Gene 27156 Human Q9UHP6</a>   |
| Background:           | This gene encodes a protein with no known function but with slight similarity to a yeast vacuolar protein. The gene is located in a region deleted in pediatric rhabdoid tumors of the brain, kidney and soft tissues, but mutations in this gene have not been associated with the disease. |



[View online »](#)

**Product images:**

Immunohistochemistry of paraffin-embedded Human ovarian cancer tissue using [TA370140] (RSPH14 Antibody) at dilution 1/25 (Original magnification: ×200)



Immunohistochemistry of paraffin-embedded Human ovarian cancer tissue using [TA370140] (RSPH14 Antibody) at dilution 1/25, treated with fusion protein. (Original magnification: ×200)