

## Product datasheet for **TA370131S**

### MAGEA11 Rabbit Polyclonal Antibody

#### Product data:

Product Type:	Primary Antibodies
Applications:	IHC, WB
Recommended Dilution:	WB: 200-1000 WB positive control: K562□293T and A549 cell lysates IHC: 20-100 Positive control: Human liver cancer Predicted cell location: Cytoplasm
Reactivity:	Human
Host:	Rabbit
Isotype:	IgG
Clonality:	Polyclonal
Immunogen:	Fusion protein of human MAGEA11
Formulation:	pH7.4 PBS, 0.05% NaN <sub>3</sub> , 40% Glycerol
Purification:	Antigen affinity purification
Conjugation:	Unconjugated
Storage:	Store at -20°C.
Stability:	1 year
Predicted Protein Size:	48 kDa
Gene Name:	MAGE family member A11
Database Link:	<a href="#">Entrez Gene 4110 Human P43364</a>

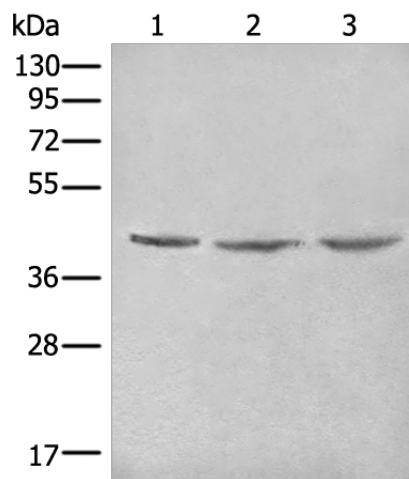
**Background:** This gene is a member of the MAGEA gene family. The members of this family encode proteins with 50 to 80% sequence identity to each other. The promoters and first exons of the MAGEA genes show considerable variability, suggesting that the existence of this gene family enables the same function to be expressed under different transcriptional controls. The MAGEA genes are clustered at chromosomal location Xq28. They have been implicated in some hereditary disorders, such as dyskeratosis congenita. Two transcript variants encoding different isoforms have been found for this gene.



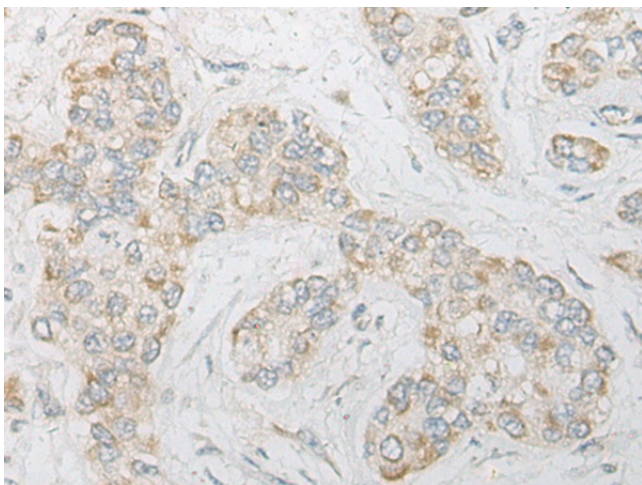
[View online »](#)

Synonyms: CT1.11; MAGE-11; MAGE11; MAGEA-11; MGC10511

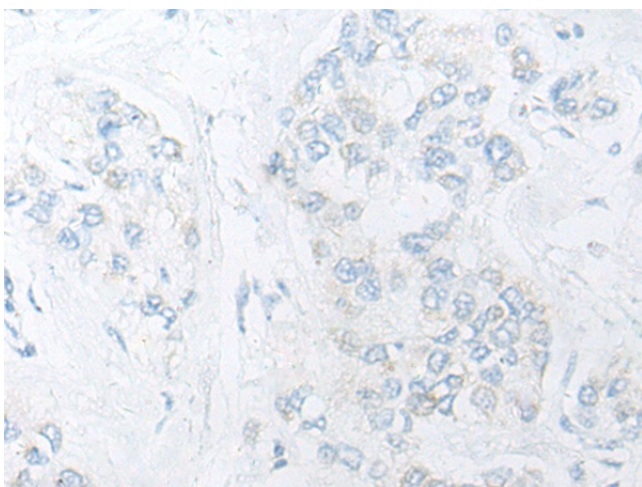
### Product images:



Gel: 8%SDS-PAGE  
Lysate: 40 µg  
Lane 1-3: K562  
293T and A549 cell lysates  
Primary antibody: [TA370131] (MAGEA11 Antibody) at dilution 1/200  
Secondary antibody: Goat anti rabbit IgG at 1/8000 dilution  
Exposure time: 10 seconds



Immunohistochemistry of paraffin-embedded Human liver cancer tissue using [TA370131] (MAGEA11 Antibody) at dilution 1/20 (Original magnification: ×200)



Immunohistochemistry of paraffin-embedded Human liver cancer tissue using [TA370131] (MAGEA11 Antibody) at dilution 1/20, treated with fusion protein. (Original magnification: ×200)