

Product datasheet for **TA370128S**

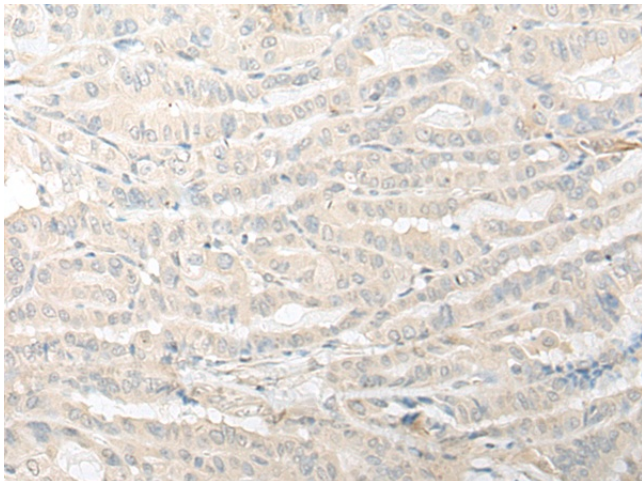
C7orf42 (TMEM248) Rabbit Polyclonal Antibody

Product data:

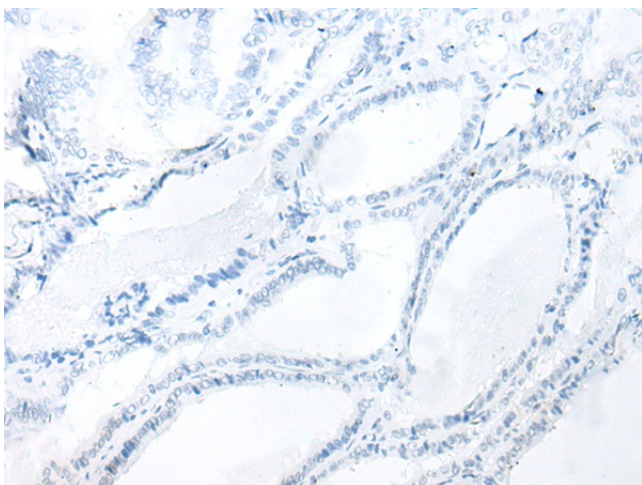
Product Type:	Primary Antibodies
Applications:	IHC
Recommended Dilution:	IHC: 30-150 Positive control: Human thyroid cancer Predicted cell location: Cytoplasm
Reactivity:	Human, Mouse, Rat
Host:	Rabbit
Isotype:	IgG
Clonality:	Polyclonal
Immunogen:	Fusion protein of human TMEM248
Formulation:	pH7.4 PBS, 0.05% NaN ₃ , 40% Glycerol
Purification:	Antigen affinity purification
Conjugation:	Unconjugated
Storage:	Store at -20°C.
Stability:	1 year
Gene Name:	transmembrane protein 248
Database Link:	Entrez Gene 55069 Human Q9NWD8
Background:	The function of this protein remains unknown.
Synonyms:	0610007L01Rik; A930023A16Rik; AW557951; G430067H08Rik; Tmem248



[View online »](#)

Product images:

Immunohistochemistry of paraffin-embedded Human thyroid cancer tissue using [TA370128] (TMEM248 Antibody) at dilution 1/30 (Original magnification: $\times 200$)



Immunohistochemistry of paraffin-embedded Human thyroid cancer tissue using [TA370128] (TMEM248 Antibody) at dilution 1/30, treated with fusion protein. (Original magnification: $\times 200$)