

## Product datasheet for **TA370128**

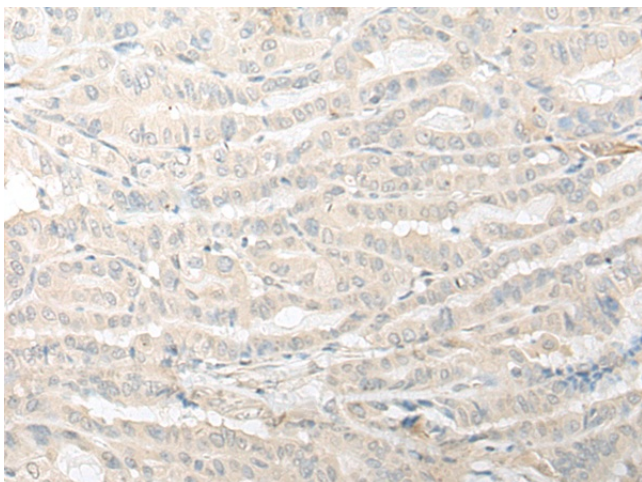
### **C7orf42 (TMEM248) Rabbit Polyclonal Antibody**

#### **Product data:**

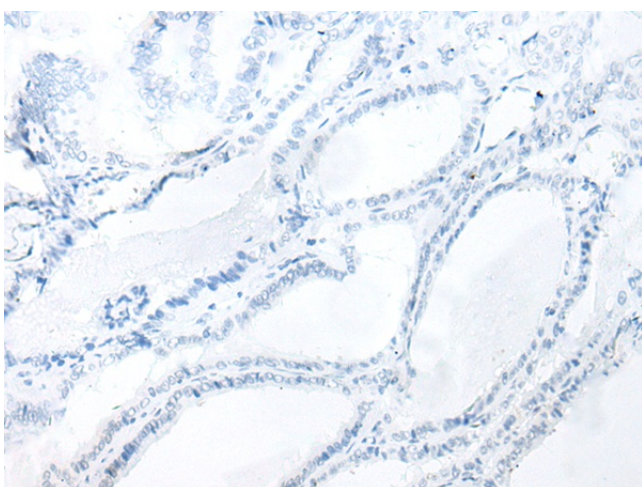
Product Type:	Primary Antibodies
Applications:	IHC
Recommended Dilution:	IHC: 30-150 Positive control: Human thyroid cancer Predicted cell location: Cytoplasm
Reactivity:	Human, Mouse, Rat
Host:	Rabbit
Isotype:	IgG
Clonality:	Polyclonal
Immunogen:	Fusion protein of human TMEM248
Formulation:	pH7.4 PBS, 0.05% NaN <sub>3</sub> , 40% Glycerol
Concentration:	lot specific
Purification:	Antigen affinity purification
Conjugation:	Unconjugated
Storage:	Store at -20°C.
Stability:	1 year
Gene Name:	transmembrane protein 248
Database Link:	<a href="#">Entrez Gene 55069 Human Q9NWD8</a>
Background:	The function of this protein remains unknown.
Synonyms:	0610007L01Rik; A930023A16Rik; AW557951; G430067H08Rik; Tmem248



[View online »](#)

**Product images:**

Immunohistochemistry of paraffin-embedded Human thyroid cancer tissue using TA370128 (TMEM248 Antibody) at dilution 1/30 (Original magnification:  $\times 200$ )



Immunohistochemistry of paraffin-embedded Human thyroid cancer tissue using TA370128 (TMEM248 Antibody) at dilution 1/30, treated with fusion protein. (Original magnification:  $\times 200$ )