

## Product datasheet for **TA370127S**

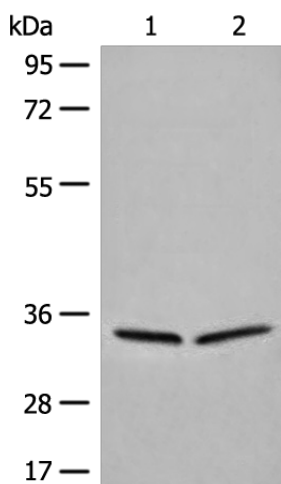
### **DIMT1L (DIMT1) Rabbit Polyclonal Antibody**

#### **Product data:**

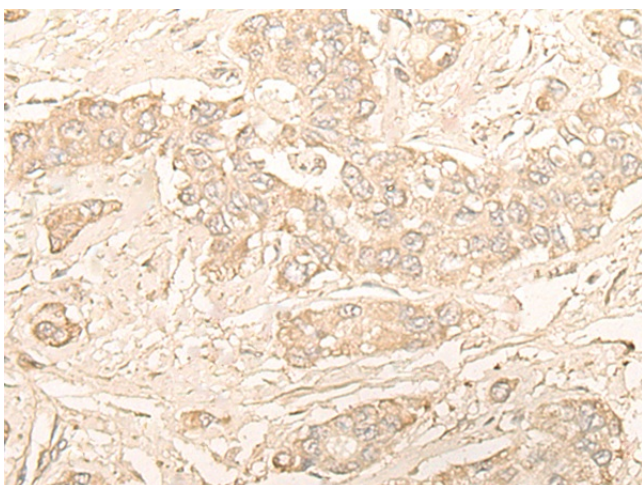
Product Type:	Primary Antibodies
Applications:	IHC, WB
Recommended Dilution:	WB: 500-2000 WB positive control: 231 and Raji cell lysates IHC: 30-150 Positive control: Human liver cancer Predicted cell location: Cytoplasm and Nucleus
Reactivity:	Human, Mouse
Host:	Rabbit
Isotype:	IgG
Clonality:	Polyclonal
Immunogen:	Full length fusion protein
Formulation:	pH7.4 PBS, 0.05% NaN <sub>3</sub> , 40% Glycerol
Purification:	Antigen affinity purification
Conjugation:	Unconjugated
Storage:	Store at -20°C.
Stability:	1 year
Predicted Protein Size:	35 kDa
Gene Name:	DIM1 dimethyladenosine transferase 1 homolog
Database Link:	<a href="#">Entrez Gene 27292 Human Q9UNQ2</a>
Background:	Specifically dimethylates two adjacent adenosines in the loop of a conserved hairpin near the 3'-end of 18S rRNA in the 40S particle.
Synonyms:	1500031M22Rik; AV111347; Dimt1l; RGD1311752

[View online »](#)

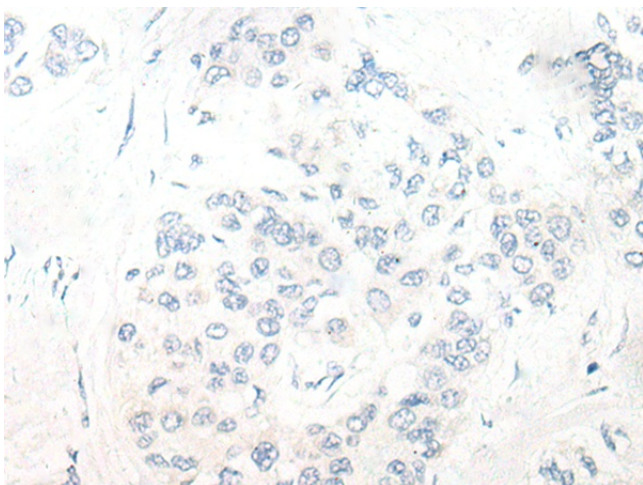
**Product images:**



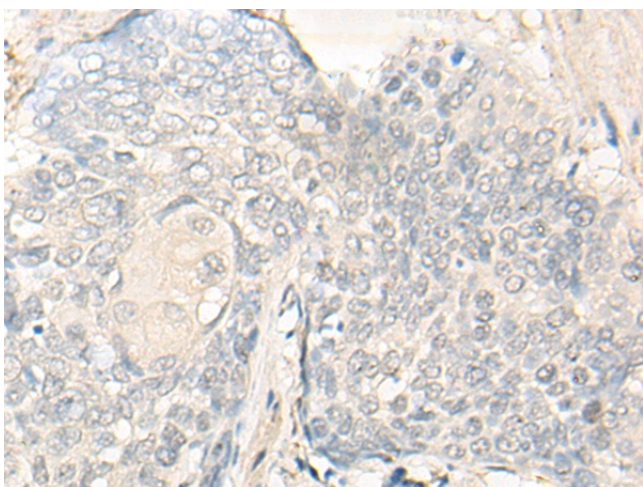
Gel: 8%SDS-PAGE  
 Lysate: 40 µg  
 Lane 1-2: 231 and Raji cell lysates  
 Primary antibody: [TA370127] (DIMT1 Antibody)  
 at dilution 1/450  
 Secondary antibody: Goat anti rabbit IgG at  
 1/8000 dilution  
 Exposure time: 2 seconds



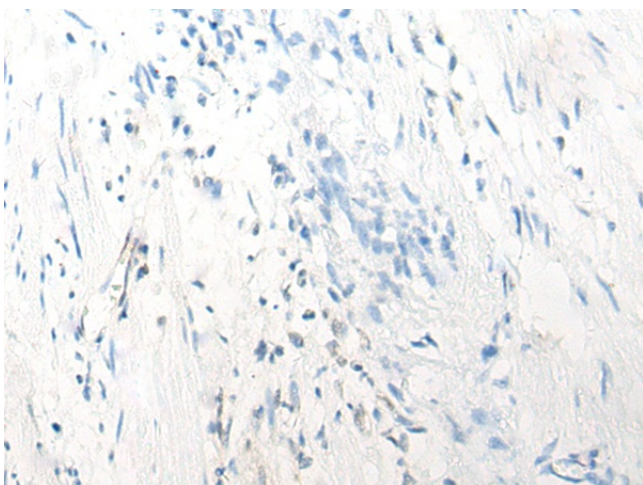
Immunohistochemistry of paraffin-embedded  
 Human liver cancer tissue using [TA370127]  
 (DIMT1 Antibody) at dilution 1/30 (Original  
 magnification: ×200)



Immunohistochemistry of paraffin-embedded Human liver cancer tissue using [TA370127] (DIMT1 Antibody) at dilution 1/30, treated with fusion protein. (Original magnification: ×200)



Immunohistochemistry of paraffin-embedded Human esophagus cancer tissue using [TA370127] (DIMT1 Antibody) at dilution 1/30, treated with fusion protein. (Original magnification: ×200)



Immunohistochemistry of paraffin-embedded Human esophagus cancer tissue using [TA370127] (DIMT1 Antibody) at dilution 1/30, treated with fusion protein. (Original magnification: ×200)