

Product datasheet for **TA370122S**

MRPL1 Rabbit Polyclonal Antibody

Product data:

Product Type:	Primary Antibodies
Applications:	IHC, WB
Recommended Dilution:	WB: 500-2000 WB positive control: K562□HEPG2□231 and Jurkat cell lysates IHC: 30-150 Positive control: Human tonsil Predicted cell location: Cytoplasm
Reactivity:	Human
Host:	Rabbit
Isotype:	IgG
Clonality:	Polyclonal
Immunogen:	Fusion protein of human MRPL1
Formulation:	pH7.4 PBS, 0.05% NaN ₃ , 40% Glycerol
Purification:	Antigen affinity purification
Conjugation:	Unconjugated
Storage:	Store at -20°C.
Stability:	1 year
Predicted Protein Size:	37 kDa
Gene Name:	mitochondrial ribosomal protein L1
Database Link:	Entrez Gene 65008 Human Q9BYD6



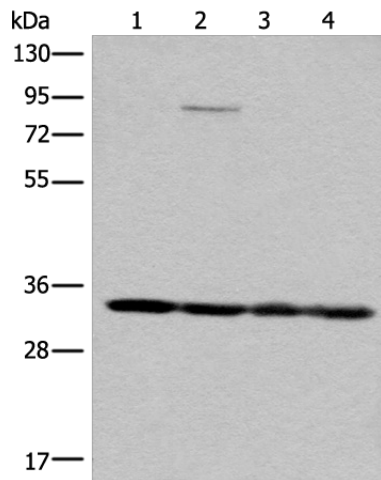
[View online »](#)

Background:

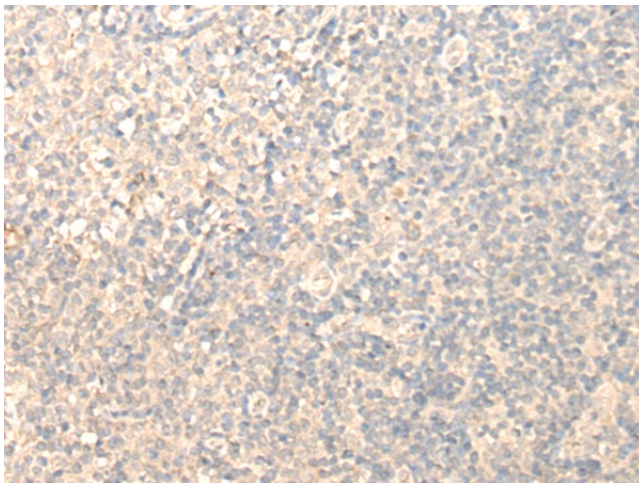
Mammalian mitochondrial ribosomal proteins are encoded by nuclear genes and help in protein synthesis within the mitochondrion. Mitochondrial ribosomes (mitoribosomes) consist of a small 28S subunit and a large 39S subunit. They have an estimated 75% protein to rRNA composition compared to prokaryotic ribosomes, where this ratio is reversed. Another difference between mammalian mitoribosomes and prokaryotic ribosomes is that the latter contain a 5S rRNA. Among different species, the proteins comprising the mitoribosome differ greatly in sequence, and sometimes in biochemical properties, which prevents easy recognition by sequence homology. This gene encodes a 39S subunit protein that belongs to the L1 ribosomal protein family.

Synonyms:

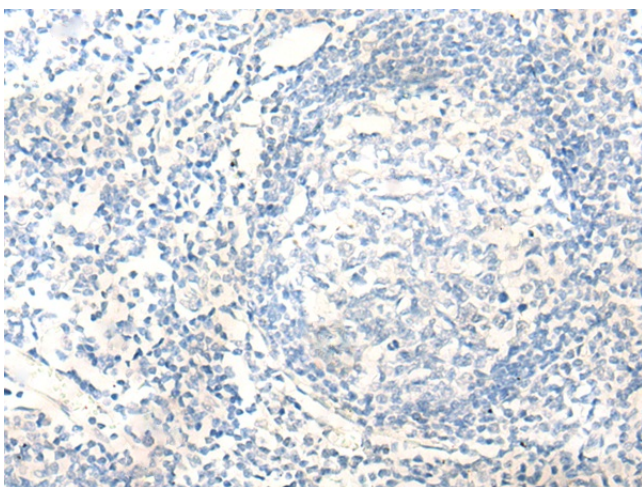
BM022; FLJ96680; L1MT; MRP-L1

Product images:


Gel: 8%SDS-PAGE
 Lysate: 40 µg
 Lane 1-4: K562
 HEPG2
 231 and Jurkat cell lysates
 Primary antibody: [TA370122] (MRPL1 Antibody)
 at dilution 1/350
 Secondary antibody: Goat anti rabbit IgG at
 1/8000 dilution
 Exposure time: 7 seconds



Immunohistochemistry of paraffin-embedded
 Human tonsil tissue using [TA370122] (MRPL1
 Antibody) at dilution 1/25 (Original magnification:
 ×200)



Immunohistochemistry of paraffin-embedded Human tonsil tissue using [TA370122] (MRPL1 Antibody) at dilution 1/25, treated with fusion protein. (Original magnification: x200)