

Product datasheet for **TA370121**

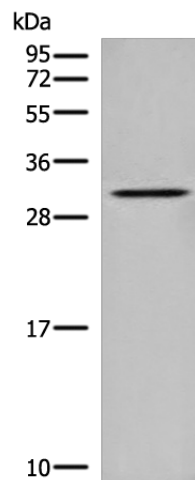
Deoxyribonuclease I like 1 (DNASE1L1) Rabbit Polyclonal Antibody

Product data:

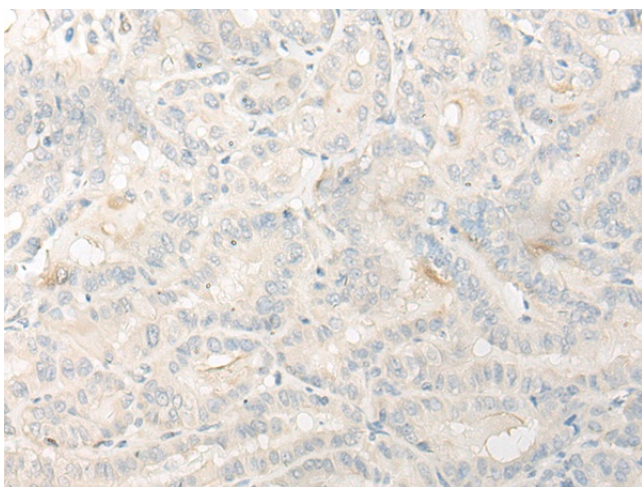
Product Type:	Primary Antibodies
Applications:	IHC, WB
Recommended Dilution:	WB: 200-1000 WB positive control: Human heart tissue lysate IHC: 30-150 Positive control: Human thyroid cancer Predicted cell location: Endoplasmic reticulum
Reactivity:	Human
Host:	Rabbit
Isotype:	IgG
Clonality:	Polyclonal
Immunogen:	Fusion protein of human DNASE1L1
Formulation:	pH7.4 PBS, 0.05% NaN ₃ , 40% Glycerol
Concentration:	lot specific
Purification:	Antigen affinity purification
Conjugation:	Unconjugated
Storage:	Store at -20°C.
Stability:	1 year
Predicted Protein Size:	34 kDa
Gene Name:	deoxyribonuclease I-like 1
Database Link:	Entrez Gene 1774 Human P49184
Background:	This gene encodes a deoxyribonuclease protein that shows high sequence similarity to DNase I. The encoded protein is localized to the endoplasmic reticulum and modified by N-linked glycosylation. Alternate transcriptional splice variants encoding the same protein have been observed.
Synonyms:	DNAS1L1; DNASEX; DNL1L; OTTHUMP00000031940; OTTHUMP00000032113; XIB



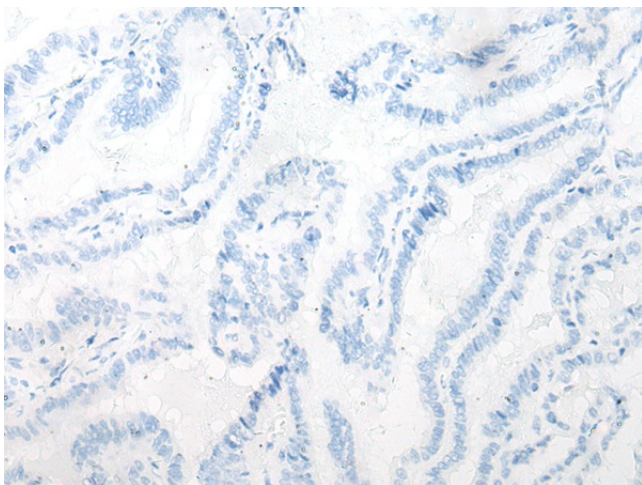
[View online »](#)

Product images:

Gel: 12%SDS-PAGE
Lysate: 40 µg
Lane: Human heart tissue lysate
Primary antibody: TA370121 (DNASE1L1 Antibody) at dilution 1/400
Secondary antibody: Goat anti rabbit IgG at 1/8000 dilution
Exposure time: 5 minutes



Immunohistochemistry of paraffin-embedded Human thyroid cancer tissue using TA370121 (DNASE1L1 Antibody) at dilution 1/30 (Original magnification: ×200)



Immunohistochemistry of paraffin-embedded Human thyroid cancer tissue using TA370121 (DNASE1L1 Antibody) at dilution 1/30, treated with fusion protein. (Original magnification: ×200)