

## Product datasheet for **TA370113S**

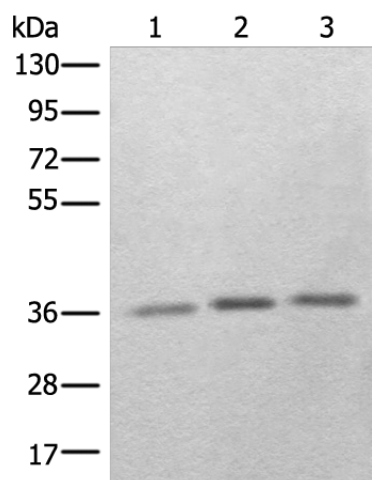
### **RBM11 Rabbit Polyclonal Antibody**

#### **Product data:**

Product Type:	Primary Antibodies
Applications:	IHC, WB
Recommended Dilution:	WB: 200-1000 WB positive control: Human kidney tissue□Human cerebella tissue and Human fetal brain tissue lysates IHC: 25-100 Positive control: Human ovarian cancer Predicted cell location: Nucleus
Reactivity:	Human
Host:	Rabbit
Isotype:	IgG
Clonality:	Polyclonal
Immunogen:	Fusion protein of human RBM11
Formulation:	pH7.4 PBS, 0.05% NaN <sub>3</sub> , 40% Glycerol
Purification:	Antigen affinity purification
Conjugation:	Unconjugated
Storage:	Store at -20°C.
Stability:	1 year
Predicted Protein Size:	32 kDa
Gene Name:	RNA binding motif protein 11
Database Link:	<a href="#">Entrez Gene 54033 Human P57052</a>
Background:	Tissue-specific splicing factor with potential implication in the regulation of alternative splicing during neuron and germ cell differentiation. Antagonizes SRSF1-mediated BCL-X splicing. May affect the choice of alternative 5' splice sites by binding to specific sequences in exons and antagonizing the SR protein SRSF1.
Synonyms:	RBM11



[View online »](#)

**Product images:**


Gel: 8%SDS-PAGE

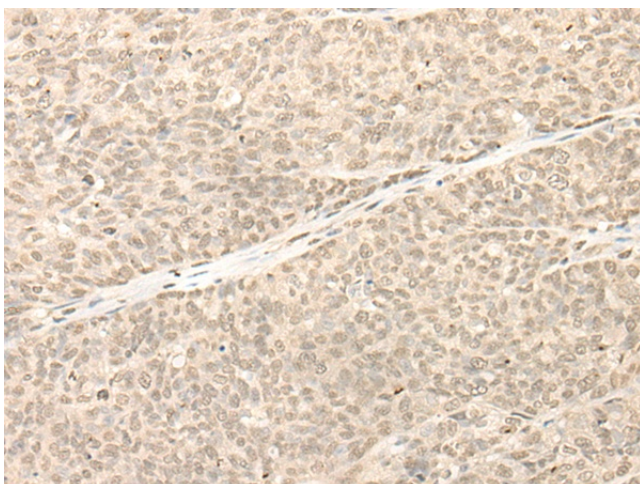
Lysate: 40 µg

Lane 1-3: Human kidney tissue  
Human cerebella tissue and Human fetal brain  
tissue lysates

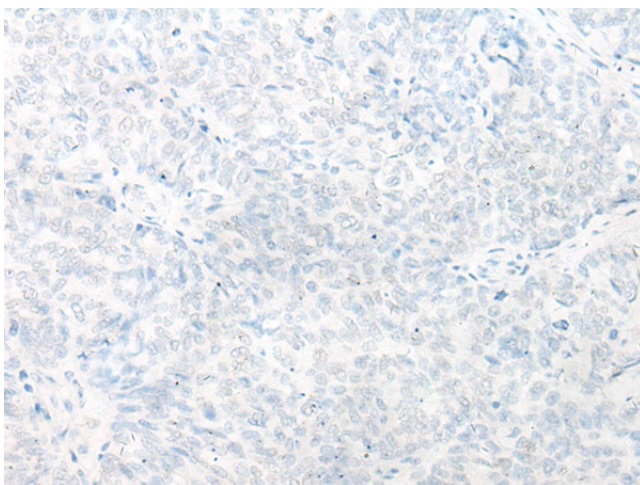
Primary antibody: [TA370113] (RBM11 Antibody)  
at dilution 1/250

Secondary antibody: Goat anti rabbit IgG at  
1/8000 dilution

Exposure time: 3 minutes



Immunohistochemistry of paraffin-embedded  
Human ovarian cancer tissue using [TA370113]  
(RBM11 Antibody) at dilution 1/20 (Original  
magnification: ×200)



Immunohistochemistry of paraffin-embedded  
Human ovarian cancer tissue using [TA370113]  
(RBM11 Antibody) at dilution 1/20, treated with  
fusion protein. (Original magnification: ×200)