

Product datasheet for **TA370113**

RBM11 Rabbit Polyclonal Antibody

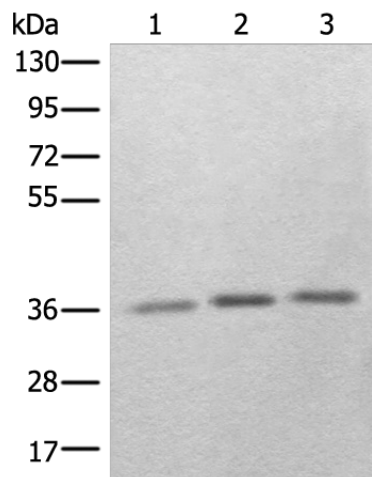
Product data:

Product Type:	Primary Antibodies
Applications:	IHC, WB
Recommended Dilution:	WB: 200-1000 WB positive control: Human kidney tissue□Human cerebella tissue and Human fetal brain tissue lysates IHC: 25-100 Positive control: Human ovarian cancer Predicted cell location: Nucleus
Reactivity:	Human
Host:	Rabbit
Isotype:	IgG
Clonality:	Polyclonal
Immunogen:	Fusion protein of human RBM11
Formulation:	pH7.4 PBS, 0.05% NaN ₃ , 40% Glycerol
Concentration:	lot specific
Purification:	Antigen affinity purification
Conjugation:	Unconjugated
Storage:	Store at -20°C.
Stability:	1 year
Predicted Protein Size:	32 kDa
Gene Name:	RNA binding motif protein 11
Database Link:	Entrez Gene 54033 Human P57052
Background:	Tissue-specific splicing factor with potential implication in the regulation of alternative splicing during neuron and germ cell differentiation. Antagonizes SRSF1-mediated BCL-X splicing. May affect the choice of alternative 5' splice sites by binding to specific sequences in exons and antagonizing the SR protein SRSF1.
Synonyms:	RBM11

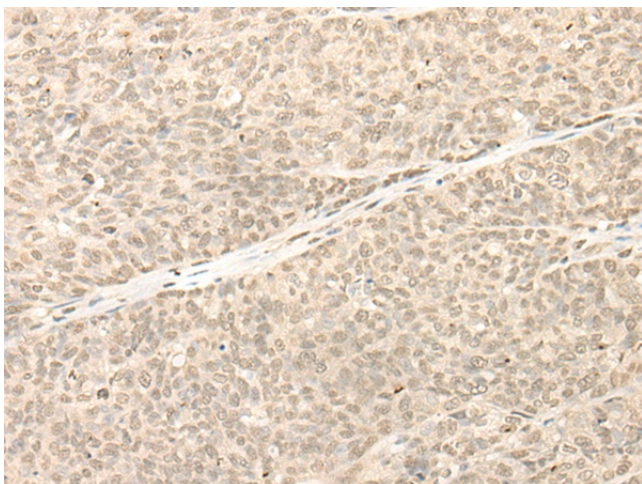


[View online »](#)

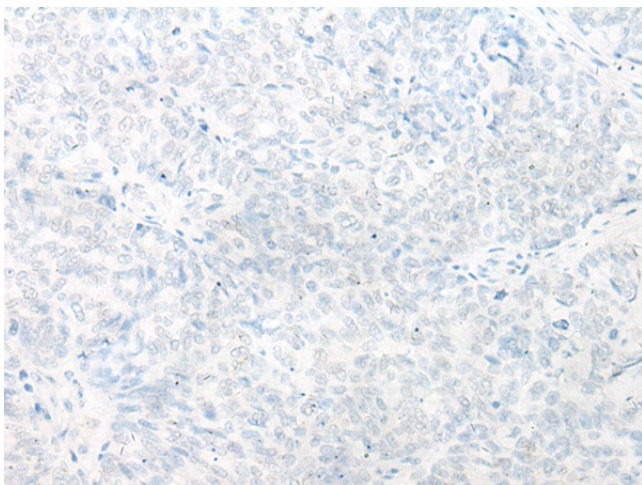
Product images:



Gel: 8%SDS-PAGE
Lysate: 40 μ g
Lane 1-3: Human kidney tissue
Human cerebella tissue and Human fetal brain
tissue lysates
Primary antibody: TA370113 (RBM11 Antibody) at
dilution 1/250
Secondary antibody: Goat anti rabbit IgG at
1/8000 dilution
Exposure time: 3 minutes



Immunohistochemistry of paraffin-embedded
Human ovarian cancer tissue using TA370113
(RBM11 Antibody) at dilution 1/20 (Original
magnification: \times 200)



Immunohistochemistry of paraffin-embedded Human ovarian cancer tissue using TA370113 (RBM11 Antibody) at dilution 1/20, treated with fusion protein. (Original magnification: $\times 200$)