

Product datasheet for **TA370111**

SH3GL2 Rabbit Polyclonal Antibody

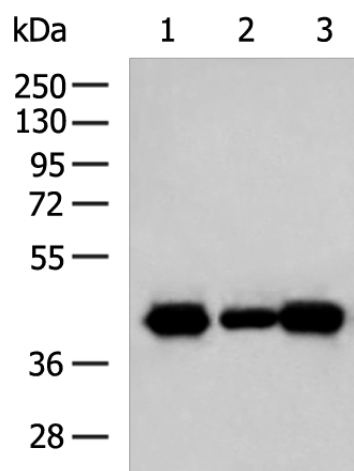
Product data:

Product Type:	Primary Antibodies
Applications:	IHC, WB
Recommended Dilution:	WB: 500-2000 WB positive control: Human cerebrum tissue, Mouse brain tissue, Human cerebella tissue lysates IHC: 50-200 Positive control: Human liver cancer Predicted cell location: Cytoplasm
Reactivity:	Human, Mouse, Rat
Host:	Rabbit
Isotype:	IgG
Clonality:	Polyclonal
Immunogen:	Fusion protein of human SH3GL2
Formulation:	pH7.4 PBS, 0.05% NaN ₃ , 40% Glycerol
Concentration:	lot specific
Purification:	Antigen affinity purification
Conjugation:	Unconjugated
Storage:	Store at -20°C.
Stability:	1 year
Predicted Protein Size:	40 kDa
Gene Name:	SH3 domain containing GRB2 like 2, endophilin A1
Database Link:	Entrez Gene 6456 Human Q99962
Background:	Implicated in synaptic vesicle endocytosis. May recruit other proteins to membranes with high curvature. Required for BDNF-dependent dendrite outgrowth. Cooperates with SH3GL2 to mediate BDNF-NTRK2 early endocytic trafficking and signaling from early endosomes.
Synonyms:	CNSA2; EEN-B1; Endophilin-1; FLJ20276; FLJ25015; SH3D2A; SH3P4

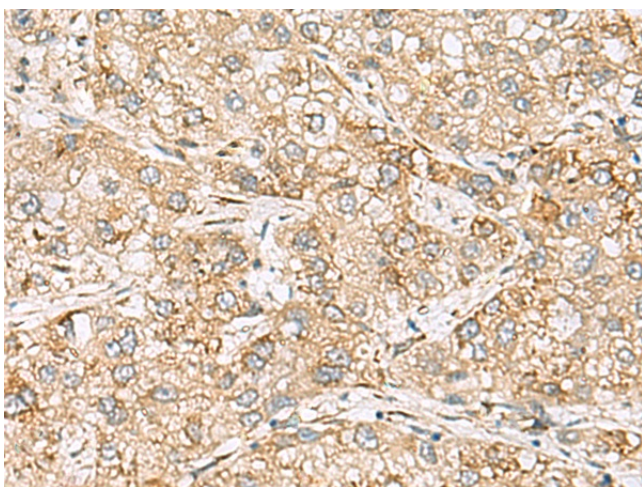


[View online »](#)

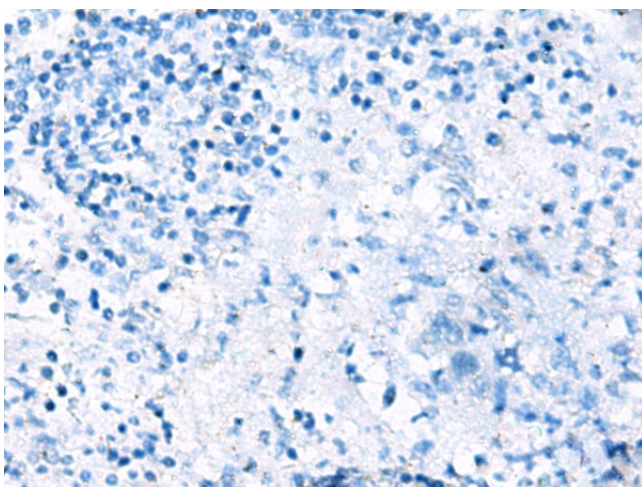
Product images:



Gel: 8%SDS-PAGE
Lysate: 40 μ g
Lane 1-3: Human cerebrum tissue
Mouse brain tissue
Human cerebella tissue lysates
Primary antibody: TA370111 (SH3GL2 Antibody)
at dilution 1/500
Secondary antibody: Goat anti rabbit IgG at
1/5000 dilution
Exposure time: 3 seconds



Immunohistochemistry of paraffin-embedded
Human liver cancer tissue using TA370111
(SH3GL2 Antibody) at dilution 1/80 (Original
magnification: $\times 200$)



Immunohistochemistry of paraffin-embedded Human liver cancer tissue using TA370111 (SH3GL2 Antibody) at dilution 1/80, treated with fusion protein. (Original magnification: ×200)